

Husky

For sliding wood and metal doors up to 100kg

Reliable and versatile single door system precision engineered for a smooth operation. Kits available with steel or aluminium track for doors up to 2700mm high and 1250mm wide. Anodised aluminium track is available in standard lengths.

Pocket Door

Cavity wall system for wood doors up to 60kg

This easy to fit system is ideal for rooms where space is at a premium such as toilets, bathrooms and kitchens. The kits are available for doors up to 2315mm high and 930mm wide. They come complete with pre-assembled aluminium track and header assembly.

Low Headroom

For sliding timber doors up to 100kg

The installation kit is designed to create a modern minimalistic finish with all parts concealed reducing the gap between the doors and the track to up to 2mm.

SIM 100

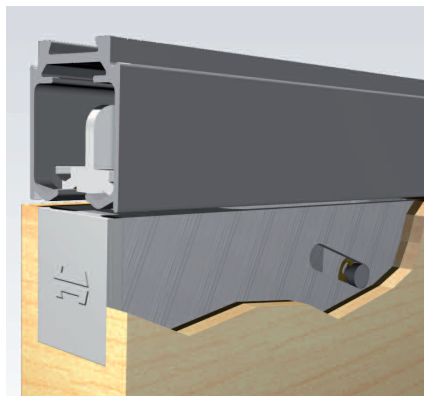
Simultaneous action kit for bi-parting timber doors

This kit which can be retro fitted allows the simultaneous operation of two doors when used in conjunction with two Husky 50, Husky 100 or Pocket door kits.

HENDERSON

www.pchenderson.com

Design in Motion



HENDERSON

Sliding Door Systems

The main advantage of using a sliding door is that it saves room space as the door does not require a swing space to open.

Using sliding doors is therefore a practical and fashionable option where space is at a premium. Sliding doors also offer a touch of individuality to a room design.

Henderson systems are designed and engineered with particular attention to aesthetic appearance, smooth and silent operation and ease of installation.

For more information call

0191 377 7345

or e-mail sales@pchenderson.com

