

STERLING 2000

HENDERSON

2000kg Wood Metal Interior Exterior

For bottom rolling wooden and metal doors weighing up to 2000kg

Overview

Sterling 2000 is ideal for heavy commercial and industrial applications such as warehouses, agricultural buildings and aircraft hangars.

Catering for wooden and metal doors weighing up to 2000kg, Sterling is a bottom rolling system suited to applications where the supporting structure or lintel is insufficient for the weight of the door. The product is suitable for single or multiple lines of track and the top guide channel may be soffit fixed or face fixed.

Features and Benefits

- Can cover any opening width
- Doors can slide on single or multiple lines of track
- For heavy weight industrial applications
- Top guide channel may be soffit fixed or face fixed



Product and Door Specification

Product	Door Material	Door Thickness Range		Max. Door Weight
		Metal Doors	Wood Door	
Sterling 2000	Wood or Metal	58 - 70mm	70 - 100mm	2000kg

Component Specification

Component	Description	Short Code
Top Guide Channel	Galvanised steel channel available in 2000, 2500 and 3000mm lengths	13/****
Brackets (Fix every 900mm max)	Face fixed adjustable	1/13
	Soffit fixed - jointing	2/13
	Face fixed - jointing - double	5/13
Top Guide Rollers (2 per door)	Metal door - 20000mm max height	104/13
	Wooden door - saddle fixing	53/13
Bottom Rollers (2 per door, zinc plated and maintenance free, sealed for life roller bearing)	Metal door for standard rail (wheel and bolt only)	4SJU
	Metal door for V tread rail (wheel and bolt only)	4SJV
	Metal door for square tread rail (wheel and bolt only)	4SJL
	Metal door - standard roller	4SJ
	Wooden door	4J
Bottom Rail	Galvanised steel available in 2000, 2500, 3000 and 4000mm lengths	298/****
Stop	Wall mounted stops with double rubber buffer	107

**** Replace by length of track for full short code

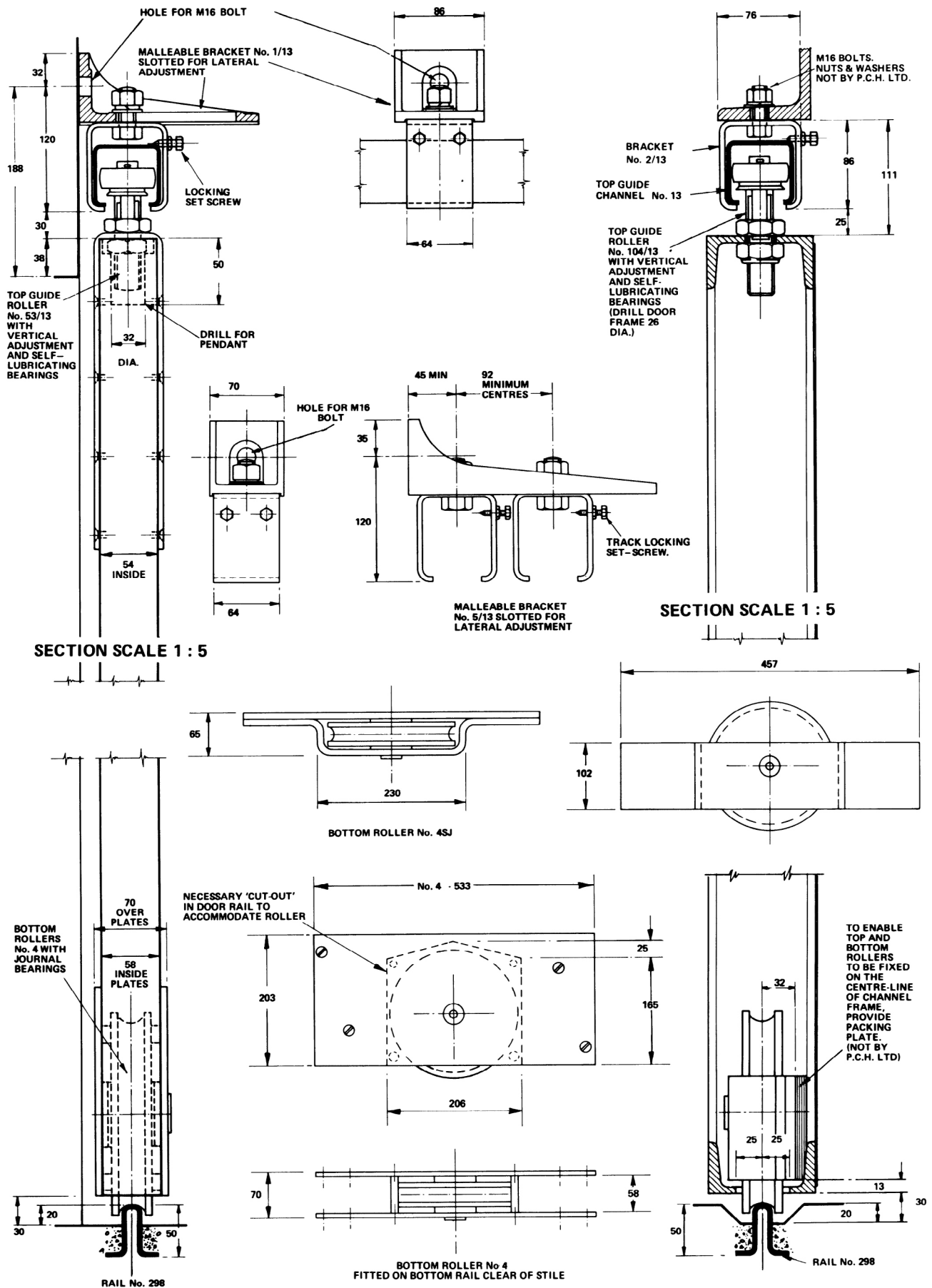
If this product is to be installed in areas exposed to extreme heat - we recommend a maximum temperature of 70°C.

Metal Doors



Wood Doors





For further information, please contact us on:

UK Sales

T: +44 (0) 191 377 7345

E: sales@pchenderson.com

W: www.pchenderson.com

Export Sales

T: +44 (0) 191 377 7346

E: international@pchenderson.com

W: export.pchenderson.com