

STERLING 800

HENDERSON

800kg

Wood

Metal

Interior

Exterior

For bottom rolling wooden and metal doors weighing up to 800kg

Overview

Catering for metal and wooden doors up to 800kg, Sterling 800 is ideal for heavy commercial and industrial applications such as warehouses, agricultural buildings and aircraft hangars. The system is suitable for bottom rolling applications where the supporting structure or lintel is insufficient for the weight of the door. To cover any width of opening, the system can be used with single or multiple lines of track and can be soffit or face fixed.

Features and Benefits

- Can cover any opening width
- Doors can slide on single or multiple lines of track
- For heavy weight industrial applications
- Top guide channel may be soffit fixed or face fixed



Product and Door Specification			
Product	Door Material	Door Thickness Range	Max. Door Weight
Sterling 800	Wood or Metal	54 - 63mm	800kg

Component Specification		
Component	Description	Short Code
Top Guide Channel	Galvanised steel channel available in 2000, 2500 and 3000mm lengths	99/****
Brackets (Fix every 900mm max)	Face fixed	31
	Face fixed - double - jointing	35X
	Face fixed - double	35
Top Guide Rollers (2 per door)	Metal door - 12500mm max height	104/99
	Wooden door - saddle fixing	53/99
Bottom Rollers (2 per door, zinc plated and maintenance free, sealed for life roller bearing)	Metal door for standard rail (wheel and bolt only)	3SU
	Metal door for V tread ril (wheel and bolt only)	3SV
	Metal door for square tread rail (wheel and bolt only)	3SL
	Metal door - standard roller	3S
	Wooden door	3
Bottom Rail	Galvanised steel available in 2000, 2500, 3000 and 4000mm lengths	298/****
Stop	Wall mounted stops with double rubber buffer	107

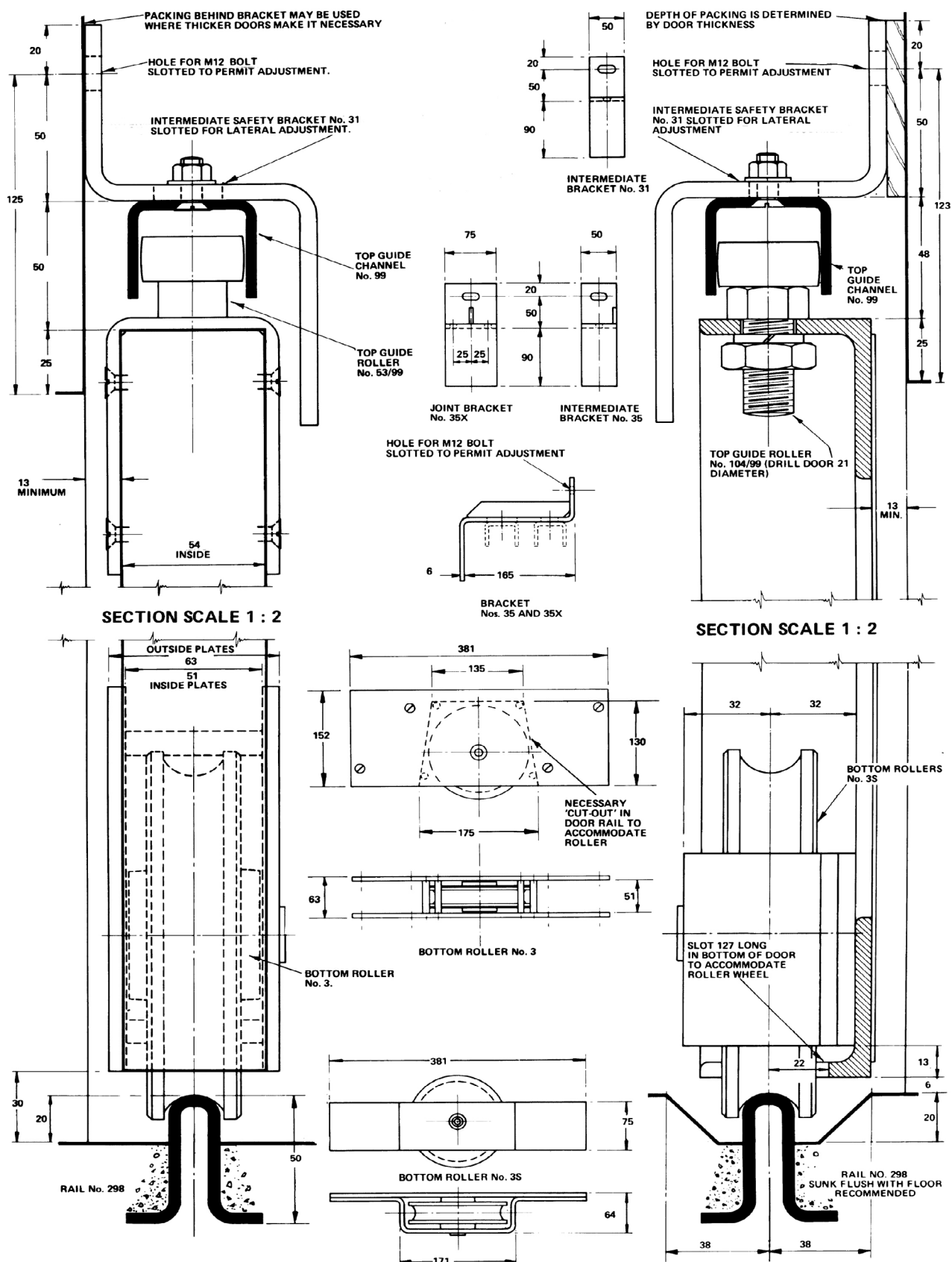
\*\*\*\* Replace by length of track for full short code  
If this product is to be installed in areas exposed to extreme heat - we recommend a maximum temperature of 70°C.

Metal Doors



Wooden Doors





For further information, please contact us on:

#### UK Sales

T: +44 (0) 191 377 7345

E: [sales@pchenderson.com](mailto:sales@pchenderson.com)

W: [www.pchenderson.com](http://www.pchenderson.com)

#### Export Sales

T: +44 (0) 191 377 7346

E: [international@pchenderson.com](mailto:international@pchenderson.com)

W: [export.pchenderson.com](http://export.pchenderson.com)