

# STERLING 8000

HENDERSON

8000kg Wood Metal Interior Exterior

For bottom rolling wooden and metal doors weighing up to 8000kg

## Overview

Catering for wooden and metal doors weighing up to 8000kg, the Sterling range of bottom rolling systems is ideal for heavy commercial and industrial applications such as warehouses, agricultural buildings and aircraft hangars. The product is particularly suitable where the supporting structure or lintel is insufficient for the weight of the door or headroom is limited. The system is also suitable for single or multiple lines of track and the top guide channel may be soffit fixed or face fixed.

## Features and Benefits

- Can cover any opening width
- Doors can slide on single or multiple lines of track
- For heavy weight industrial applications
- Top guide channel may be soffit fixed or face fixed



## Product and Door Specification

Product	Door Material	Min. Door Thickness	Max. Door Weight
Sterling 8000	Metal	152mm	8000kg

## Component Specification

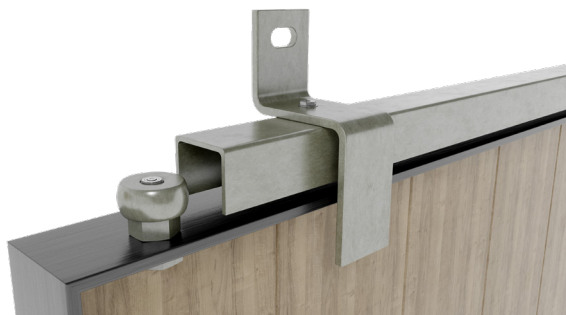
Component	Description	Short Code
Top Guide Channel	Not by P C Henderson	
Brackets	Not by P C Henderson	
Top Guide Rollers (4 per door)	Metal door - 7000mm max height	104S/125
	Metal door - 12500mm max height	104S/175
	Metal door - 20000mm max height	104S/200
Bottom Rollers (2 per door, zinc plated and maintenance free. Sealed for life roller bearing)	Metal door - standard roller	8000IR*
	Metal door - geared	8000OR*
Bottom Rail	Heavy steel section in 2700mm lengths	297/2700
Stop	Wall mounted stops with double rubber buffer	107

\*\*\*\* Replace by length of track for full short code

\*These components require additional parts based on individual project requirements Please contact P C Henderson with specification details.

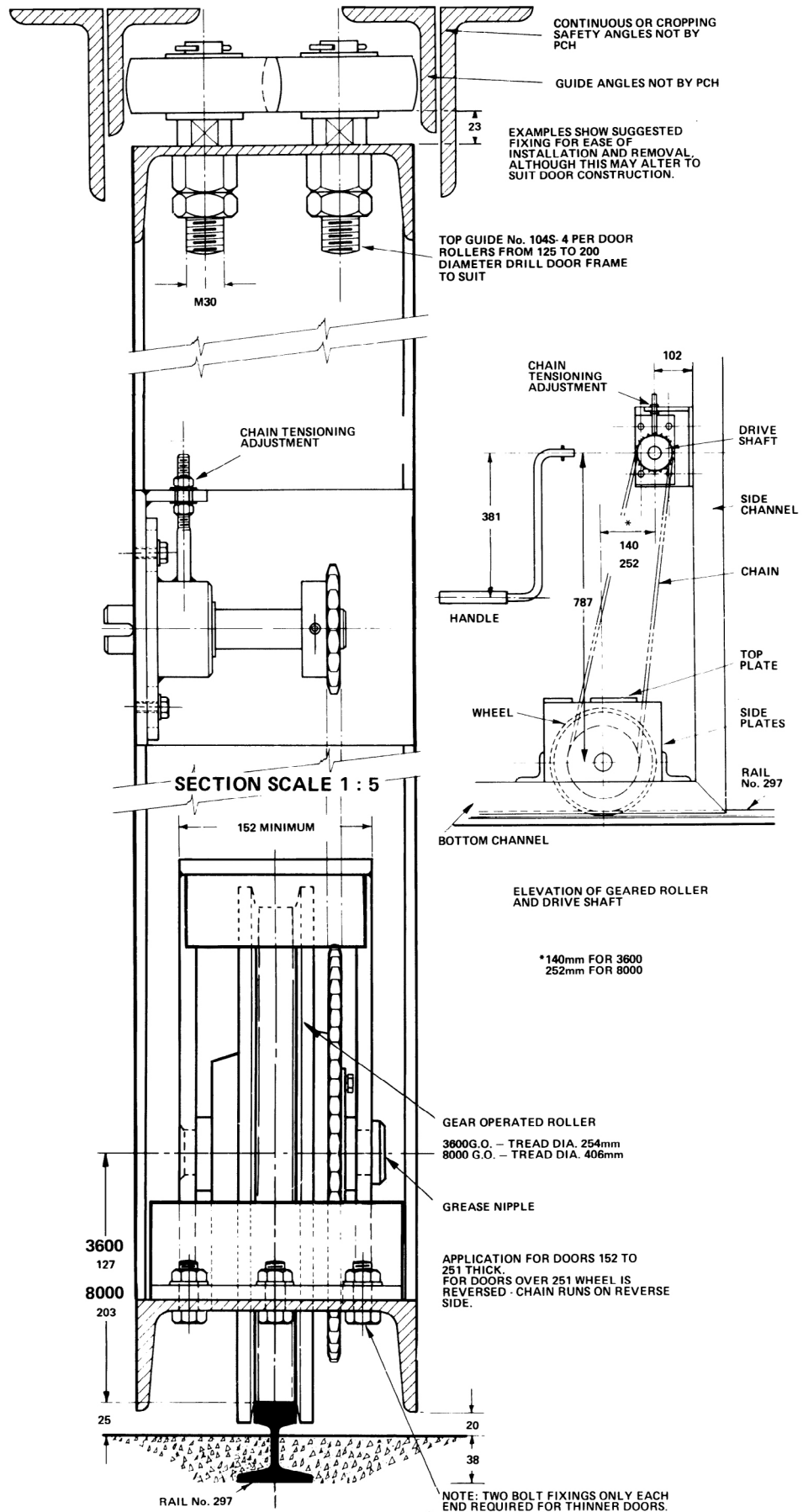
If this product is to be installed in areas exposed to extreme heat - we recommend a maximum temperature of 70°C.

## Metal Doors



## Wooden Doors





For further information, please contact us on:

#### UK Sales

T: +44 (0) 191 377 7345

E: [sales@pchenderson.com](mailto:sales@pchenderson.com)

W: [www.pchenderson.com](http://www.pchenderson.com)

#### Export Sales

T: +44 (0) 191 377 7346

E: [international@pchenderson.com](mailto:international@pchenderson.com)

W: [export.pchenderson.com](http://export.pchenderson.com)