

# Tangent Round the Corner

Round the corner system perfect for garage door applications for doors weighing up to 70kg



Suitable for garage door applications, Tangent Round the Corner is a robust top hung system which allows a number of doors to slide around a corner and is ideal in applications whereby a stack of parked doors would be impractical.

The system caters for wooden and metal doors weighing up to 70kg. Only 3 to 5 panels should be hinged in 1 unit, but any number of units may be used to suit panels between 711mm and 900mm wide.



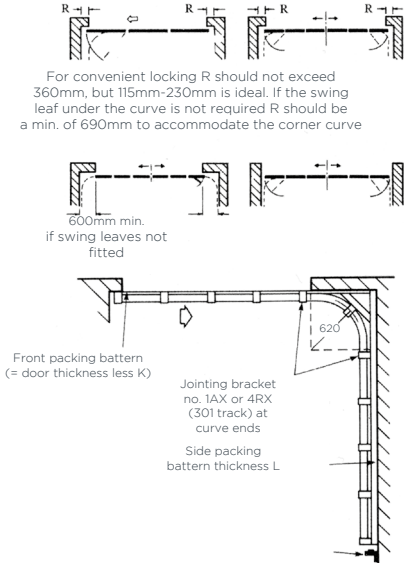
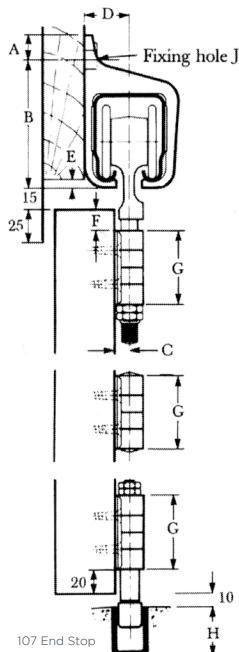
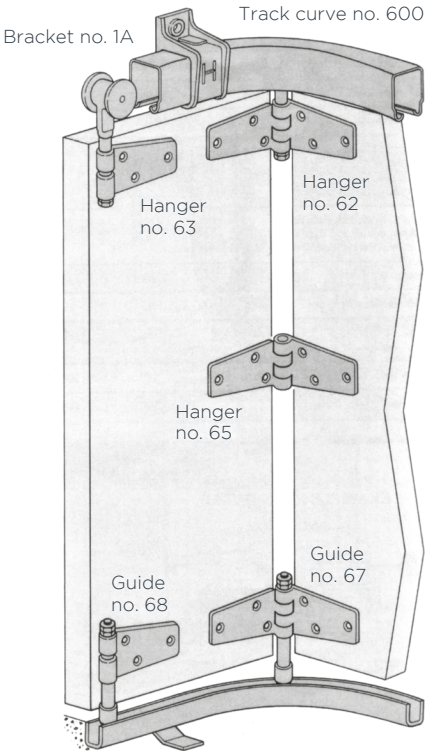
## Product Information

Product	Door Width Range	Door Thickness Range	Max. Door Weight
Tangent RTC 290	711 - 900mm	35 - 50mm	35kg
Tangent RTC 301	711 - 900mm	45 - 55mm	55kg
Tangent RTC 301H	711 - 900mm	45 - 55mm	70kg

## Product Specification

Component	Description	290	301	301H
Track	Steel track - 2000, 2500, 3000, 4000, 5000 & 6000mm	290/****	301/****	301H/****
Track Curves	For single (x1) or bi-parting doors (x2)	600K	600B	600BH
Brackets Fix every 900mm max. and at track joints and curves. Fix jointing brackets /sleeve at both curved ends	Face fixed brackets, single	1A/290	1A/301	1A/301
	Face fixed brackets, single jointing	1AX/290	1AX/301	1AX/301
	End clip for bracket	1A/290EC	1A/301EC	1X/301EC
Hangers 1 per door joint and end door	Intermediate hanger	62K	62A	62A
	End hanger	63K	63A	63A
Hinges	Backflap hinge	65	65	65
Guides 1 per door joint and end door	Intermediate guide	67/89	67/97	67/97
	End guide	68/89	68/97	68/97
Channel	Galvanised steel channel - 2000, 2500, 3000, 4000 and 6000mm. 89 not available in 6000mm	89/****	97/****	97/****
Channel Curve	Galvanised steel channel curve	601/89	601/97	601/97
Stops	Stop with single rubber buffer	109	109	109
	Stop with double rubber buffer	107	107	107
Track Stop	Track stop	HH3/290	HH3/301	HH3/301
Bolts	Shoot bolt	994		
	Offset shoot bolt	994X		
	Shoot bolt for use with 89 channel and 97 channel	994/89	994/97	994/97

\*\*\*\* Replace with length of track for full product code



Dimensions											
Track	A	B	C	D	E	F	G	H	J	K	L
290	13	67	11	27	6	10	57	25	M8	6	65
301/301H	20	97	11	35	6	15	57	25	M12	16	70

Wood Doors



Metal Doors

