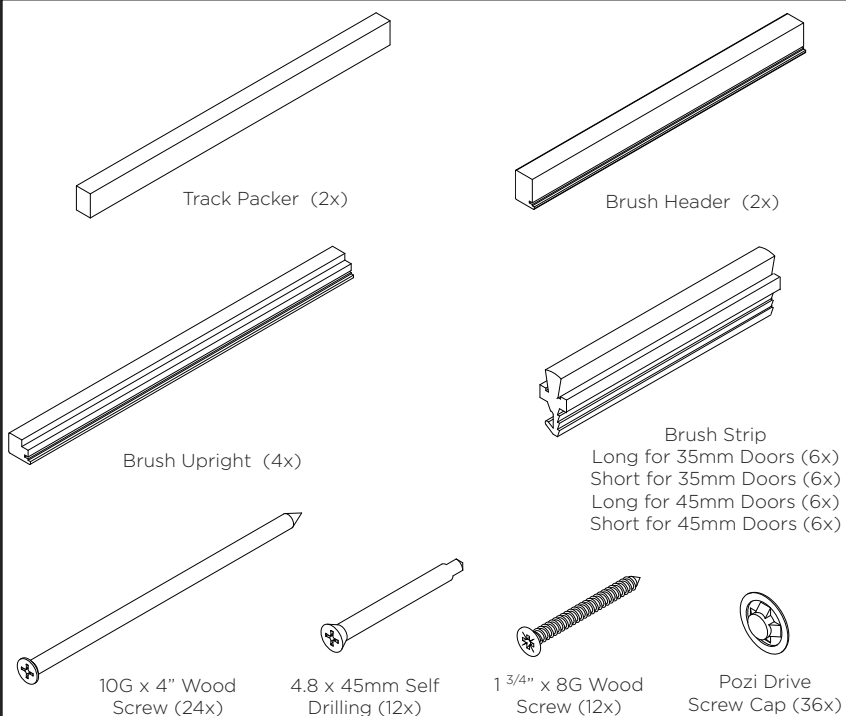


# POCKET DOOR PRO BI-PARTING LINER KIT

# HENDERSON

## FITTING INSTRUCTIONS

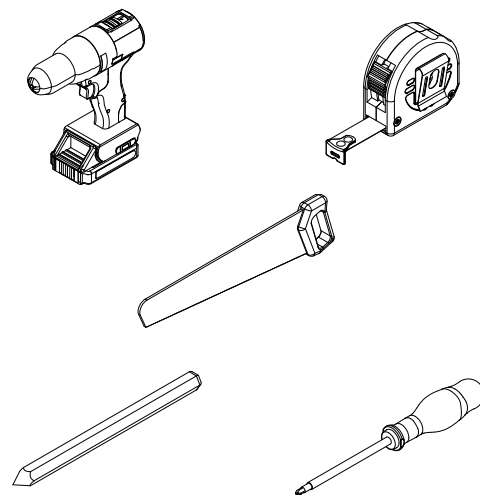
### KIT CONTENTS



### KIT AND DOOR SPECIFICATION

Kit Short Code	Max. Door Thickness	Wall Thickness
BILKH/120	45mm	120mm
BILKH/125	45mm	125mm

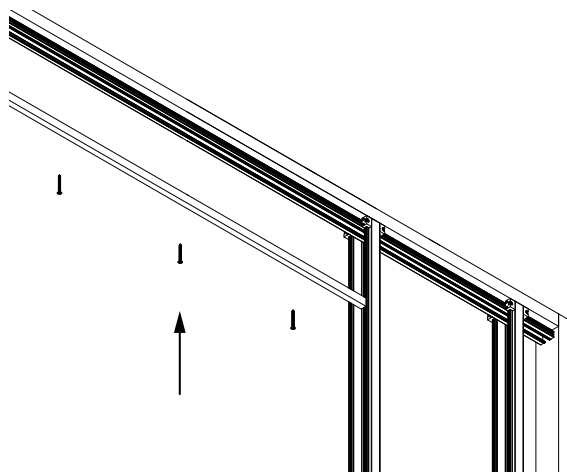
### TOOLS REQUIRED



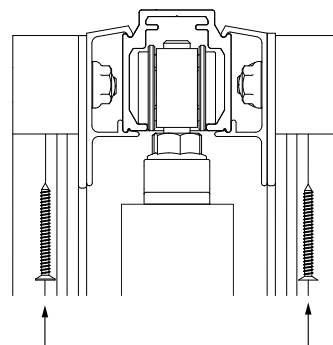
#### 1 ADD BRUSH STRIPS TO LINER KIT.



#### 2 CUT TRACK PACKER TO SUIT OPENING. SECURE WITH 1 3/4" X 8G SCREW.



#### Side View

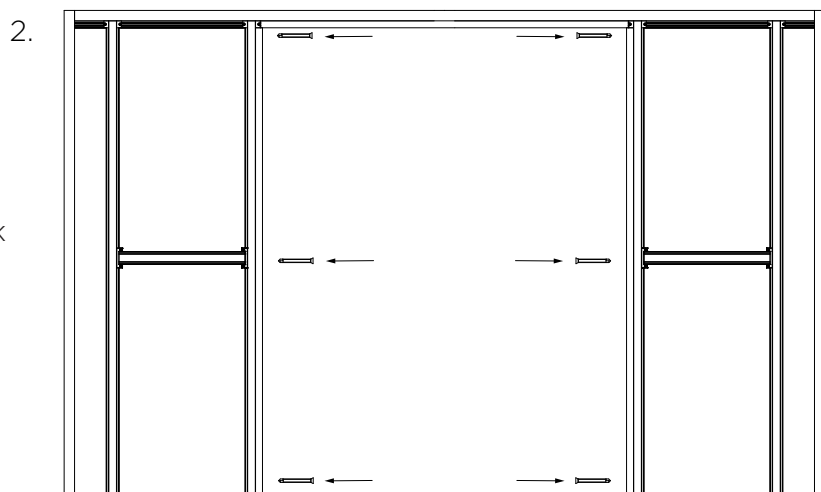
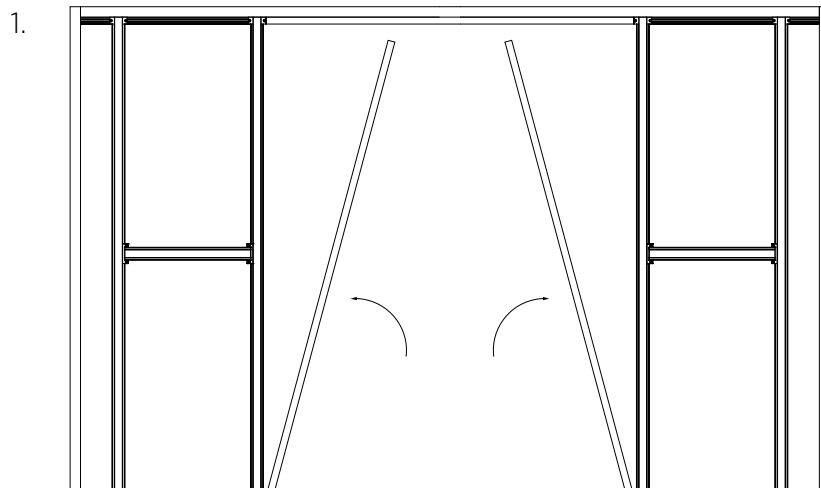


#### Track Packer Reduction Calculation

$$\text{Reduction} = \text{Door Width (DW} \times 2) - 25\text{mm}$$

3

CUT DOWN BRUSH UPRIGHT TO SUIT OPENING. SECURE WITH 4.8 X 45MM SCREW.

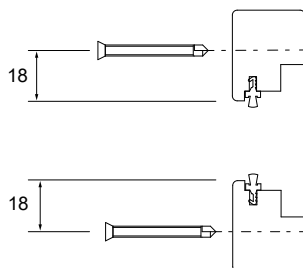


**Note:** Pilot drill and countersink if required

#### Brush Upright Reduction Calculation

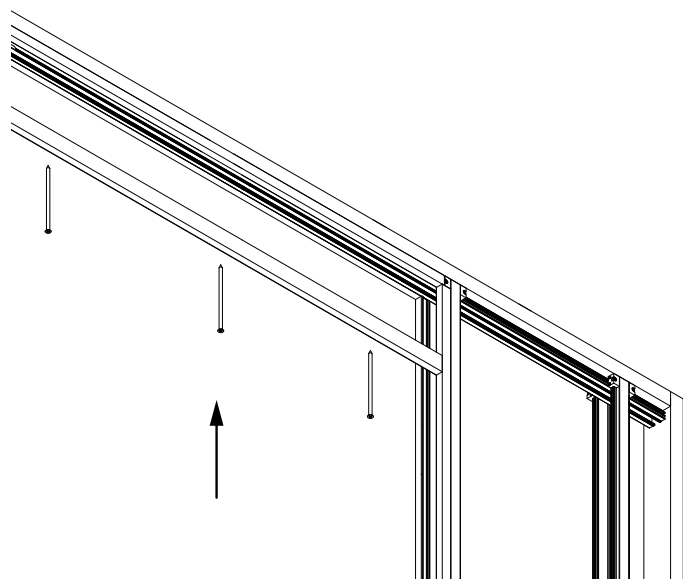
Reduction = Opening Height (OW) - 30mm

#### Screw Positions

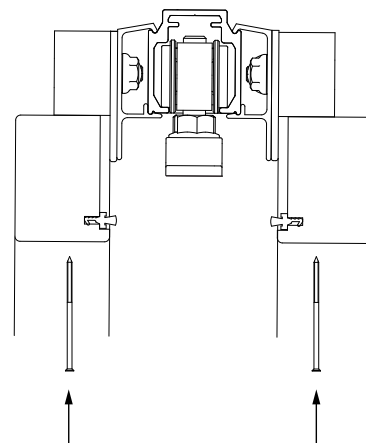


4

CUT HEADER TO LENGTH. SECURE WITH 10G X 4" SCREW.

**Header Timber Reduction Calculation**

Reduction = Door Width (DW) - 50mm

**Side View****Note:** Pilot drill and countersink if required**FINISHING TOUCHES**

1. Complete installation by adding provided screw caps to exposed screw heads.
2. Ensure plasterboard is butted up tight against the outside of all the liner kit.

**P C HENDERSON LTD**  
Durham Road, Bowburn,  
Co. Durham,  
DH6 5NG

**UK SALES**  
+44 (0) 191 377 7345  
sales@pchenderson.com  
www.pchenderson.com

**IRELAND SALES**  
+353 (0)1 643 6816  
sales@pchenderson.ie  
www.pchenderson.com

**INTERNATIONAL SALES**  
+44 (0) 191 377 7346  
international@pchenderson.com  
export.pchenderson.com

370857  
REV 1  
Feb 23