

Roomflex 40

Professional internal folding door solution ideal for room dividing doors weighing up to 40kg



Roomflex 40 is an internal folding door solution ideal for creating flexible living environments. When open, the doors stack to one or both sides of the opening to create spaces which are great for entertaining. When closed, the smaller rooms can be used for independent activities.

Designed for wooden doors weighing up to 40kg each, Roomflex 40 offers a professional system for joiners and installers. Utilising Husky 120 Pro components, the system has been designed with robust hardware for increased longevity. The system has also been designed without a bottom channel, allowing for a seamless walkway between rooms. Please note: the track must be specified in addition to the kit.



Product Specification

Product Code	Door Configuration	Max. Door Height	Max. Door Width	Door Thickness Range	Max. Door Weight
HRP2/0	2+0	3000mm	838mm	35 - 44mm	40kg
HRP2/1	2+1	3000mm	838mm	35 - 44mm	40kg
HRP3/0	3+0	3000mm	838mm	35 - 44mm	40kg
HRP3/1	3+1	3000mm	838mm	35 - 44mm	40kg
HRP2/2	2+2	3000mm	838mm	35 - 44mm	40kg
HRP4/0	4+0	3000mm	838mm	35 - 44mm	40kg
HRP3/2	3+2	3000mm	838mm	35 - 44mm	40kg
HRP3/3	3+3	3000mm	838mm	35 - 44mm	40kg

Track Specification - Must be purchased in addition to kit

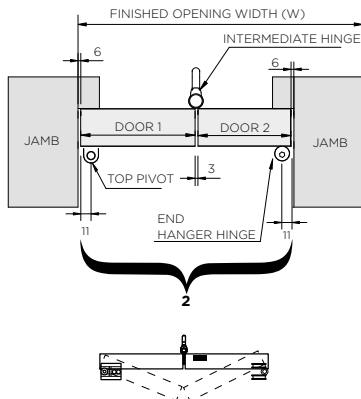
Product Code	Description
280HP/**AN	Anodised aluminium track - 1500, 1800, 2000, 2500, 3000 and 4000mm

**Replace by length of track for full product code (For example, 1500mm = 15, 1800mm = 18)

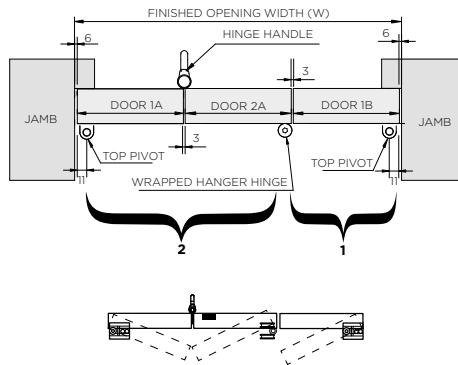
Kit Contents

Component	Quantity (Door Configuration)							
	2+0	2+1	3+0	3+1	2+2	4+0	3+2	3+3
Pivot Set	1	2	1	2	2	1	2	2
Intermediate Hinge Handle Set	1	1	-	-	2	-	1	-
Offset Hinge Handle Set	-	-	1	1	-	1	1	1
Intermediate Hinge Hanger Set	-	-	1	1	-	1	1	1
End Hanger	1	-	-	-	2	1	1	-
Wrapped Hanger	-	1	-	-	-	-	-	-
Flush Bolts	1	1	1	2	2	2	2	3

2+0



2+1



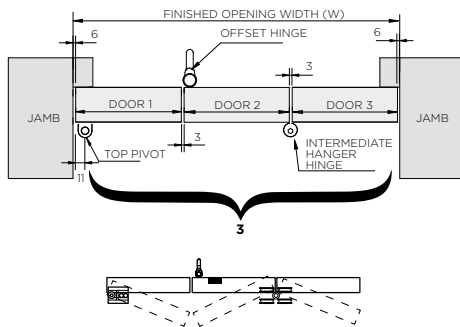
Opening Size Formula

Door Configuration	Opening Width	Opening Height
2+0	$(DW \times 2) + 15$	DH + 52
2+1	$(DW \times 3) + 18$	
3+0	$(DW \times 3) + 18$	
3+1	$(DW \times 4) + 21$	
2+2	$(DW \times 4) + 21$	
4+0	$(DW \times 4) + 21$	
3+2	$(DW \times 5) + 24$	
3+3	$(DW \times 6) + 27$	

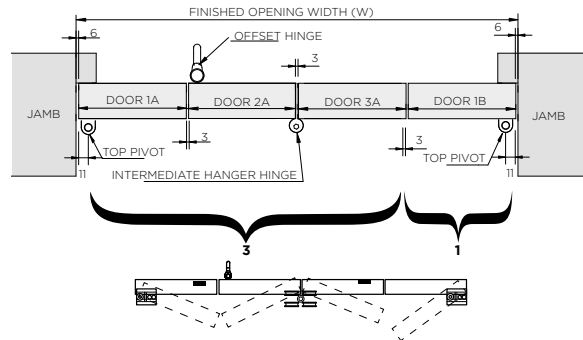
Key

DW	Door Width
DH	Door Height

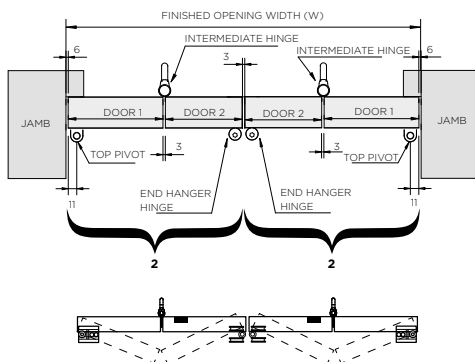
3+0



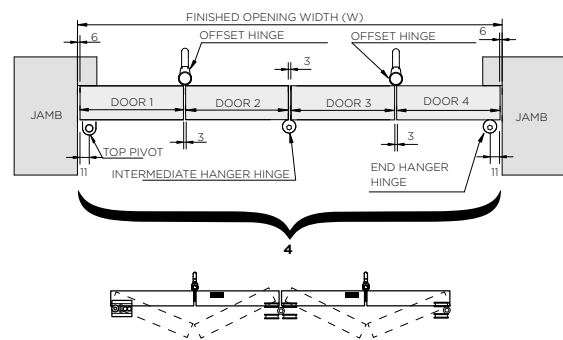
3+1



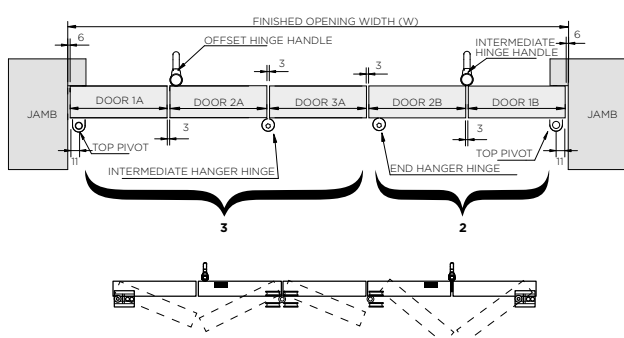
2+2



4+0



3+2



3+3

