

## MARATHON FIRE DOOR KIT - FDK I

### STANDARD KIT SIZES

The MARATHON Fire Door Kits FDK I are produced in one standard size for use with doors weighing up to 90kg max. They must be used with a MARATHON Kit 'S3' for doors 750 - 900mm wide; set 'S4' for doors 900 - 1050mm wide; set 'S5' for doors 1050mm - 1200mm wide or set 'S6' for doors 1200mm - 1500mm wide. (S3/S4/S5/S6 are not included in the Fire Door Kit).

### OPERATION

The easily operated sliding door is returned automatically to the closed position after each operation, by the smooth operation of the counterbalance weights when using an FDK I kit.

### INTUMESCENT SEAL

It is required that intumescent fire seals be incorporated into the door opening framework, to contain the fire within the fire area. (Do not use smoke seals as this will hinder the self closing action - seals are not supplied by PC Henderson Limited).

### FIRE RATING

The Marathon Fire Door Kit is a system developed as part of a half hour sliding fire door assembly, to BS 476: Part 22: 1987 and should be installed on the non-fire risk side of an aperture.

The assembly must be fitted with a solid core FD30 or FD60 timber based fire door, positively appraised by Warrington Fire or CERTIFIRE approved. Assessment report WFRC No.C116602 confirms that a sliding fire door assembly, fitted in accordance with these instructions, will offer 30 minutes of fire protection in accordance with BS 476: Part 22: 1987, (ref: report Warres No. 40991).

For further assistance please contact the Technical Sales Team at [technical@pchenderson.com](mailto:technical@pchenderson.com)

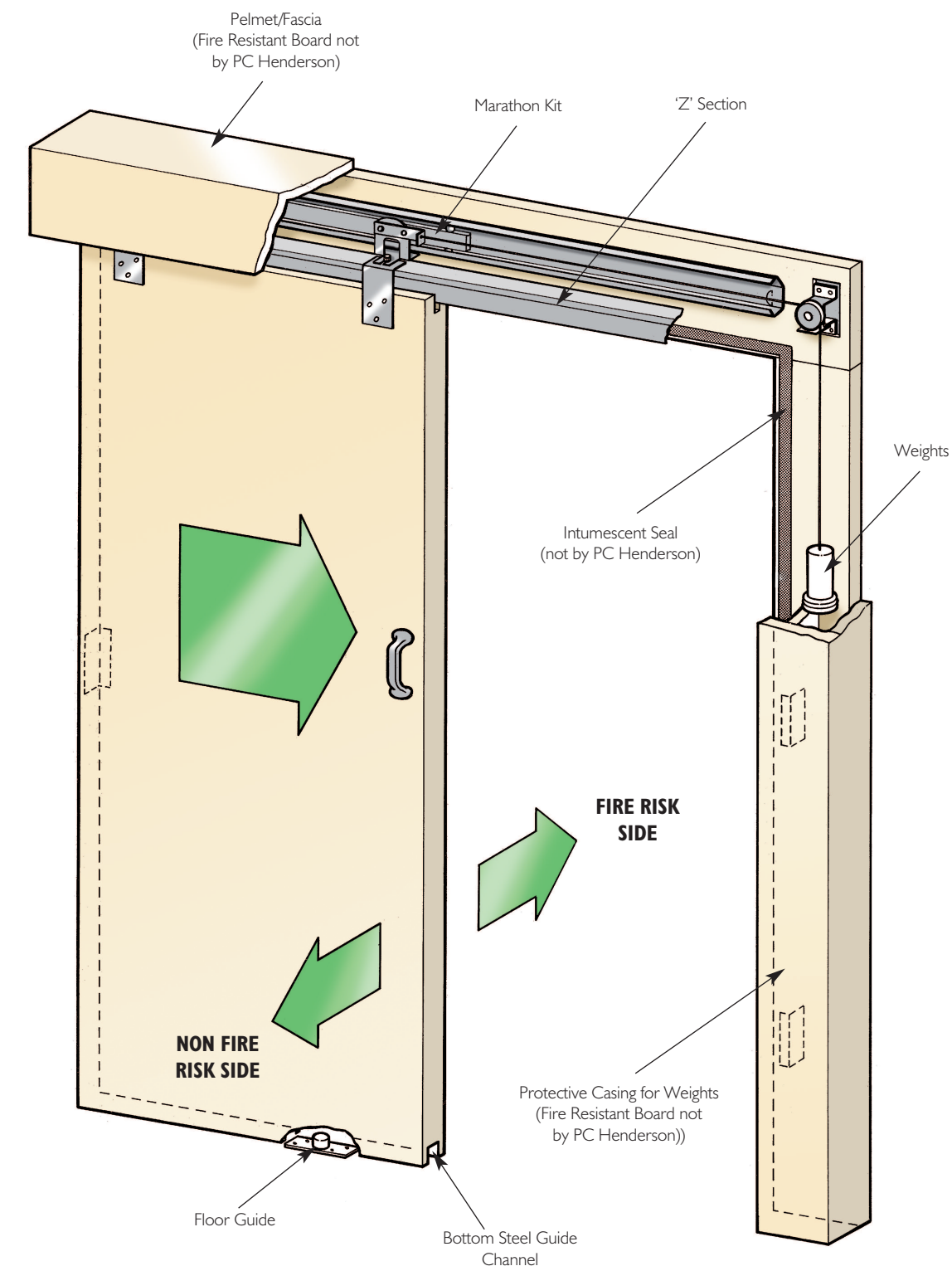
**HENDERSON**

P C Henderson Limited, Durham Road, Bowburn, County Durham DH6 5NG, UK. Web: [www.pchenderson.com](http://www.pchenderson.com)  
UK Customer Services Department: Tel: +44 (0)191 377 7345 Fax: +44 (0)191 377 3116 Email: [sales@pchenderson.com](mailto:sales@pchenderson.com)  
Export Department: Tel: +44 (0)191 377 7346 Fax: +44 (0)191 377 0755. Email: [international@pchenderson.com](mailto:international@pchenderson.com).  
For all technical queries email our Technical Department: [technical@pchenderson.com](mailto:technical@pchenderson.com)

## MARATHON FIRE DOOR KIT - FDK I

FOR FIRE DOORS UP TO 90kg

Designed for use solely in conjunction with the PC Henderson Marathon S3,S4,S5 or S6 gear sets  
For full installation instructions, please refer to Marathon Fire fitting instructions.



### WARNING:

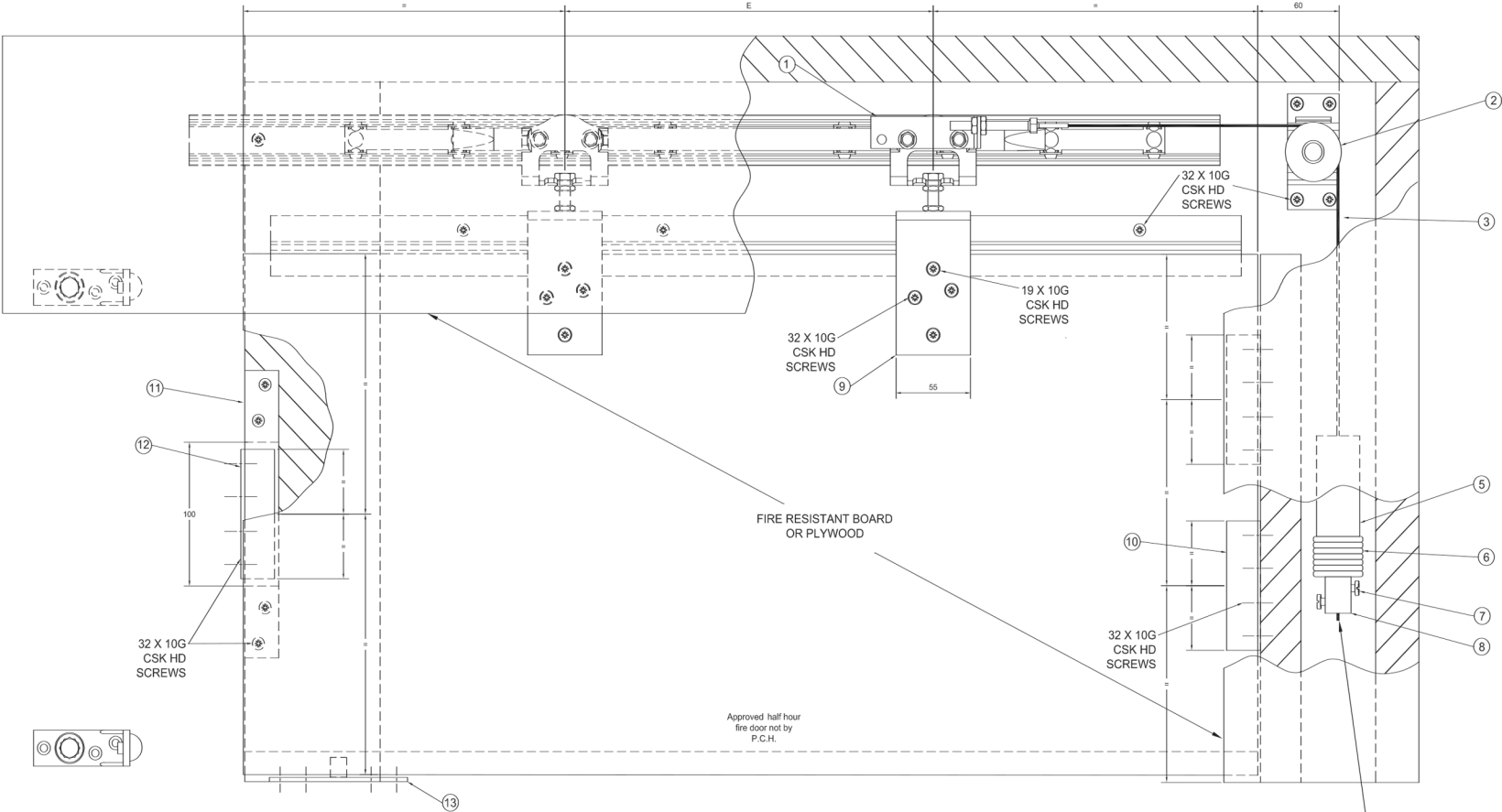
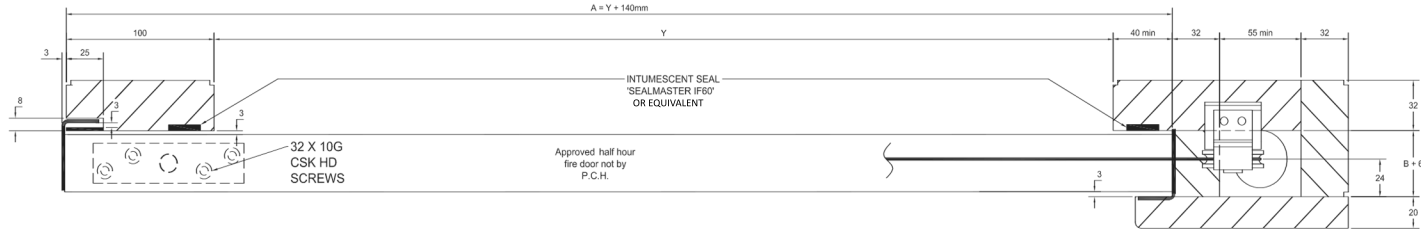
Doors must be free to close at all times. Do not retain in an open position. Be aware of the area the door moves through during its operation cycle. Keep people and objects out of the way at all times.

Part No:992453  
February 2020  
LVL 07

# MARATHON FIRE DOOR KIT - FDK I Typical Assembly

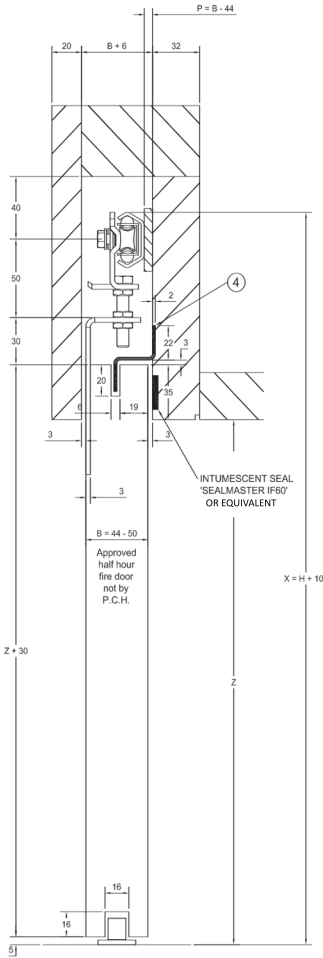
	Door Width, A	Door Thickness, B	Hanger Centres, E	Max. Weight
S3	750 - 900	44 - 50	368	90kg
S4	900 - 1050	44 - 50	445	90kg
S5	1050 - 1200	44 - 50	546	90kg
S6	1200 - 1500	44 - 50	724	90kg

Plan



Side Elevation

ITEM No.	DESCRIPTION	QTY
1	Cable anchor plate	1
2	Pulley assembly	1
3	Adjustment stem & cable sub assembly	1
4	'Z' Section	1
5	Main weights	5
6	Make weights	8
7	M5 x 12 Cheese head set screw	2
8	Clamp cleat	1
9	Apron assembly	2
10	Door binder 'front edge'	2
11	Binder 'receiving plate'	1
12	Door binder 'back edge'	1
13	Guide 106/93	1



End Elevation