

# MARATHON FIRE DOOR KIT - FDK 2

## STANDARD KIT SIZES

The MARATHON Fire Door Kit FDK 2 (for non self closing use only) are produced in one standard size for use with doors weighing up to 90kg max. They must be used with a MARATHON Kit 'S3' for doors 750 - 900mm wide; set 'S4' for doors 900 - 1050mm wide; set 'S5' for doors 1050mm - 1200mm wide or set 'S6' for doors 1200mm - 1500mm wide. (S3/S4/S5/S6 are not included in the Fire Door Kit).

## INTUMESCENT SEAL

It is required that intumescent fire seals be incorporated into the door opening framework, to contain the fire within the fire area. (Do not use smoke seals as this will hinder the self closing action - seals are not supplied by PC Henderson Limited).

## FIRE RATING

The Marathon Fire Door Kit is a system developed as part of a half hour sliding fire door assembly, to BS 476: Part 22: 1987 and should be installed on the non-fire risk side of an aperture.

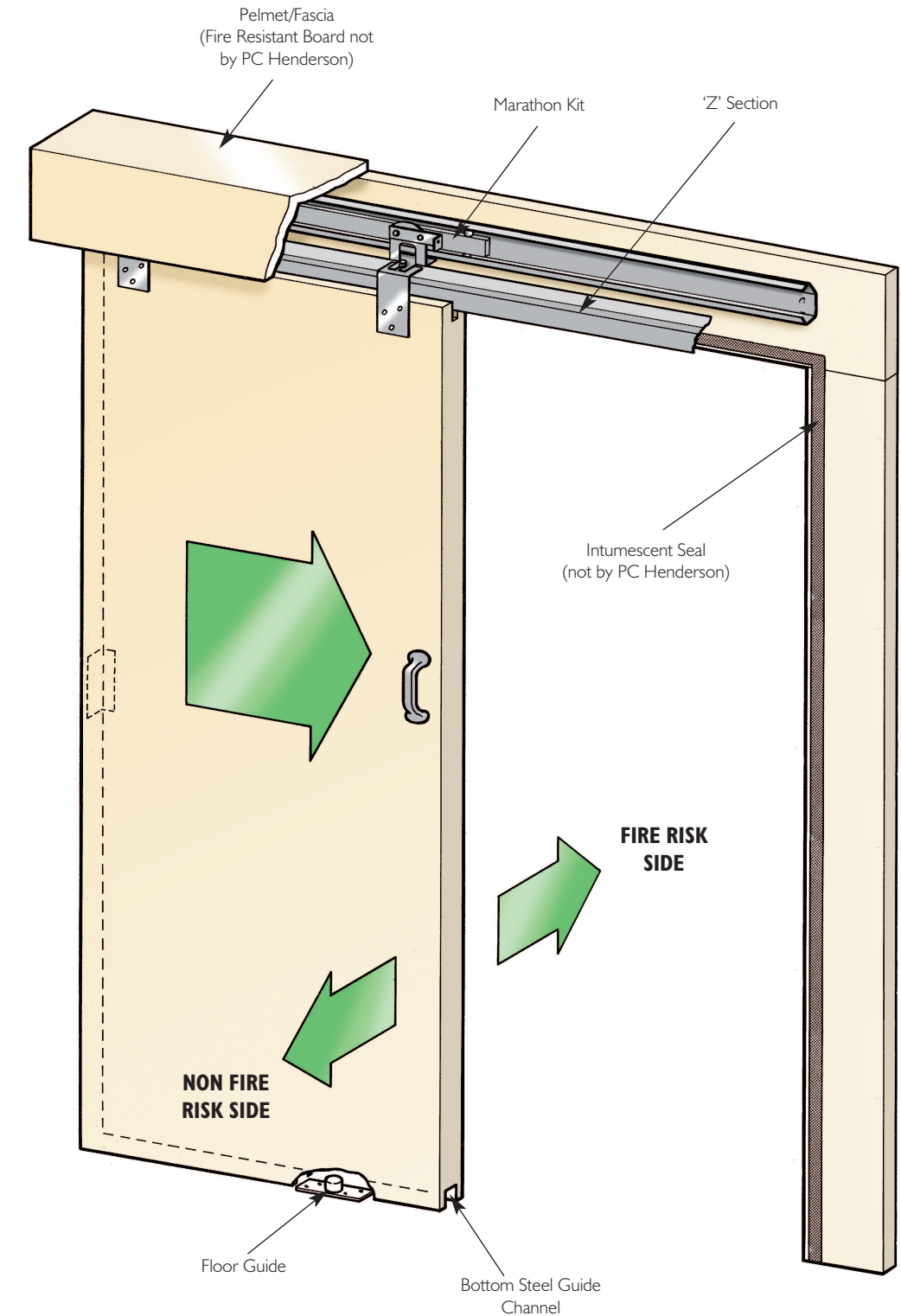
The assembly must be fitted with a solid core FD30 or FD60 timber based fire door, positively appraised by Warrington Fire or CERTIFIRE approved. Assessment report WFRC No.C116602 confirms that a sliding fire door assembly, fitted in accordance with these instructions, will offer 30 minutes of fire protection in accordance with BS 476: Part 22: 1987, (ref: report Warres No. 40991).

For further assistance please contact the Technical Sales Team at [technical@pchenderson.com](mailto:technical@pchenderson.com)

# MARATHON FIRE DOOR KIT - FDK 2

## FOR FIRE DOORS UP TO 90kg

Designed for use solely in conjunction with the PC Henderson Marathon S3,S4,S5 or S6 gear sets



## WARNING:

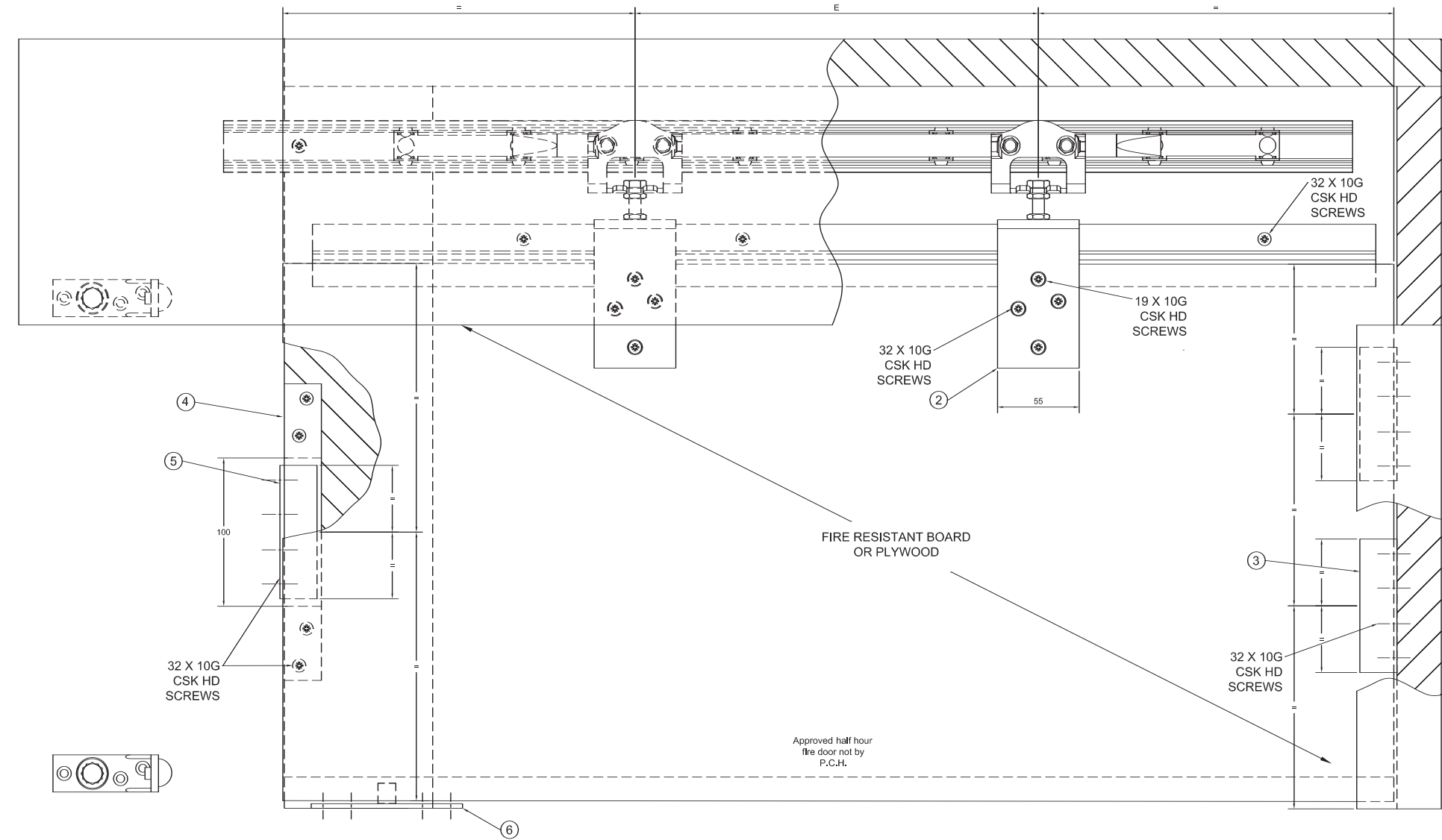
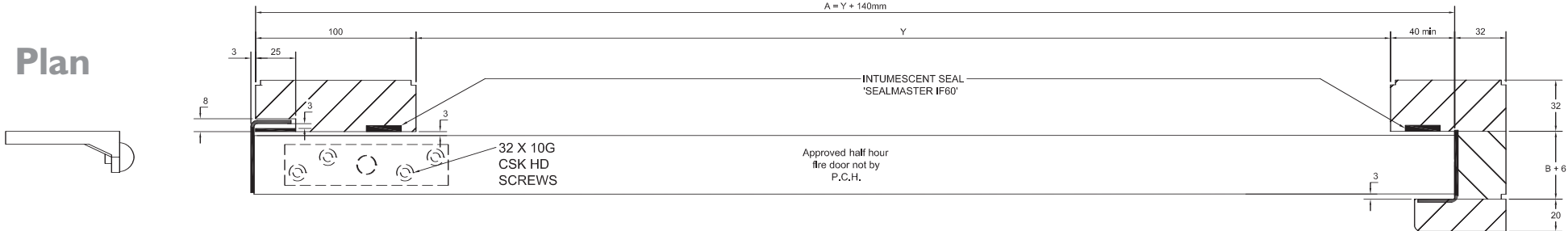
Do not retain in an open position. Be aware of the area the door moves through during its operation cycle. Keep people and objects out of the way at all times.

Part No:300810 - January 2012

# MARATHON FIRE DOOR KIT - FDK 2 Typical Assembly

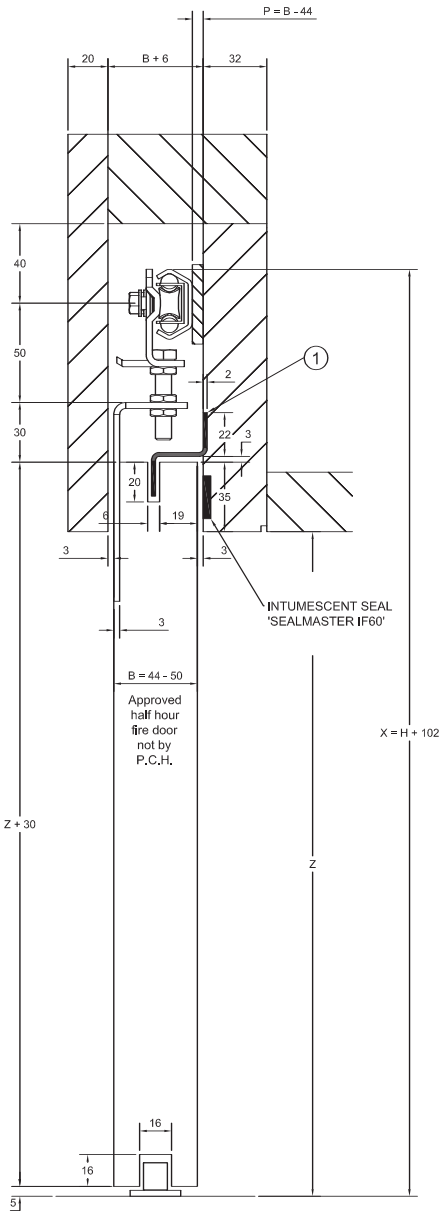
	Door Width, A	Door Thickness, B	Hanger Centres, E	Max. Weight
S3	750 - 900	44 - 50	368	90kg
S4	900 - 1050	44 - 50	445	90kg
S5	1050 - 1200	44 - 50	546	90kg
S6	1200 - 1500	44 - 50	724	90kg

Plan



Side Elevation

ITEM No.	DESCRIPTION	QTY
1	'Z' Section	1
2	Apron assembly	2
3	Door binder 'front edge'	2
4	Binder 'receiving plate'	1
5	Door binder 'back edge'	1
6	Guide 106/93	1



End Elevation