

OVERHEAD RUNWAY HENDERSON

Interior Exterior Various Weights

Selection of track, curves and brackets which can be used to create a variety of overhead runway systems

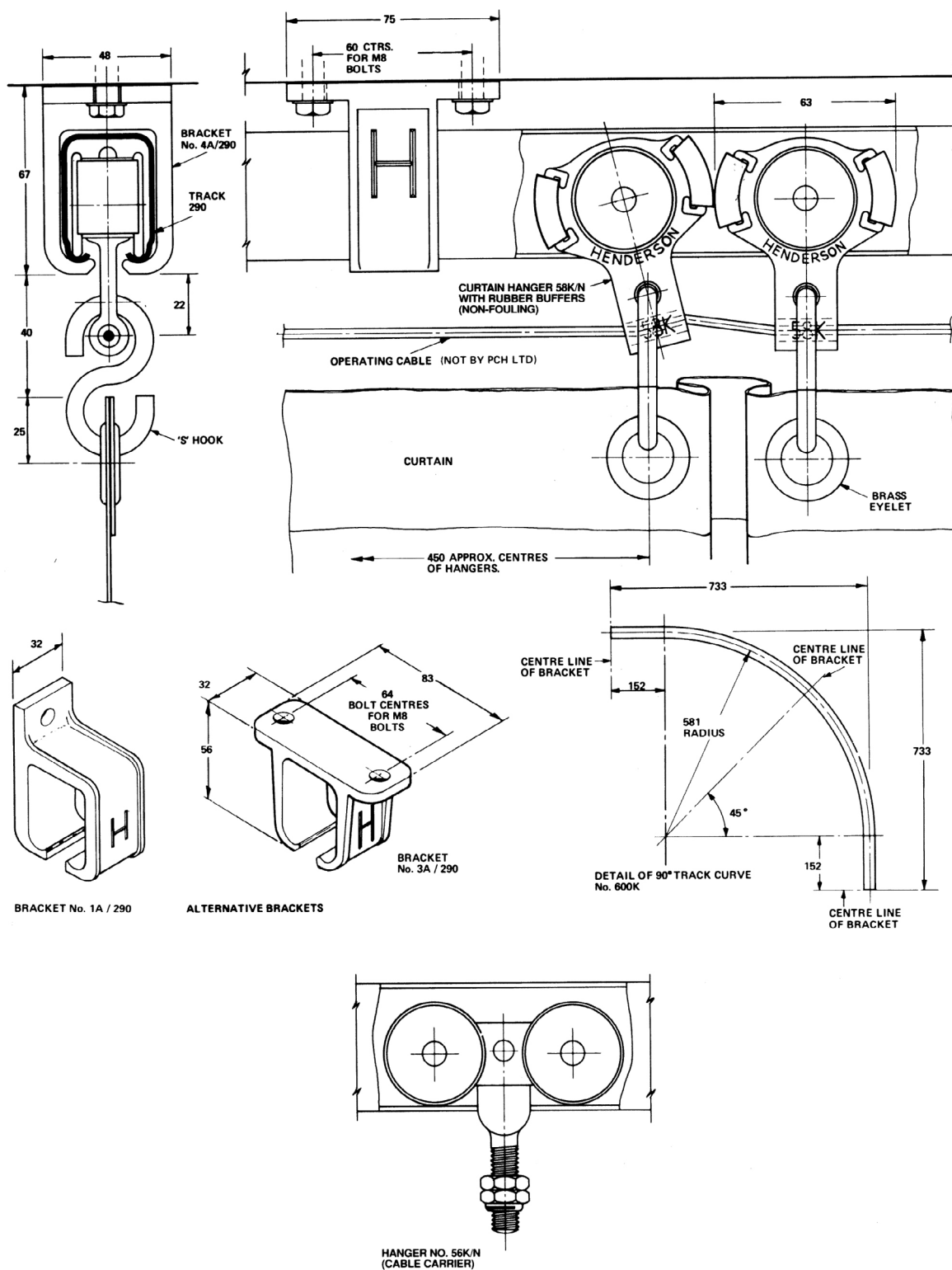
Overview

P C Henderson's tracks, curves and brackets can be used together with a choice of specially adapted hangers to make a variety of applications including curtains, cable carriers and safety runways in factories, warehouses, dairies, commercial/public buildings and vehicles.



Component Specification

Component	Description	Short Code				
		280	290	301	301H	305
Track	Galvanised steel track in 2000, 2500, 3000, 4000, 5000 & 6000mm	280/****	290/****	301/****	301H/****	305/****
Curves	Track curves	280TC	600K	600B	600BH	600D
Brackets	Face fixed, single	281	1A/290	1A/301	1A/301	1A/305
	Soffit fixed, single	-	3A/290	3A/301	3A/301	3A/305
	Sofft fixed, single 'in line'	-	4A/290	4A/301	4A/301	4A/305
	Soffit fixed, single, bolt on	-	4R/290S	4R/301S	4R/301S	4R/305S
Hangers	For sliding wooden doors (2 wheels)	285	-	-	-	-
	For sliding wooden doors (4 wheels)	-	57K/N	-	-	57C/S
	For sliding metal doors (2 wheels)	285N	56.5K/S	56.5A/S	56.5A/S	-
	For sliding metal doors (4 wheels)	-	56K/N	56A/S	56A/S	56C/S
	For folding wooden doors	283	-	-	-	-
	For hanging curtains	288	-	-	-	-
	For hanging curtains with hook	288H	-	-	-	-
	Nylon wheeled hanger and hook	-	58K/N	-	-	-
Stops	Clip stop	601H	-	-	-	-
	Track stop	287	HH3/290/SS	HH3/301/SS	HH3/301/SS	-



For further information, please contact us on:

UK Sales

T: +44 (0) 191 377 7345

E: sales@pchenderson.com

W: www.pchenderson.com

Export Sales

T: +44 (0) 191 377 7346

E: international@pchenderson.com

W: export.pchenderson.com