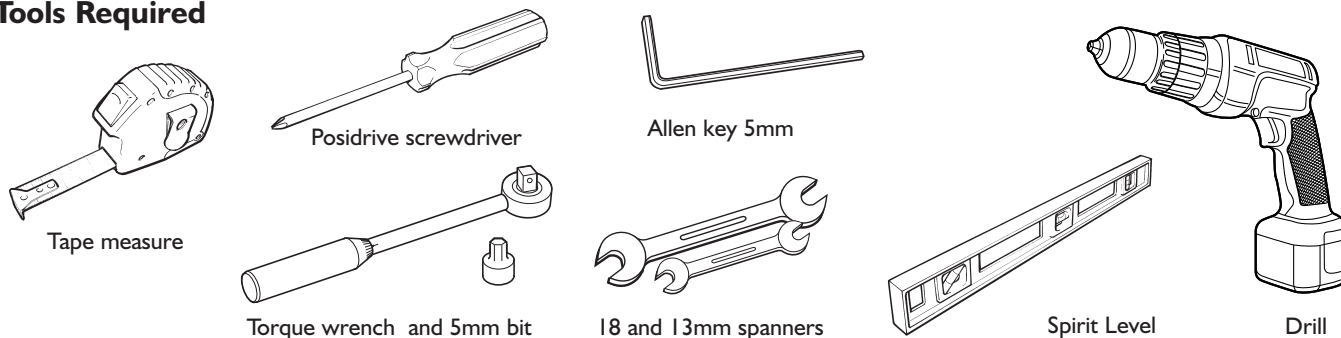
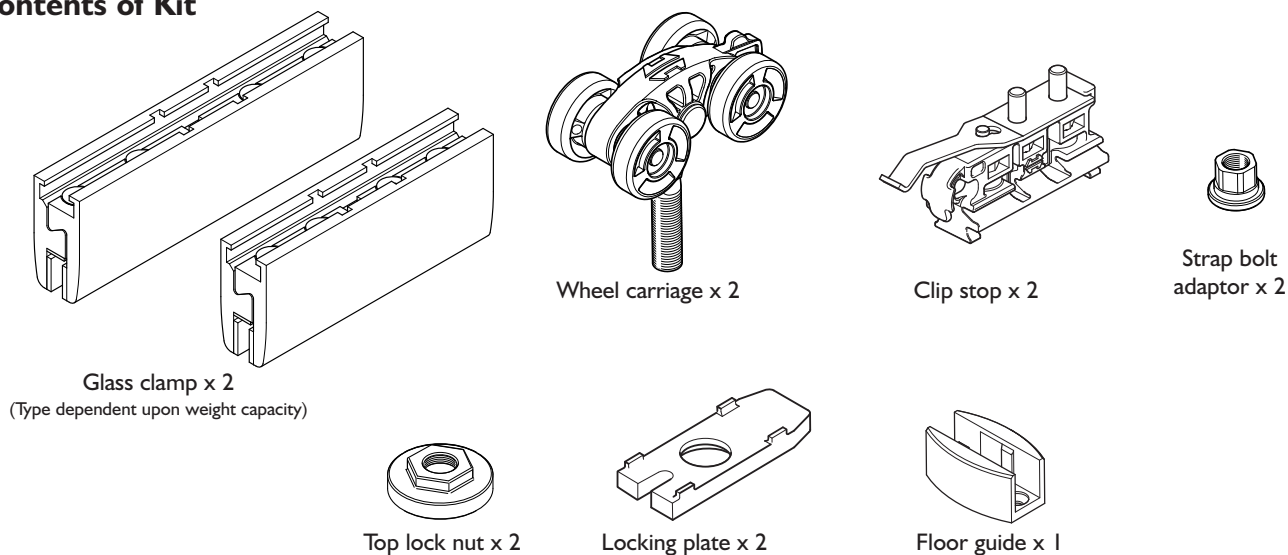


## FITTING INSTRUCTIONS - NOTICE DE POSE - MONTAGE HANDLEIDING - MONTAGEANLEITUNG ISTRUZIONI DI MONTAGGIO - INSTUCCIONES DE MONTAJE

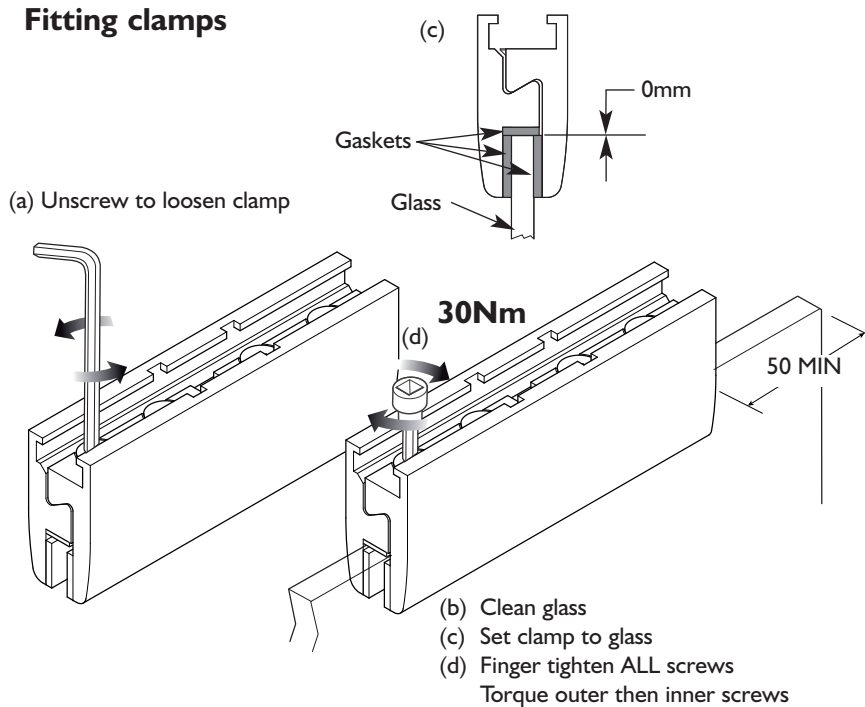
### Tools Required



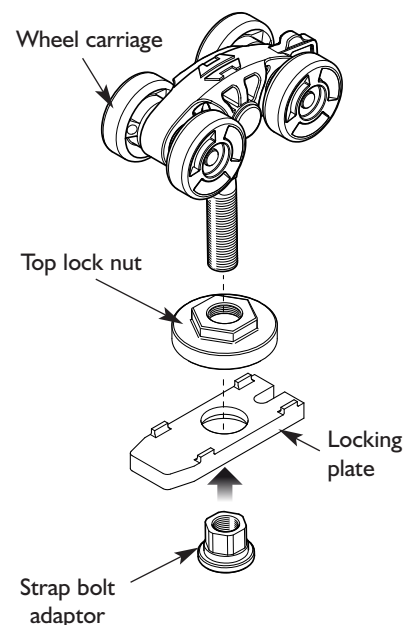
### Contents of Kit



### 1 Fitting clamps

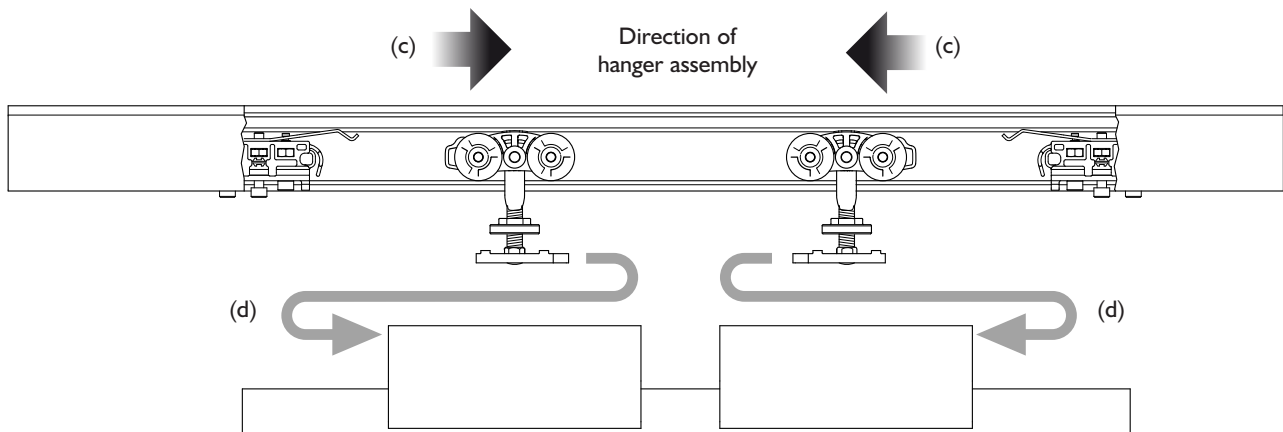
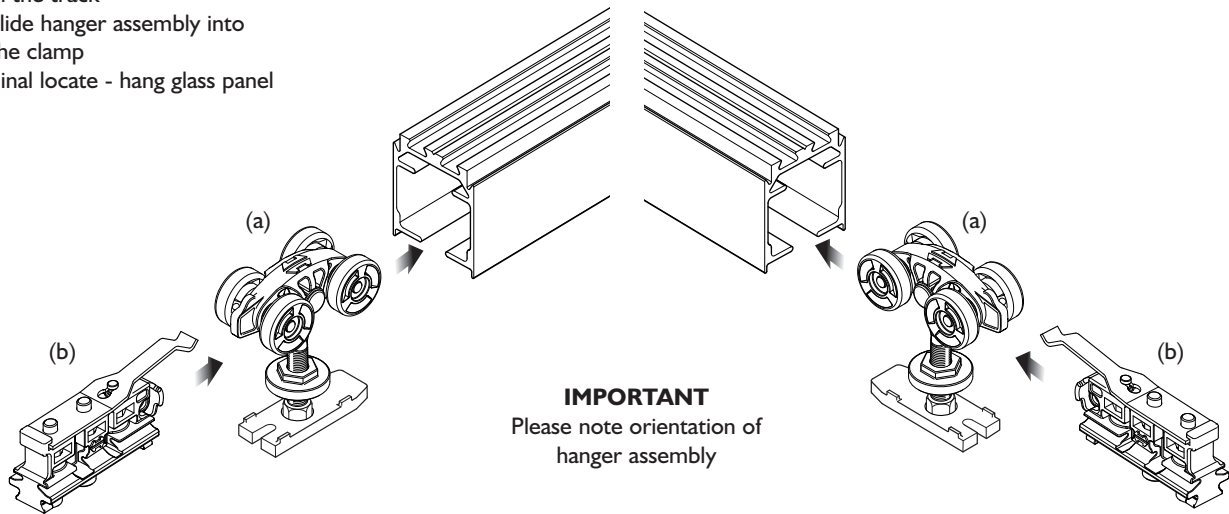


### 2 Assemble hanger components



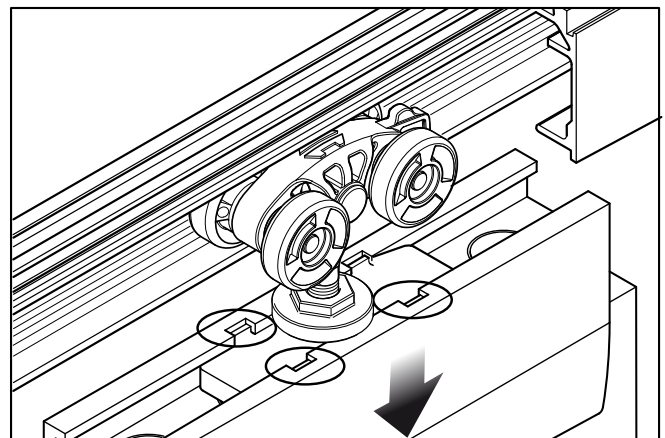
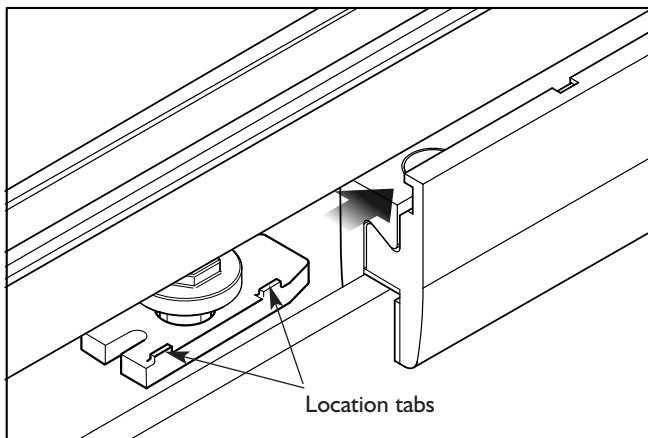
### 3 Hang glass door

- (a) Insert hanger assembly
- (b) Insert clip stop
- (c) Check orientation of hanger assembly in the track
- (d) Slide hanger assembly into the clamp
- (e) Final locate - hang glass panel

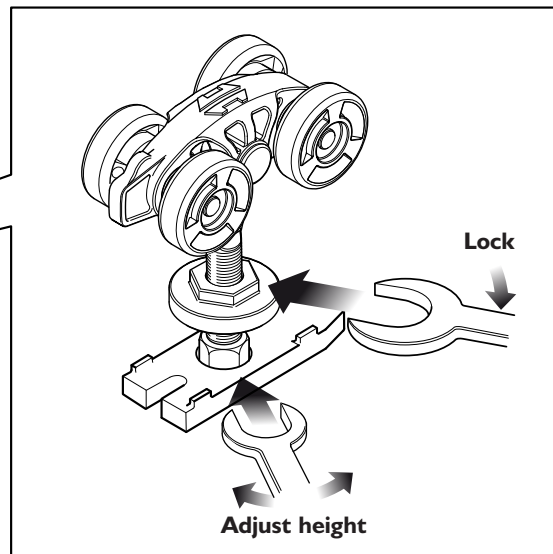
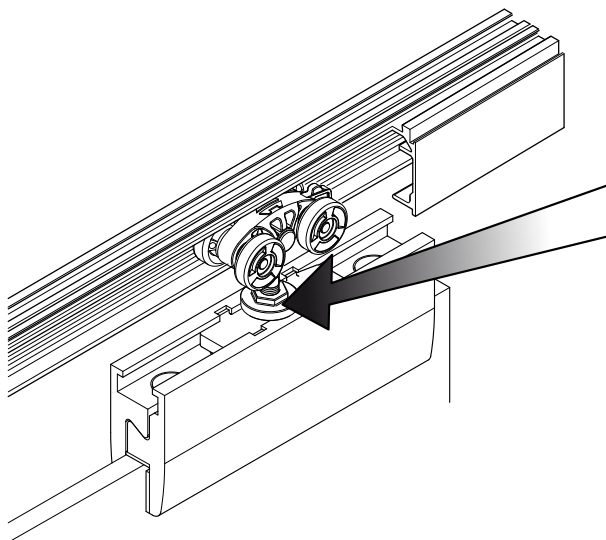


(d) Slide hanger assembly into the clamp channel

(e) Allow glass panel to hang by locating the tabs on the lock plate into the cut-outs in the clamp



#### 4 Height adjustment - Adjust strap bolt to set door height

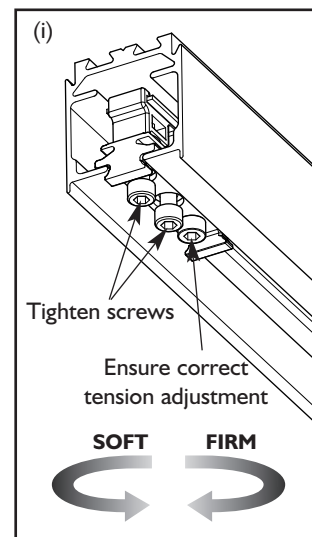
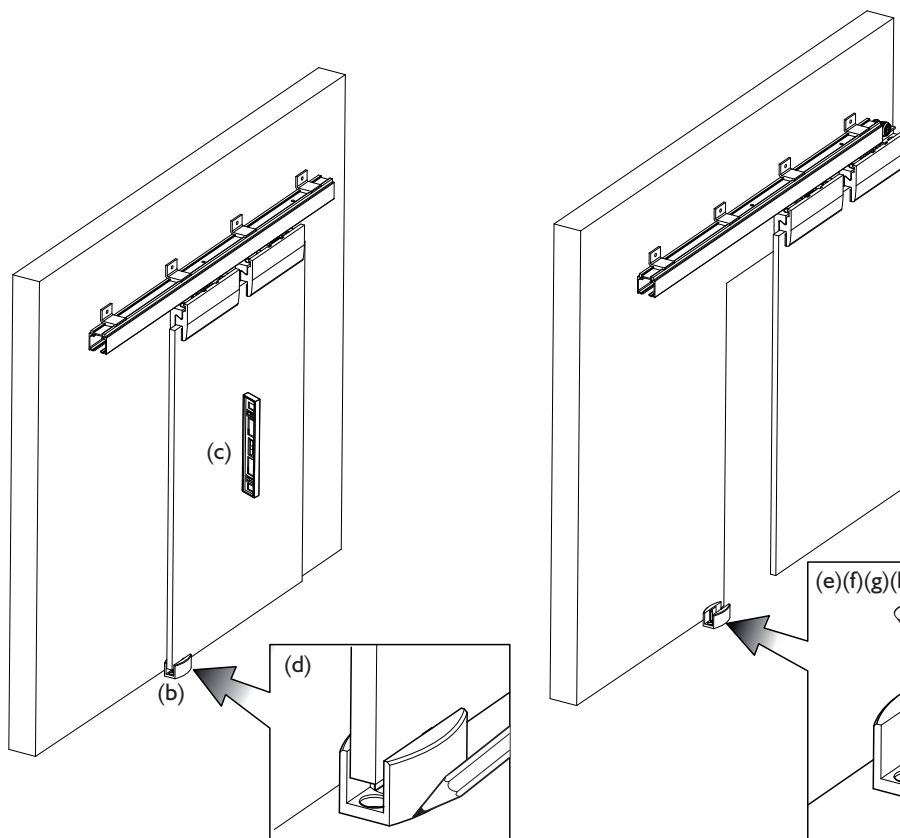
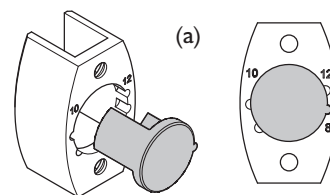


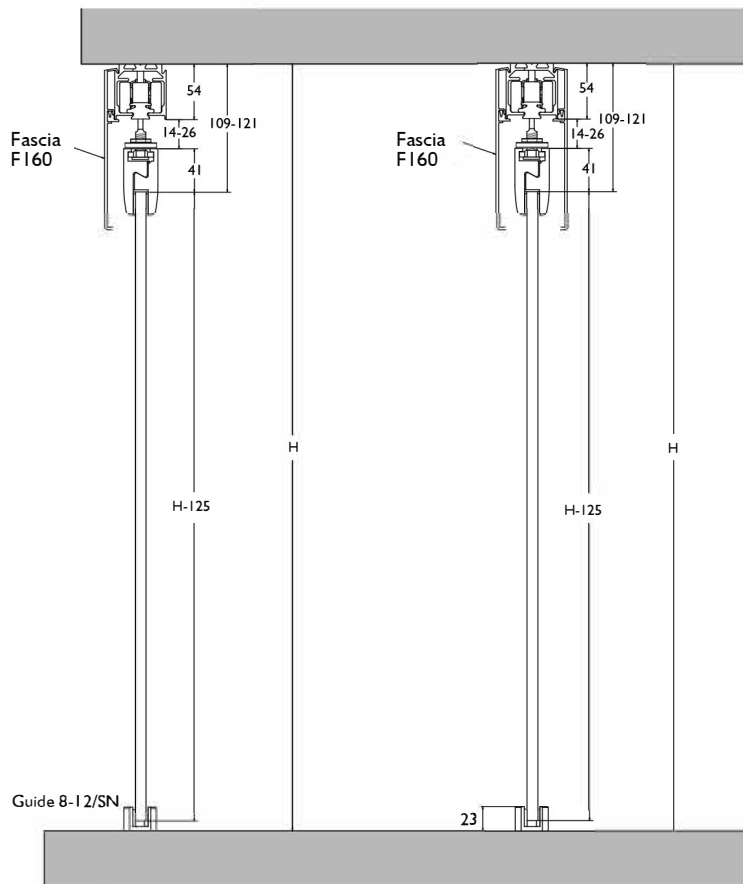
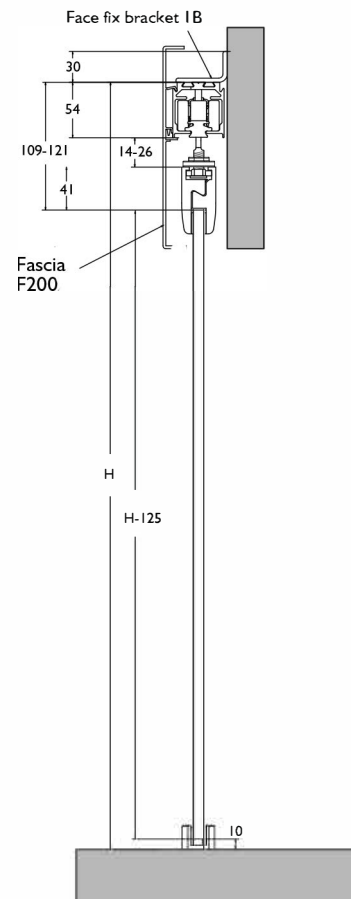
Ensure glass panel is level - hangers evenly adjusted

**NB** - minimum/maximum adjustment = 16 -24mm see diagram 6

#### 5 Set Floor Guide

- Set floor guide for glass door thickness, 8, 10 or 12mm
- Position floor guide
- Check level of panel with spirit level
- Mark position of guide
- Check proposed travel of door (when fully open the door is still in the guide)
- Re-position glass door
- Secure guide with screws
- Slide panel back into floor guide
- Secure retaining clip stop



**Pacer fascia****Pacer bracket**

(All dimensions in mm)