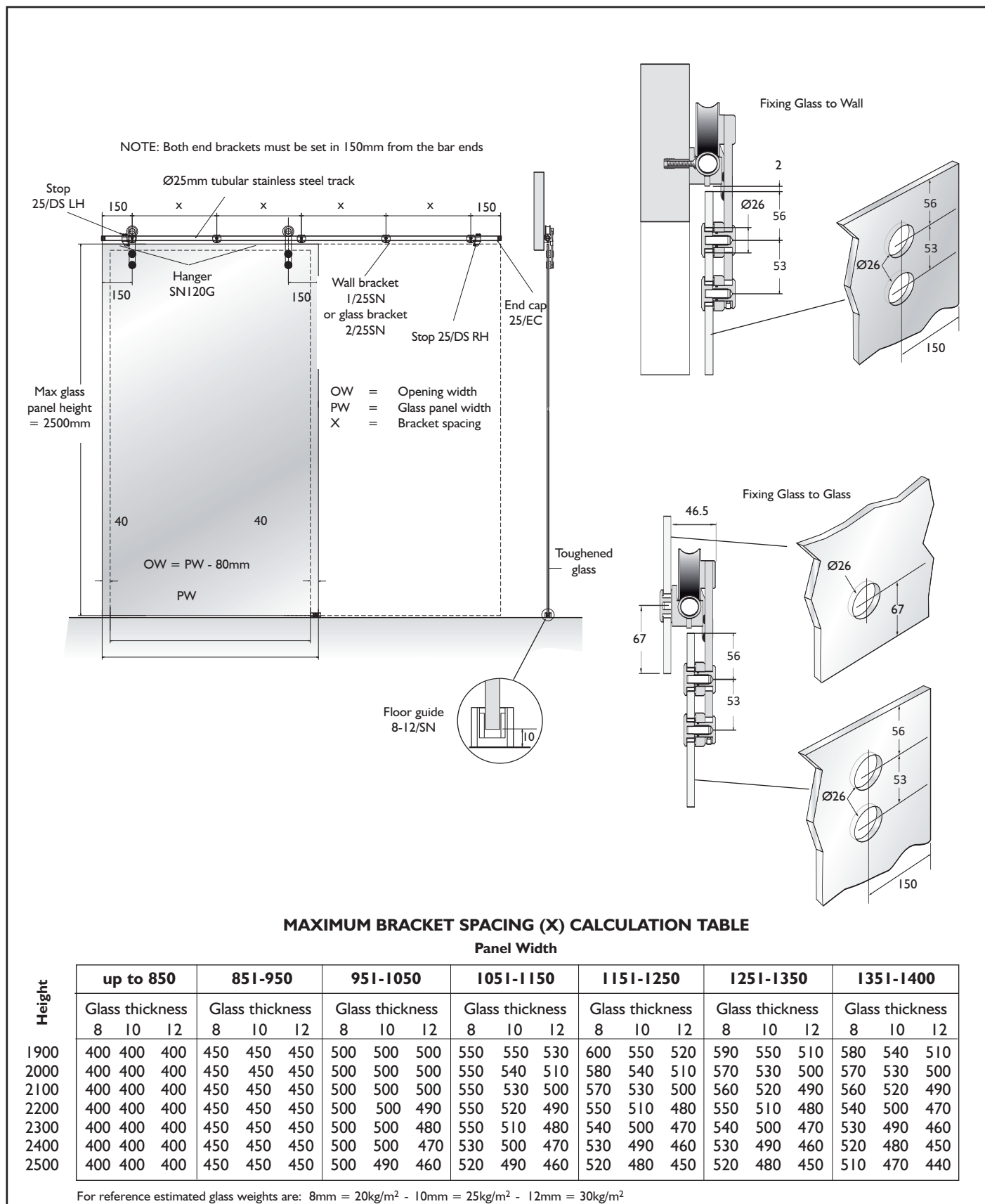
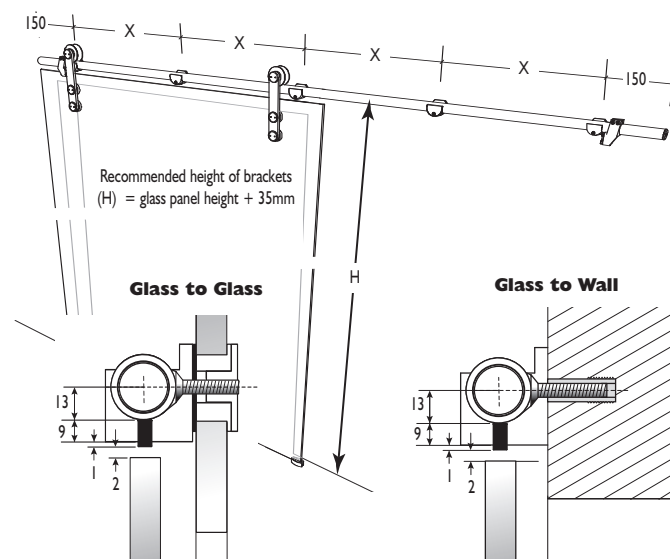


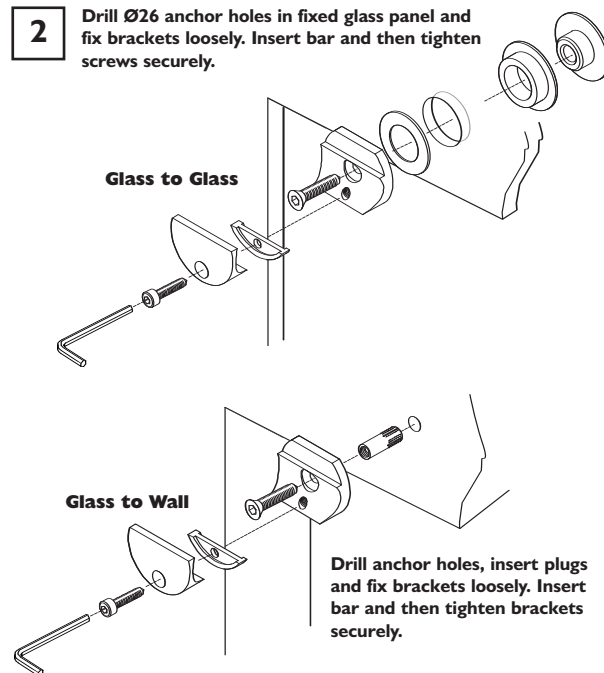
FITTING INSTRUCTIONS - NOTICE DE POSE - MONTAGE HANDLEIDING - MONTAGEANLEITUNG ISTRUZIONI DI MONTAGGIO - INSTRUCCIONES DE MONTAJE



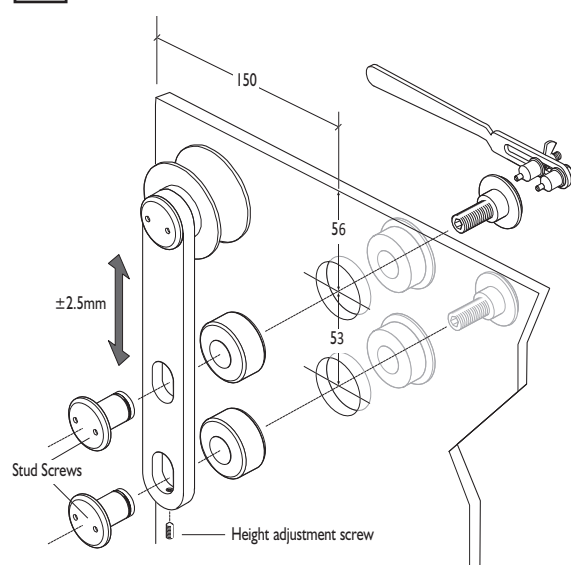
- 1** Mark position of brackets on the wall/glass ensuring that the correct number of brackets are used (see table).



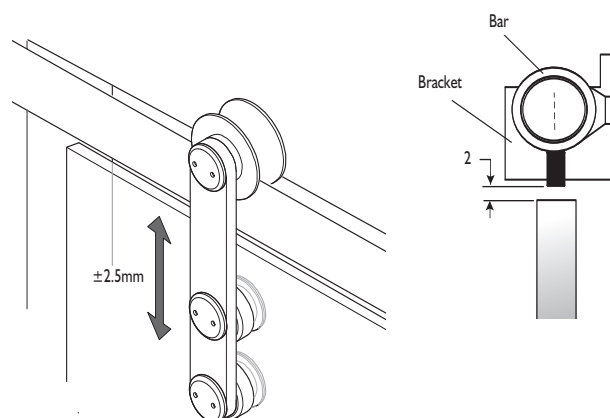
- 2** Drill Ø26 anchor holes in fixed glass panel and fix brackets loosely. Insert bar and then tighten screws securely.



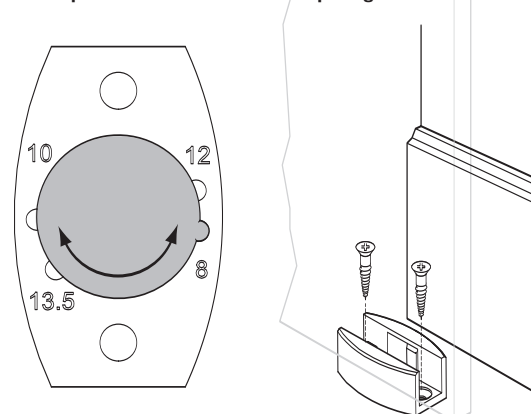
- 3** Unscrew the stud screws from the hanger and position the hanger on the door using the fitting tool provided.



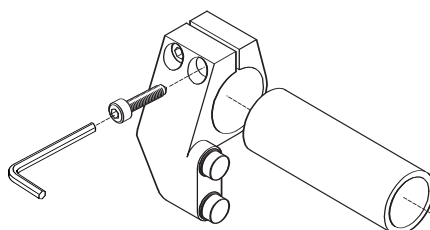
- 4** Hang the door on the track and adjust the alignment screw to ensure that the distance between the bottom of the bracket and top of the door is no greater than 2mm then tighten the stud screws.



- 5** Adjust the floor guide to the correct glass thickness by removing the insert and rotating to the correct position. Secure to the floor using the fixings provided ensuring the door remains located in the floor guide at all positions and is clear of the opening.



- 6** Secure the floor stops using the 4mm Allen key. Tighten to torque setting 6Nm and test door.



- 7** Insert end caps at each end of the tubular track.

