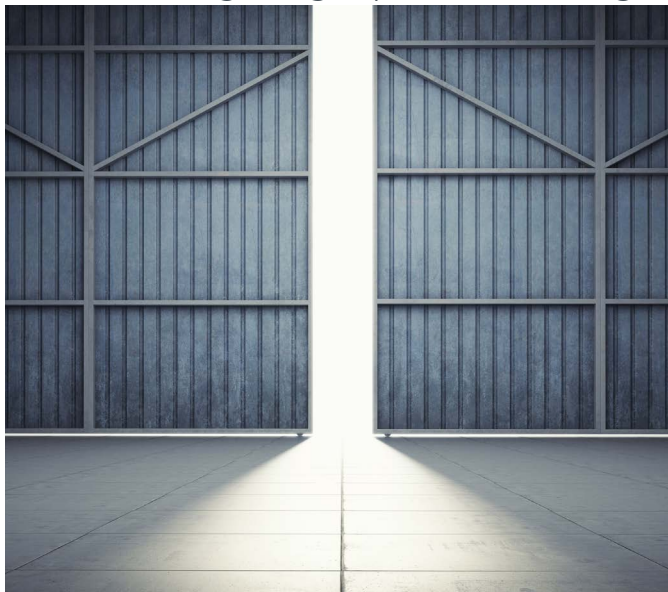


# Sterling

Heavy duty sliding system for bottom rolling wooden and metal doors weighing up to 8000kg



Sterling offers a robust system for heavy weight doors in industrial applications such as warehouses, agricultural buildings and aircraft hangers. Designed as a bottom rolling system, Sterling is suited to applications with insufficient structural support. Five systems are available to cater for wooden doors weighing up to 2000kg and metal doors weighing up to 8000kg. The system can be installed on single or multiple lines of track and can be face fixed or soffit fixed.



## Product Information

Product	Door Material	Door Thickness Range	Max. Door Weight
Sterling 350	Wood or Metal	44 – 54mm	350kg
Sterling 800	Wood or Metal	54 – 63mm	800kg
Sterling 2000	Wood or Metal	58 - 70mm (metal) or 70 - 100mm (wood)	2000kg
Sterling 3600	Metal	152mm (minimum)	3600kg
Sterling 8000	Metal	152mm (minimum)	8000kg

## Product Specification

Component	Description	350kg	800kg	2000kg	3600kg	8000kg
Top Guide Channel	Galvanised steel track - 2000, 2500 and 3000mm. 13 Channel is only available in 2000 and 3000mm lengths.	99/****	99/****	13/****	Not by P C Henderson*	
Brackets Fix at 900mm centres (max.)	Face fixed	31	31	1/13	Not by P C Henderson**	
	Soffit fixed and jointing	-	-	2/13		
	Double face fixed jointing	35X	35X	5/13		
	Double face fixed	35	35	-		
Top Guide Rollers 2 per door, except 3600 and 8000 systems which require 4 per door	Metal door - 7000mm max. height	-	-	-	104S/125	104S/125
	Metal door - 12500mm max. height	104/99	104/99	-	104S/175	104S/175
	Metal door - 20000mm max. height	-	-	104/13	104S/200	104S/200
	Wooden door - saddle fixing	53/99	53/99	53/13	-	-
Bottom Rollers 2 per door	Metal door - standard rail (wheel and bolt on only)	1SU	3SU	4SJU	-	-
	Metal door - standard roller	1S	3S	4SJ	3600IR*	8000IR*
	Metal door - geared	-	-	-	3600OR*	8000OR*
	Wooden door	2	3	4J	-	-
Drive Shaft Assembly 1 per door	Drive shaft assembly for 3600 and 8000 rollers	-	-	-	DASM*H	
Handle Assembly 1 per drive shaft assembly	Handle assembly for 3600 and 8000 rollers	-	-	-	WASM	
Bottom Rail	Galvanised steel - 2000, 3000 and 4000mm	298/****	298/****	298/****	-	-
	Heavy steel section - 2700mm	-	-	-	297/2700	297/2700
Stop	Double buffer stop	107	107	107	107	107
Bolts	Shoot bolt	994				
	Offset shoot bolt	994X				

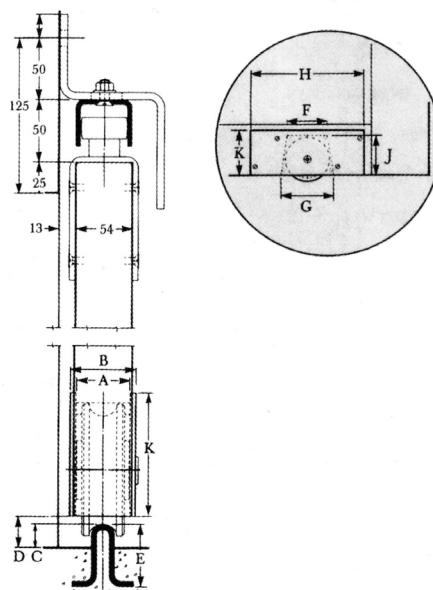
\* Replace with L for left hand and R for right hand

\*\*\*\* Replace with length of track for full product code

# Sterling cont.

## Product Diagrams

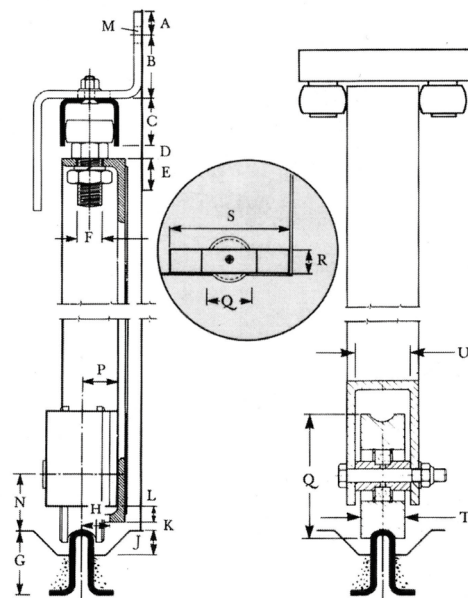
### FOR WOOD DOORS



#### Dimensions

Track	A	B	C	D	E	F	G	H	J	K
350	44	54	20	25	50	115	135	305	95	102
800	51	63	20	30	50	135	175	381	130	152

### FOR METAL DOORS



#### Dimensions

Track	A	B	C	D	E	F	G	H	J	K	L	M	N	P	Q	R	S	T	U
350	20	50	38	10	25	21	50	22	20	6	13	12	44	29	110	75	305	40	50
800	20	50	38	10	25	2	50	22	20	6	13	12	62	32	146	75	381	40	50
2000	32	35	85	25	30	26	50	25	20	10	12	16	85	32	197	102	457	45	56
3600				20	127	32	65	44							286			105	128
8000				20	203	32	65	44							436			105	128