

TANGENT FOLDING 290

HENDERSON

35kg

Wood

Metal

Interior

Exterior

For top hung folding wooden or metal doors weighing up to 35kg

Overview

Tangent Folding is a range of robust, top-hung hardware systems for wooden or metal doors weighing up to 35kg. Ideal for commercial or light industrial application, the system caters for panelled, flush or glazed doors. Doors can fold to one or both sides of the opening or can be stacked behind a reveal if required. The system covers any width of opening allowing any number of folding doors to be used.

Panels should be in units of four, six or eight and can be hinged to post or free floating. For applications where an odd number of doors is required, a swinging access door can be incorporated into a panel which is hinged to post. Alternatively an access door can be independently hinged to post.

When the system is fitted externally a canopy is recommended (not supplied by P C Henderson).

Features and Benefits

- Doors can fold to one or both sides of the opening
- Any number of folding doors can be used to cover an opening width
- Caters for metal and wooden doors weighing up to 35kg each
- Floating units should consist of an even number of leaves in units of four, six or eight

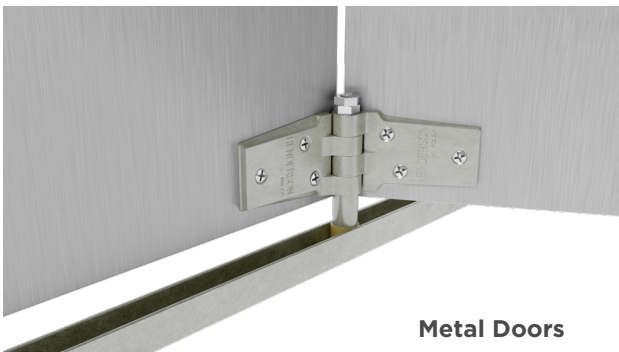
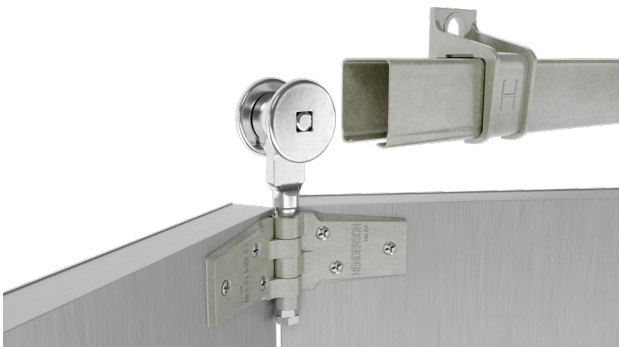


Wooden Doors

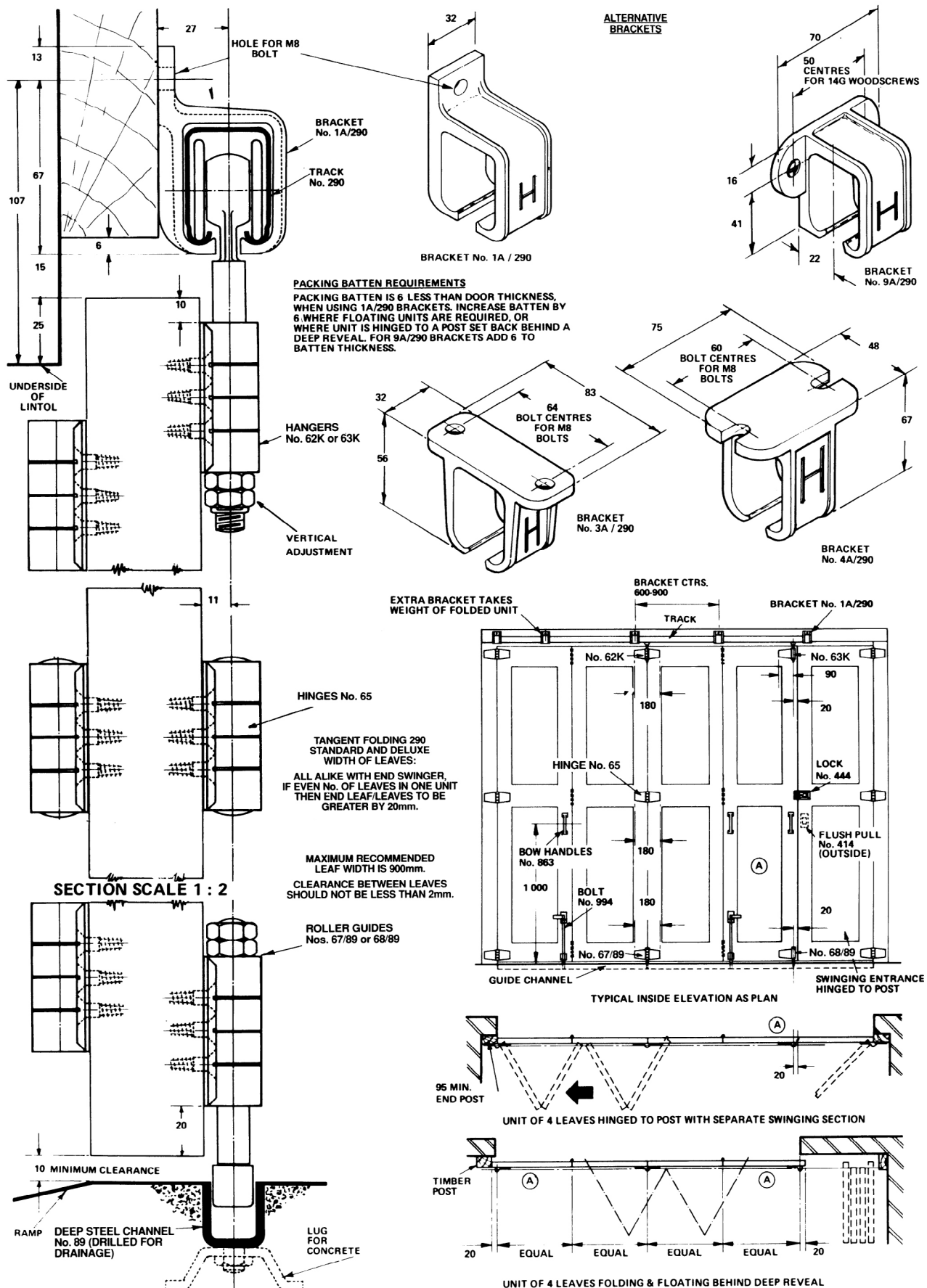
Product and Door Specification				
Product	Max Door Height	Max Door Width	Door Thickness Range	Max Door Weight
Tangent Folding 290	2400mm	900mm	35 - 50mm	35kg

Component Specification		
Component	Description	Short Code
Track Equal to width of opening (extra if doors slide further)	Galvanised steel channel available in 2000, 2500, 3000, 4000, 5000 and 6000mm lengths	290/****
Brackets Fix every 900mm max and at track joints. Fix additional brackets where doors stack	Face fixed	1A/290
	Soffit fixed	3A/290
Hangers (1 for every 2 door leaves)	Intermediate hanger	62K
	End hanger	63K
Hinges 3 in height	Aluminium alloy backflap hinge	65
	Intermediate guide	67/89
	Intermediate guide spindle	67/89SP
Guides 1 for every 2 door leaves	End guide	68/89
	Channels Same length as track	89/****
Channels Same length as track		Galvanised steel channel in 2000, 2500, 3000 and 6000mm lengths

\*\*\*\* Replace by length of track for full short code



Metal Doors



For further information, please contact us on:

#### UK Sales

T: +44 (0) 191 377 7345

E: [sales@pchenderson.com](mailto:sales@pchenderson.com)

W: [www.pchenderson.com](http://www.pchenderson.com)

#### Export Sales

T: +44 (0) 191 377 7346

E: [international@pchenderson.com](mailto:international@pchenderson.com)

W: [export.pchenderson.com](http://export.pchenderson.com)