

TANGENT FOLDING 301 & 301H HENDERSON

55kg 70kg Wood Metal Interior Exterior

For top hung folding wooden or metal doors weighing up to 55kg and 70kg

Overview

Tangent Folding is a range of robust, top-hung hardware systems for wooden or metal doors weighing up to 55kg and 70kg. Ideal for commercial or light industrial application, the system caters for panelled, flush or glazed doors. Doors can fold to one or both sides of the opening or can be stacked behind a reveal if required. The system covers any width of opening allowing any number of folding doors to be used.

Panels should be in units of four, six or eight and can be hinged to post or free floating. For applications where an odd number of doors is required, a swinging access door can be incorporated into a panel which is hinged to post. Alternatively an access door can be independently hinged to post.

When the system is fitted externally a canopy is recommended (not supplied by P C Henderson).



Wooden Doors

Features and Benefits

- Doors can fold to one or both sides of the opening
- Any number of folding doors can be used to cover an opening width
- Caters for metal and wooden doors weighing up to 55kg or 70kg each
- Floating units should consist of an even number of leaves in units of four, six or eight

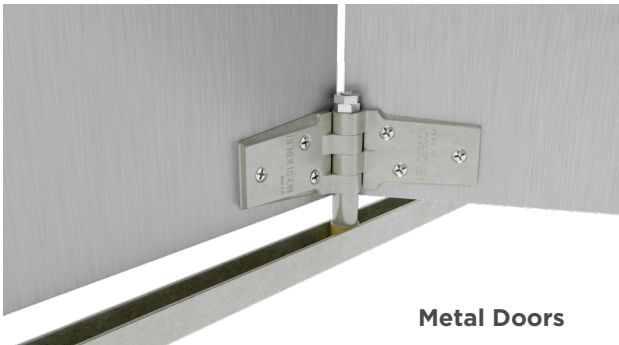
Product and Door Specification

Product	Max Door Height	Max Door Width	Door Thickness Range	Max Door Weight
Tangent Folding 301	3300mm	900mm	45 - 55mm	55kg
Tangent Folding 301H	3600mm	900mm	45 - 55mm	70kg

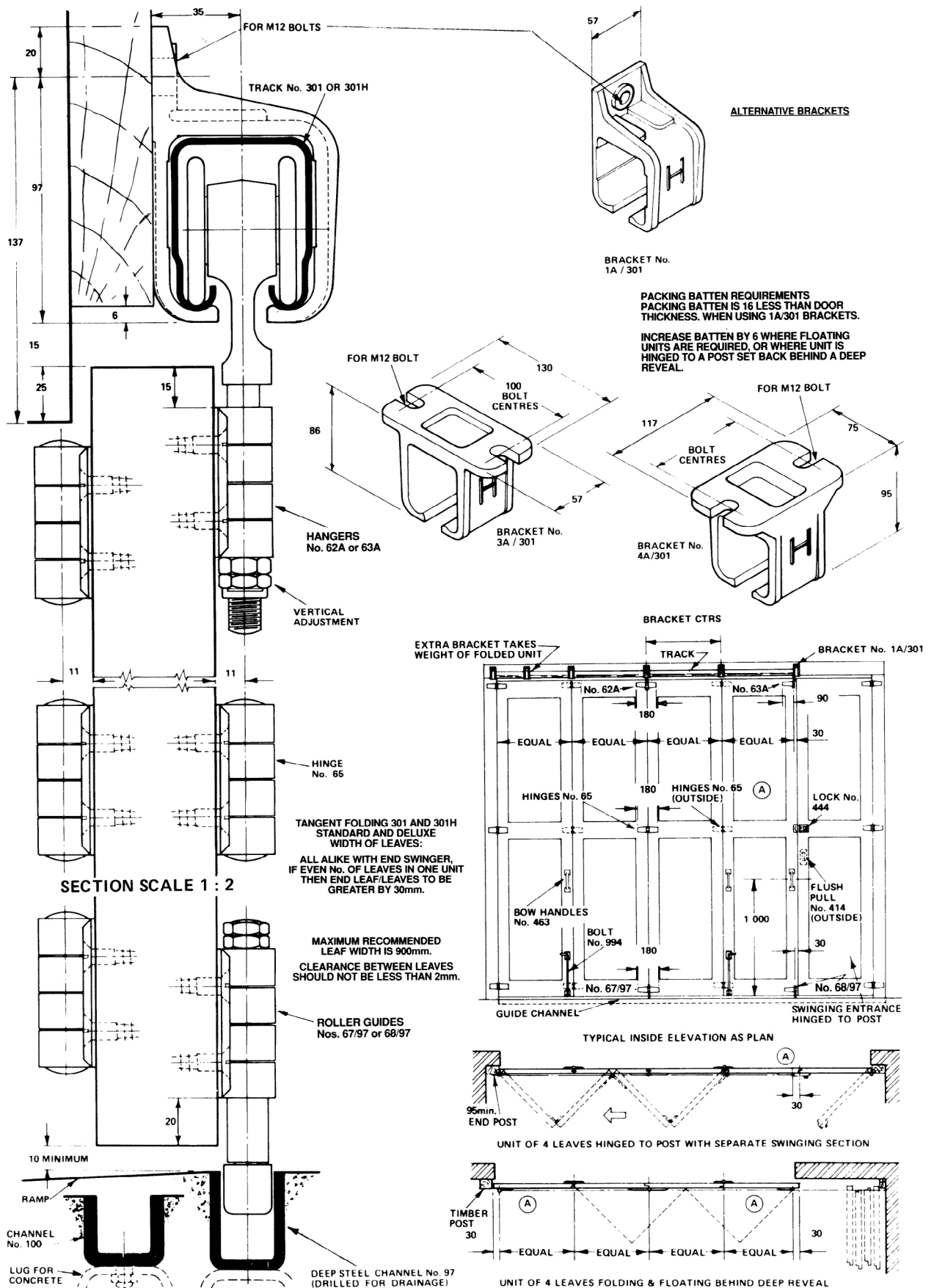
Component Specification

Component	Description	Short Code	
		301	301H
Track Equal to width of opening (extra if doors slide further)	Galvanised steel channel available in 2000, 2500, 3000, 4000, 5000 and 6000mm lengths	301/****	301H/****
Brackets Fix every 900mm max and at track joints. Fix additional brackets where doors stack	Face fixed	1A/301	
	Soffit fixed	3A/301	
Hangers (1 for every 2 door leaves)	Intermediate hanger	62A	
	End hanger	63A	
Hinges 3 in height	Aluminium alloy backflap hinge	65	
Guides 1 for every 2 door leaves	Intermediate guide	67/97	
	Intermediate guide spindle	67/97SP	
	End guide	68/97	
Channels Same length as track	Galvanised steel channel in 2000, 2500, 3000, 4000 and 6000mm lengths	97/****	

**** Replace by length of track for full short code



Metal Doors



For further information, please contact us on:

UK Sales

T: +44 (0) 191 377 7345

E: sales@pchenderson.com

W: www.pchenderson.com

Export Sales

T: +44 (0) 191 377 7346

E: international@pchenderson.com

W: export.pchenderson.com