

SOLTAIRE 120

Top hung sliding system for external patio doors weighing up to 120kg each.



Features & Benefits

- Top hung sliding door system catering for wooden or metal doors weighing up to 120kg each. For heavier doors up to 180kg and 250kg, please see Soltaire 180 and Soltaire 250kg.
- Ideally suited to heavy duty internal sliding doors or external sliding patio door applications.
- Caters for various door configurations including single panel, bi-parting, bypassing and fixed panel applications.
- Track can be soffit or face fixed to allow for flexibility of installation.
- Components are manufactured from marine grade 316 stainless steel for excellent corrosion resistance.
- Specified as individual components to allow for flexibility of installation. Choose between our choice of hangers, brackets and guide options.
- Optional extras include a low headroom kit for reduced clearance between the top of the door and bottom of the track allowing for concealed hardware.
- Also available in kit pack format for easy specification.

Product Information

Product	Max. Door Width	Door Thickness Range	Max. Door Weight
Soltaire 120	3000mm	24 - 48mm	120kg

P C Henderson Ltd
Durham Road, Bowburn,
County Durham,
DH6 5NG

UK SALES
T: +44 (0) 191 377 7345
E: sales@pchenderson.com
W: www.pchenderson.com

HENDERSON

Product Specification

Component	Description	Product Code
Track	Anodised aluminium track - 2000, 2500, 3000, 4000, 5000 and 6000mm	120/****
Brackets	Face fixed stainless steel brackets - 600mm spacing required	1/SS
	Double run face fixed stainless steel brackets - 900mm spacing required	5H/SS
Hangers	Top fixed, surface mounted hanger - wooden and metal doors	51/120/SS
	Concealed fixing hanger - wooden doors	57/120/SS
	Angle frame hanger - metal doors	56/120/SS
Guides	Side mounted guide	105SS/94
	Concealed fixing guide	106SS/94
	Floor guide	101SS
	Wall mounted guide	102SS/94
	Bottom guide - angle frame metal door	104P/89
	Bottom guide - box section metal door	104PX/89
Channels	Aluminium guide channel - 1500, 2000, 2500, 3000, 4000 and 6000mm	94X/****
	Stainless steel guide channel - 2000 and 3000mm	89/****SS
	Black polypropylene channel - 2000, 2500, 3000, 3500, 4000, 5000 and 6000mm	94P/****
	Anodised aluminium support channel - 2000, 2500, 3000, 3500, 4000, 5000 and 6000mm	94SC/****
Track Stop	Track Stop	HH4/AN
Brush Strips	Available in 10, 15, 20 and 25mm brush heights - per meter	BS**B

**** Replace with length for full product code.

**Replace with brush height for full product code.

Optional Accessories



Compact 120

Low Headroom Kit

- Reduce the clearance between the top of the door and the bottom of the track to 2mm.
- Conceals the door hardware - giving an appearance of floating doors.

Product Information

Product Code	Max. Door Width	Min. Door Thickness	Max. Door Weight
CP120	1500mm	35mm	120kg



SIM100

Simultaneous Action Kit

- Suitable for bi-parting doors applications.
- Move one door and the other will open / close simultaneously.

Product Information

Product Code	Max. Door Width	Door Thickness Range	Door Weight Range
SIM100	1250mm	25 - 50mm	25 - 100kg

P C Henderson Ltd

Durham Road, Bowburn,
County Durham,
DH6 5NG

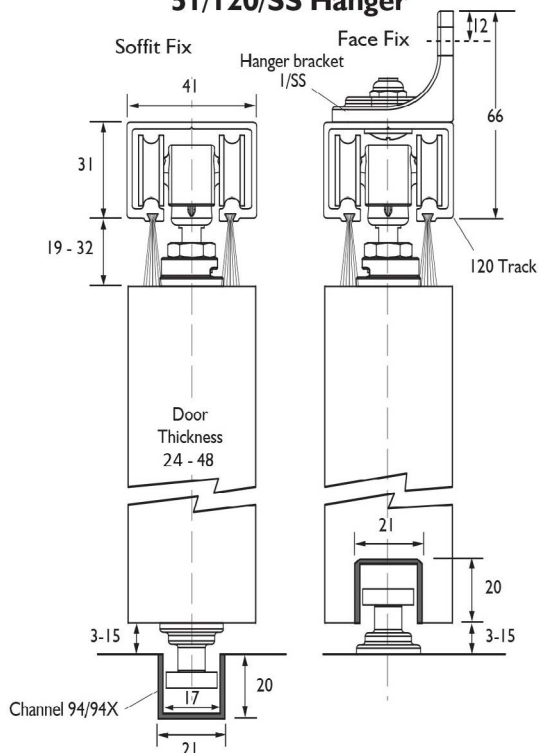
UK SALES

T: +44 (0) 191 377 7345
E: sales@pchenderson.com
W: www.pchenderson.com

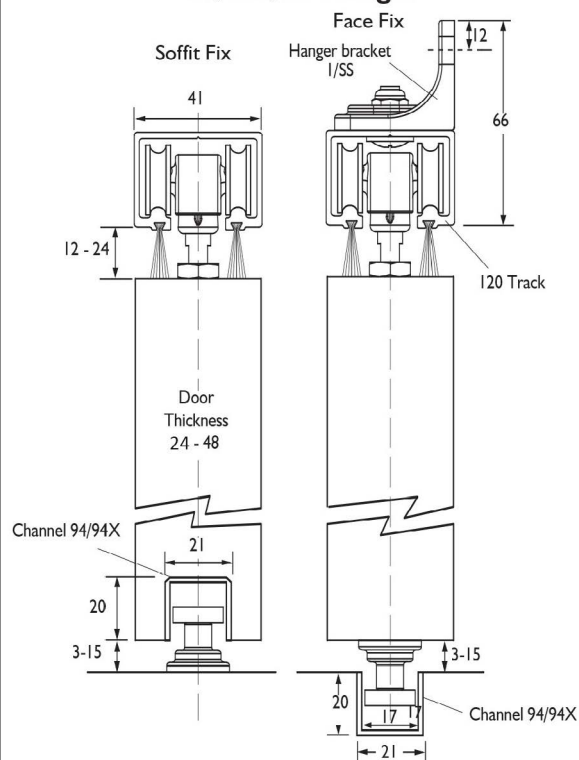
HENDERSON

Product Diagrams

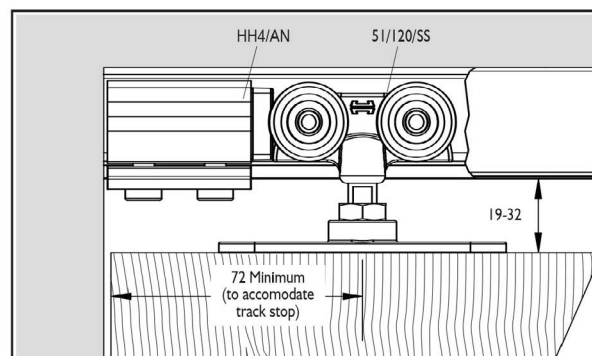
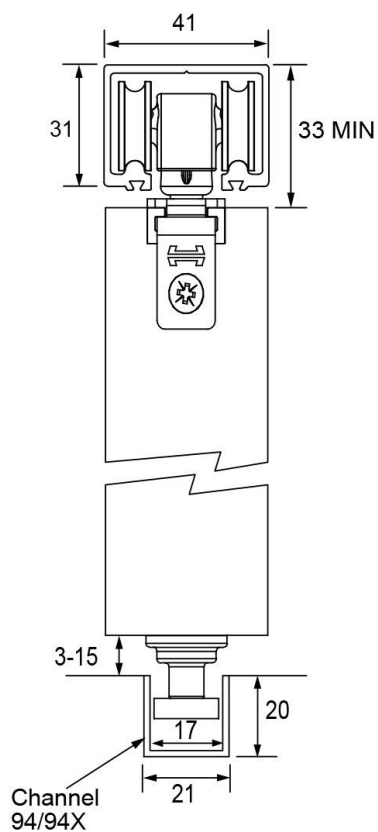
51/120/SS Hanger



57/120/SS Hanger

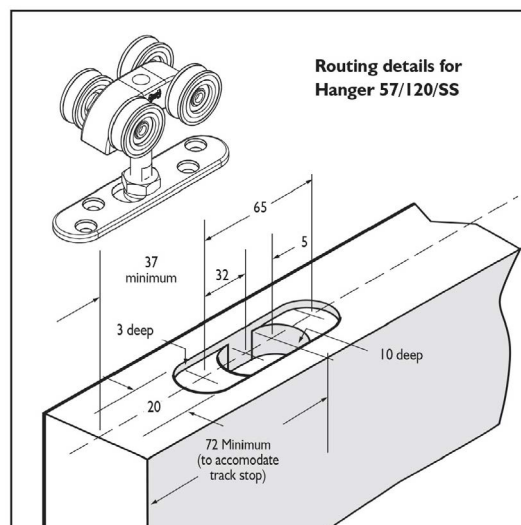


Soltaire 120 with Compact 120



(All dimensions shown in mm's)

Routing details for Hanger 57/120/SS



P C Henderson Ltd

Durham Road, Bowburn,
County Durham,
DH6 5NG

UK SALES

T: +44 (0) 191 377 7345
E: sales@pchenderson.com
W: www.pchenderson.com

HENDERSON