

TWINBOLT

HENDERSON

Fitting Instructions

KIT AND DOOR SPECIFICATION

Short Code	For Use With	Door Thickness Range	Max. Door Height
TB/SF	Securefold 50 and 100	56 - 68mm	3300mm
TB/SFM	Securefold 50 and 100 (square mortice)	56 - 68mm	3300mm
TB/SF150	Securefold 150	56 - 68mm	4000mm
TB/SFBR	Securefold Bottom Rolling	56 - 68mm	3000mm

KIT CONTENTS



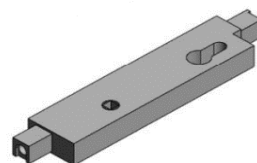
2 x Floor Keep
(x 1 in SFBR Kits)



2 x Keep Plates



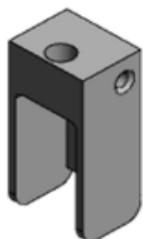
1 x Cover Plate



1 x Lock Box



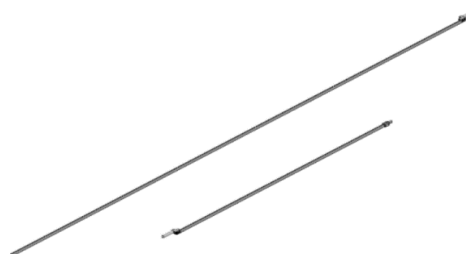
1 x Backing Plate



2 x Shoot Bolt Block



1 x Drill Guide



1 x Long Lock Rod and 1 x Short Lock Rod

Accessories



Routing Cover Strip
(Available in black, brown or white)



Twinbolt Handle Kit
(Includes handle, cylinder cover plate and screws)

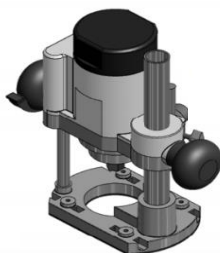
Screw Pack Contents

- 4 x Ø4.5x30 wood screw
- 2 x 1 3/4" x 8g wood screws
- 2 x M4x9 countersunk head screws
- 4 x M4x12 countersunk head screws
- 2 x lock box to rod connectors

TOOLS REQUIRED



Drill and Bit
(Ø3.0 & Ø4.1, for



Router



Posi Drive



Hacksaw

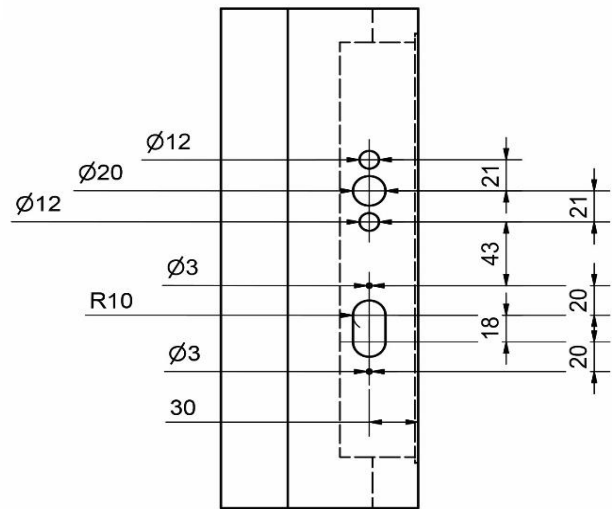
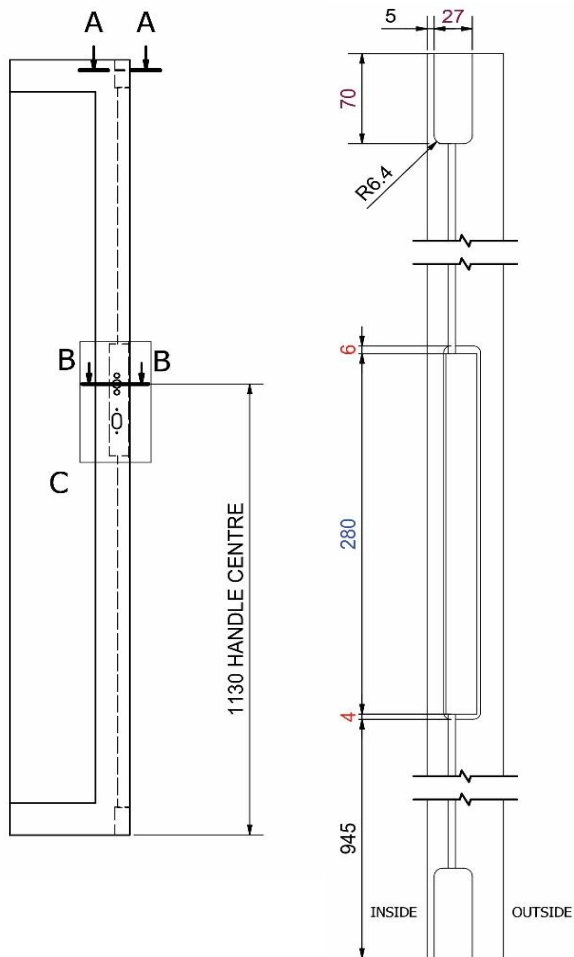


Tape
Measure



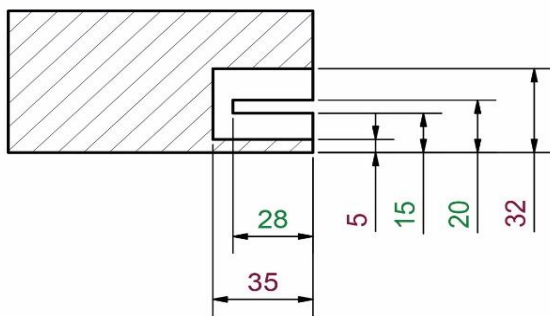
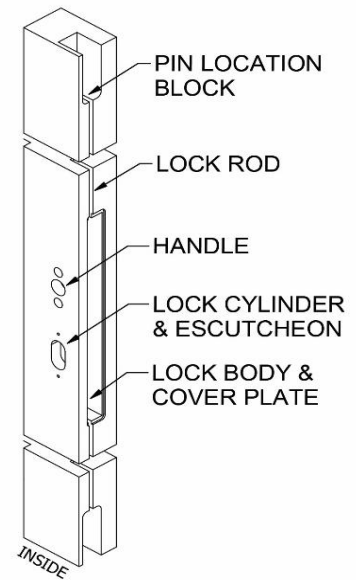
Pencil

MORTICE OUTWARD OPENING ROUTING DETAIL



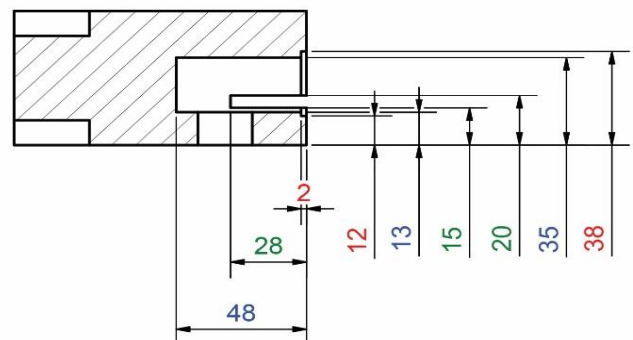
C (1 : 3)

HANDLE & LOCK CYLINDER W/ESCUTCHEON



A-A (1:2)

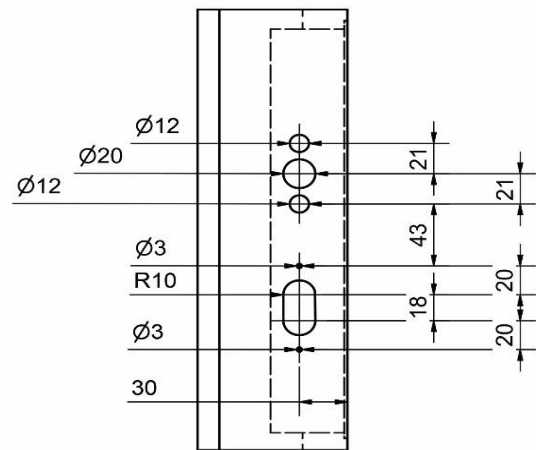
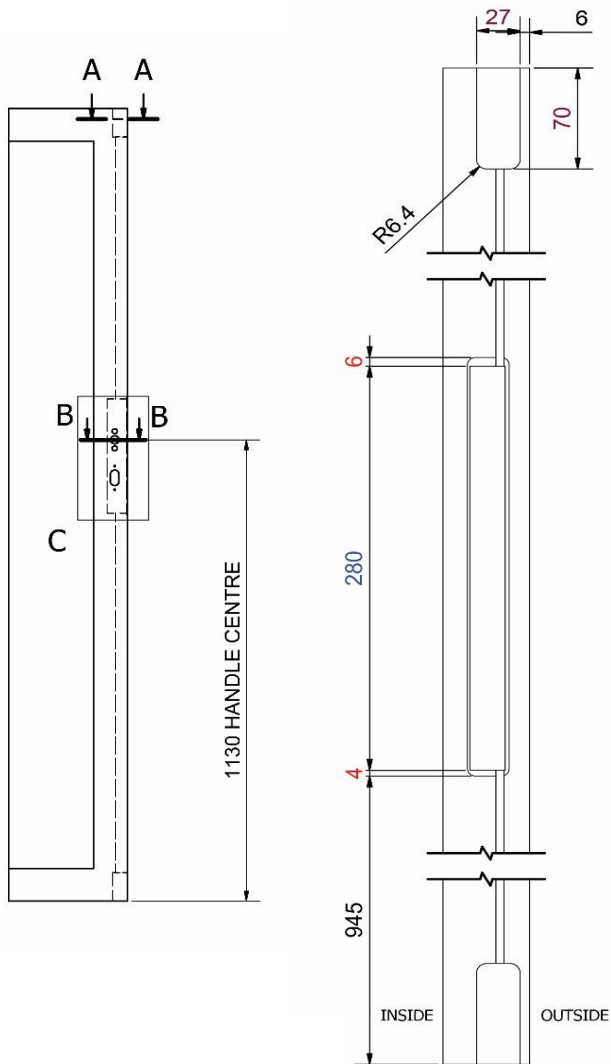
LOCK ROD & PIN LOCATION BLOCK



B-B (1:2)

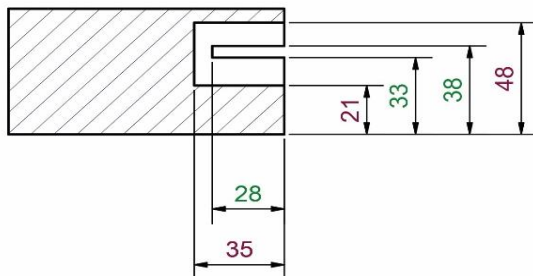
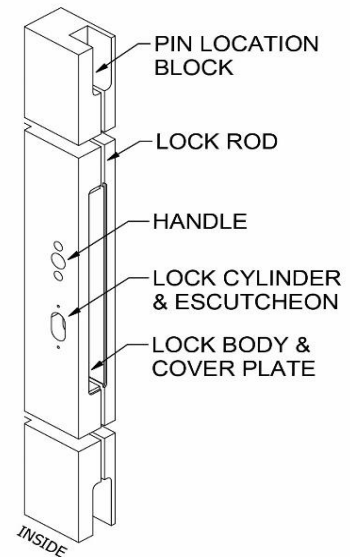
LOCK ROD, LOCK BODY & COVER PLATE

MORTICE INWARD OPENING ROUTING DETAIL



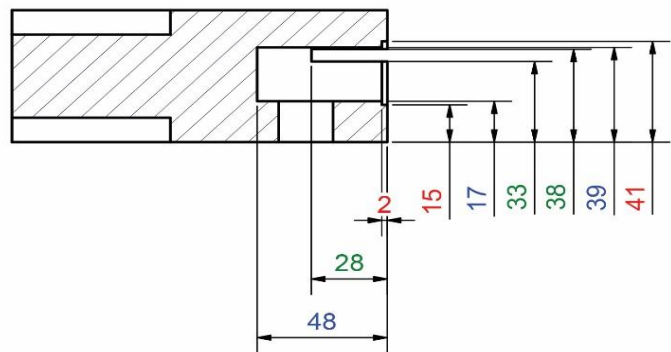
C (1 : 3)

HANDLE & LOCK CYLINDER W/ESCUTCHEON



A-A (1 : 2)

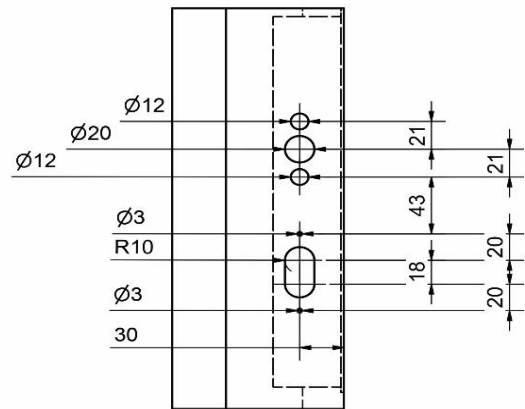
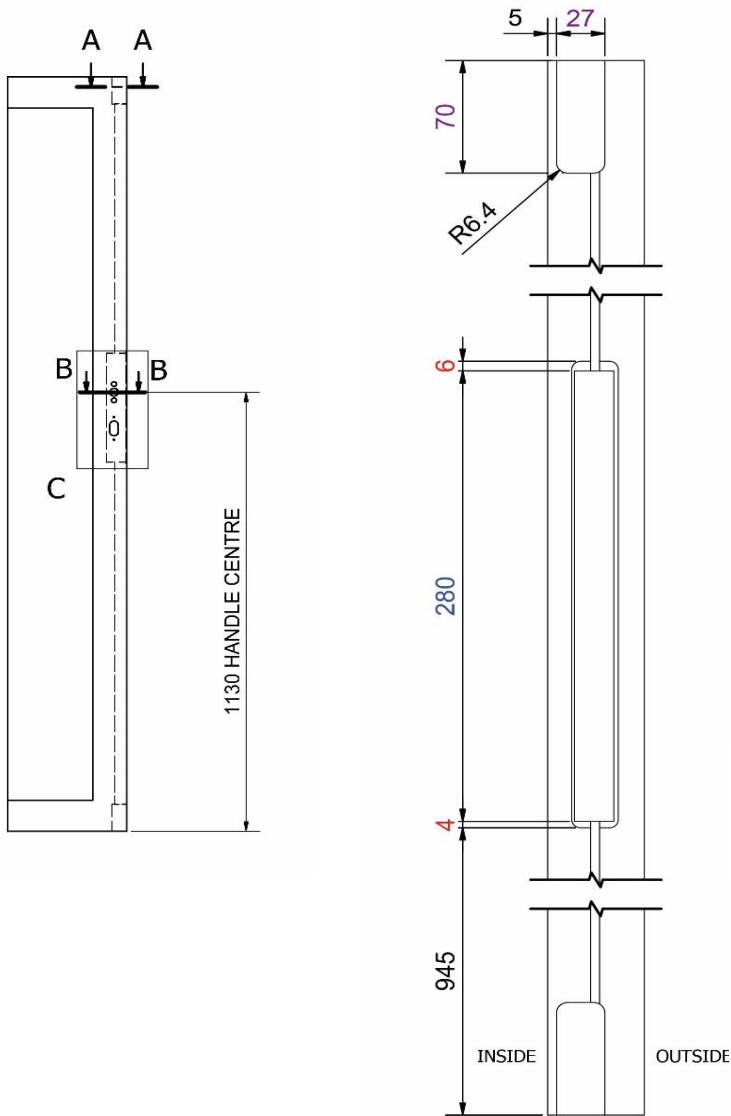
LOCK ROD & PIN LOCATION BLOCK



B-B (1 : 2)

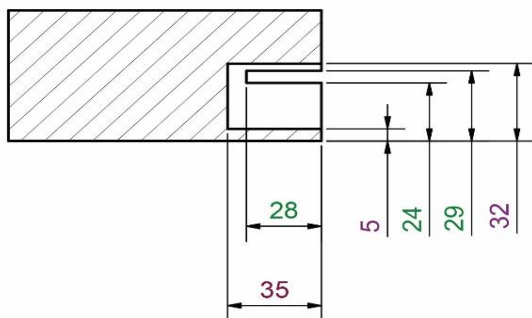
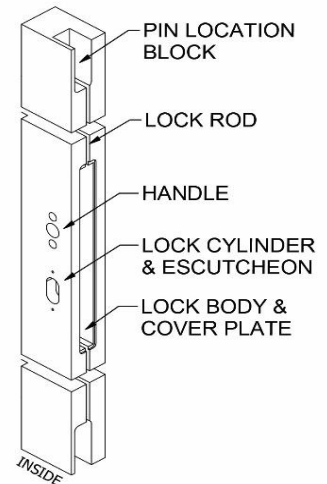
LOCK ROD, LOCK BODY & COVER PLATE

NON MORTICE OUTWARD OPENING ROUTING DETAIL



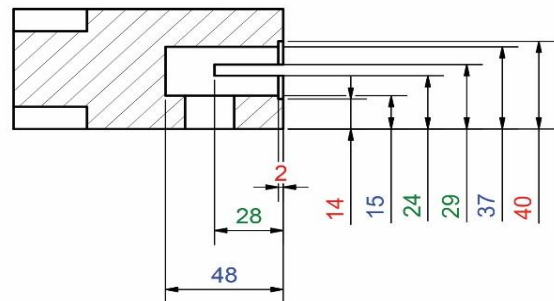
C (1 : 3)

HANDLE & LOCK CYLINDER W/ESCUTCHEON



A-A (1:2)

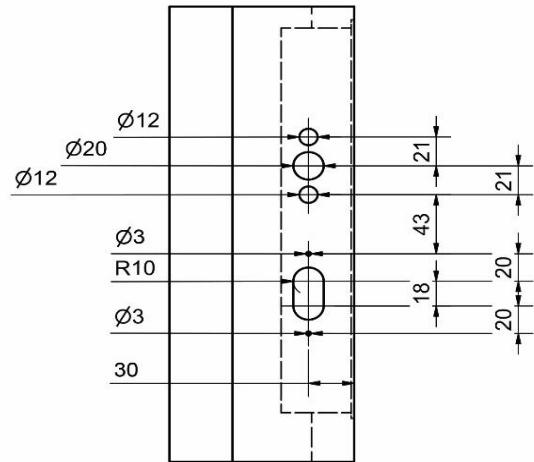
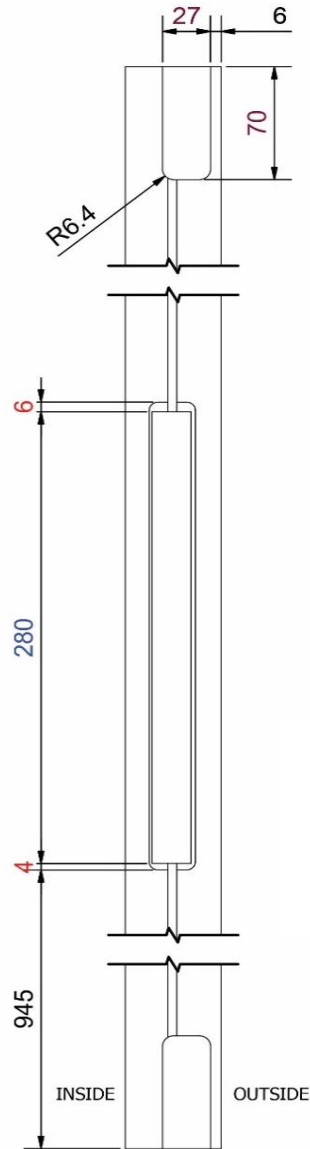
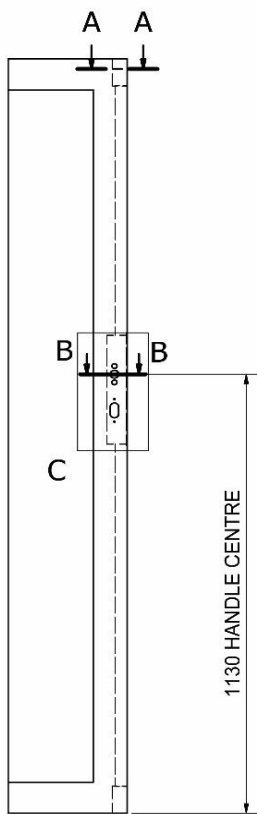
LOCK ROD & PIN LOCATION BLOCK



B-B (1:2)

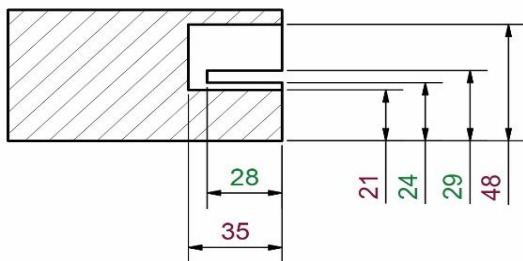
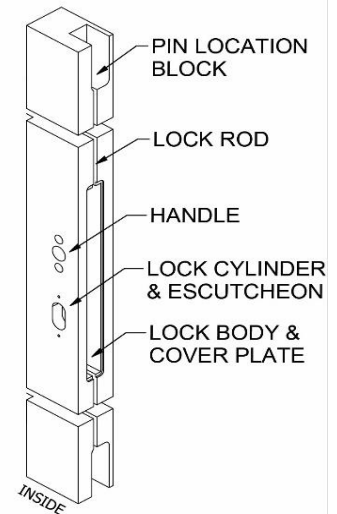
LOCK ROD, LOCK BODY & COVER PLATE

NON MORTICE INWARD OPENING ROUTING DETAIL



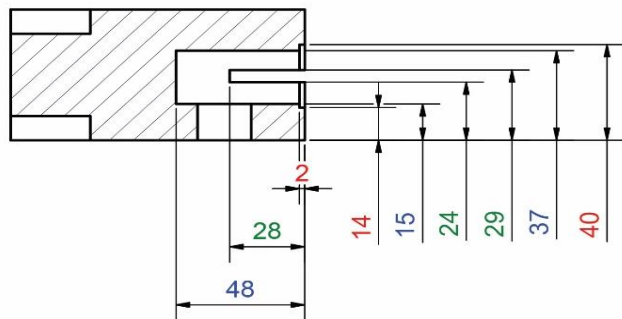
C (1 : 3)

HANDLE & LOCK CYLINDER W/ESCUTCHEON



A-A (1:2)

LOCK ROD & PIN LOCATION BLOCK

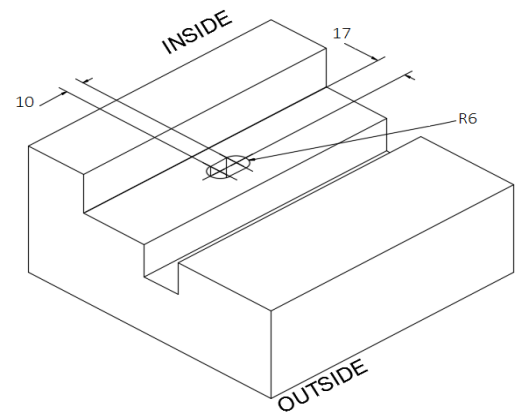
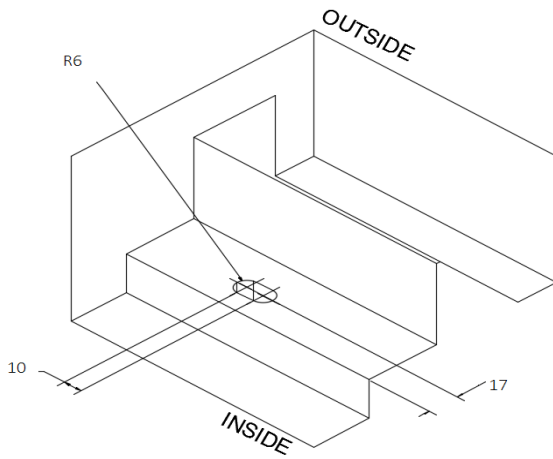


B-B (1:2)

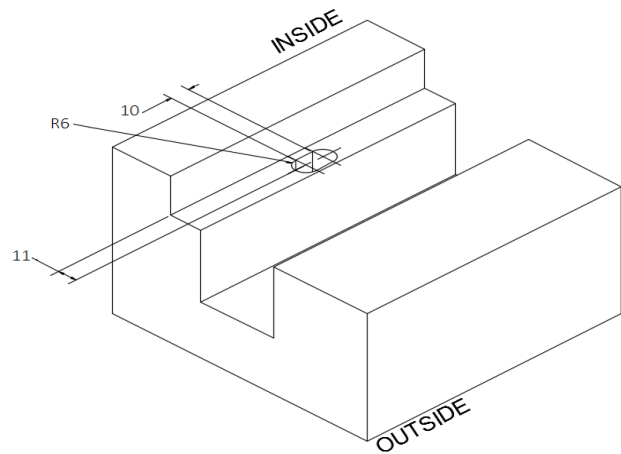
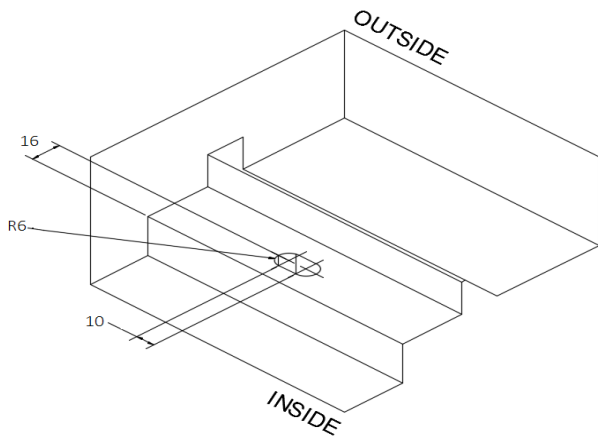
LOCK ROD, LOCK BODY & COVER PLATE

ROUTING DETAIL

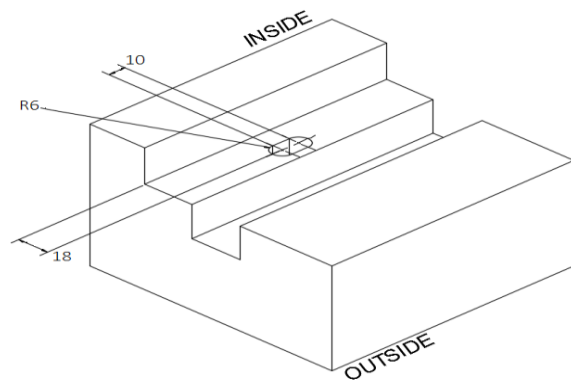
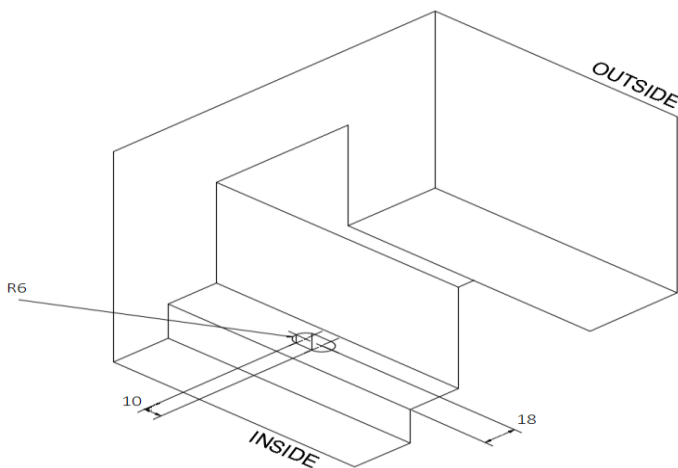
Securefold 50 100 Keep Plates



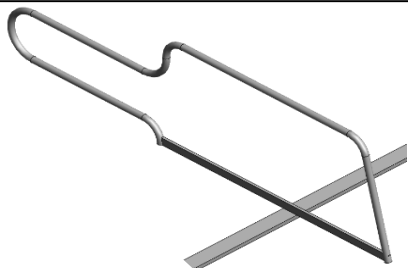
Securefold Bottom Rolling Keep Plates



Securefold 150 Keep Plates



STEP BY STEP INSTRUCTIONS



Calculation

Max door height* – actual door height = lock rod reduction

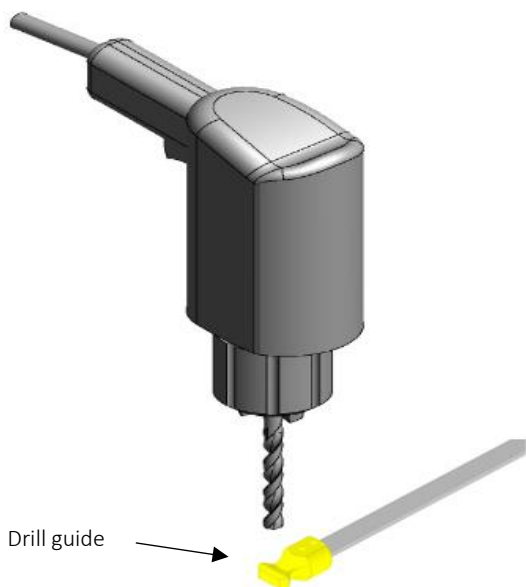
* Max door height is system specific, please see below:

Securefold 100 = 3300mm

Securefold Bottom Rolling = 3000mm

Securefold 150 = 4000mm

Step 2: Using drill guide, drill 2 x Ø3.0.



Step 3: Attach connecting pin and secure screws with thread lock adhesive.

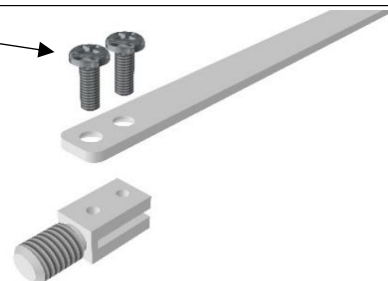
Non Mortice Version

M4 x 12
Countersink
Screws



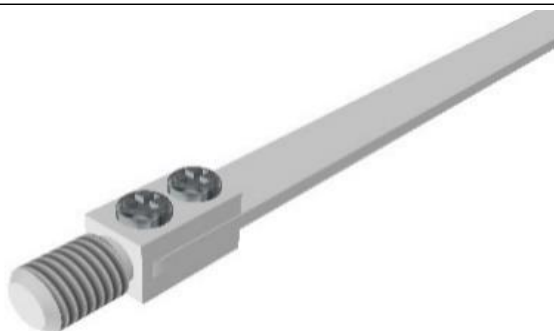
Mortice Version

M4 x 12
Countersink
Screws

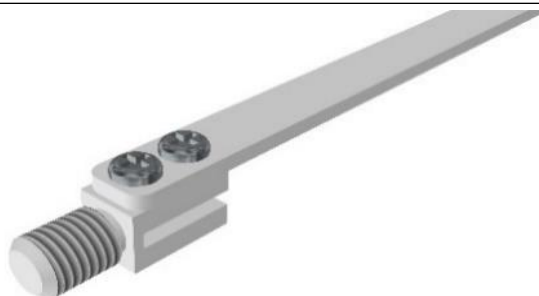


Step 4: Once your hardware looks like the below, move onto step 5.

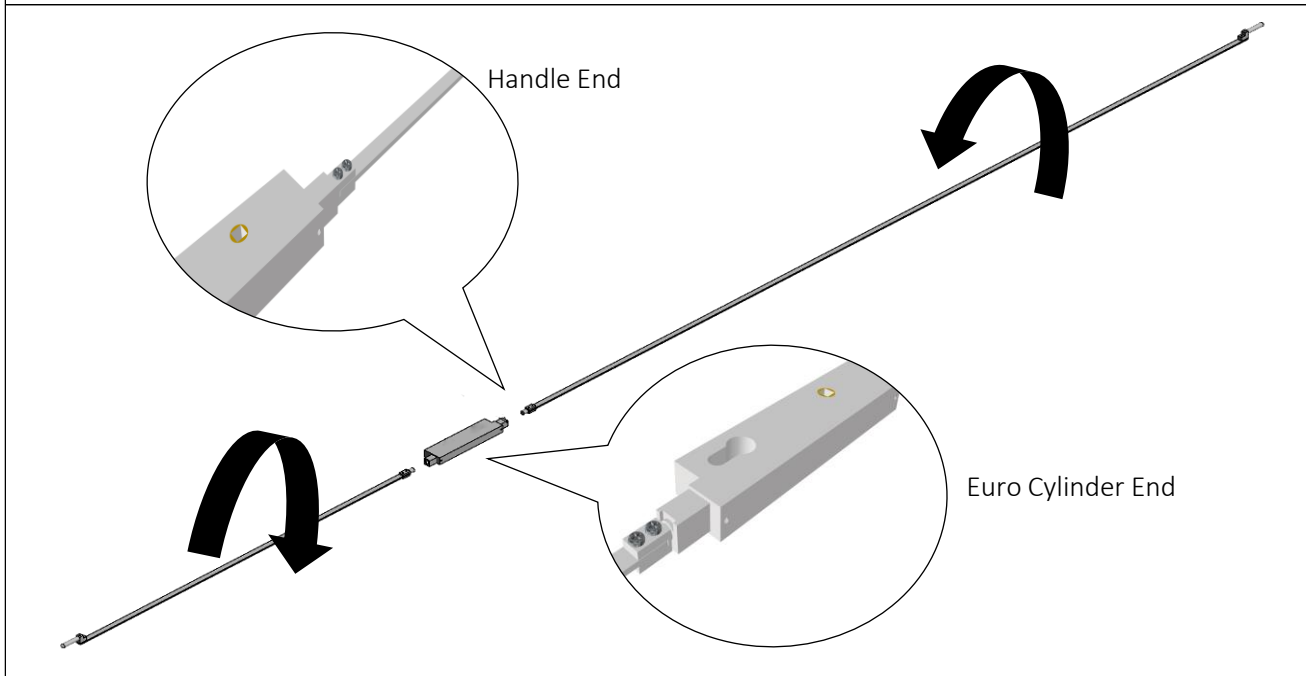
Non Mortice Version



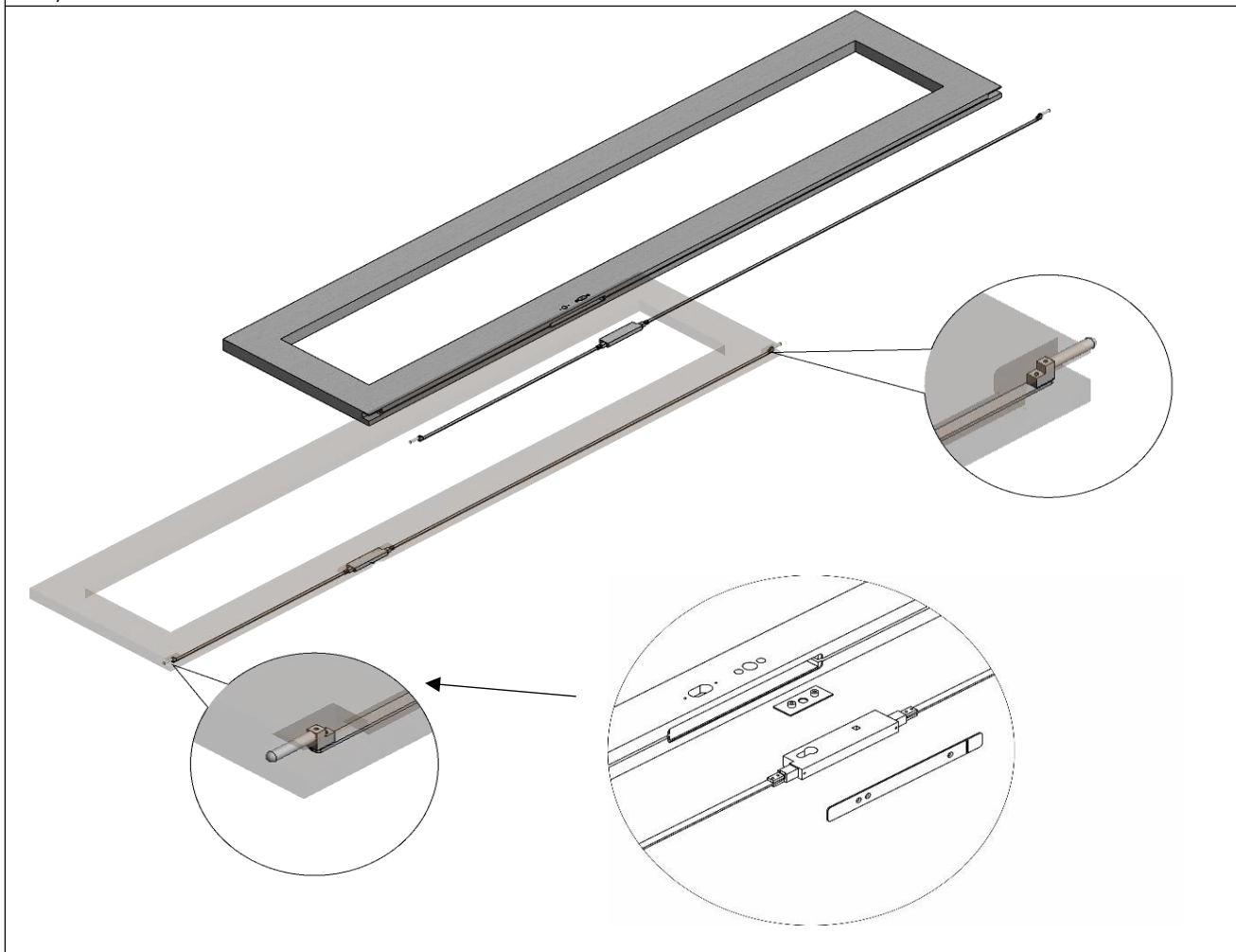
Mortice Version



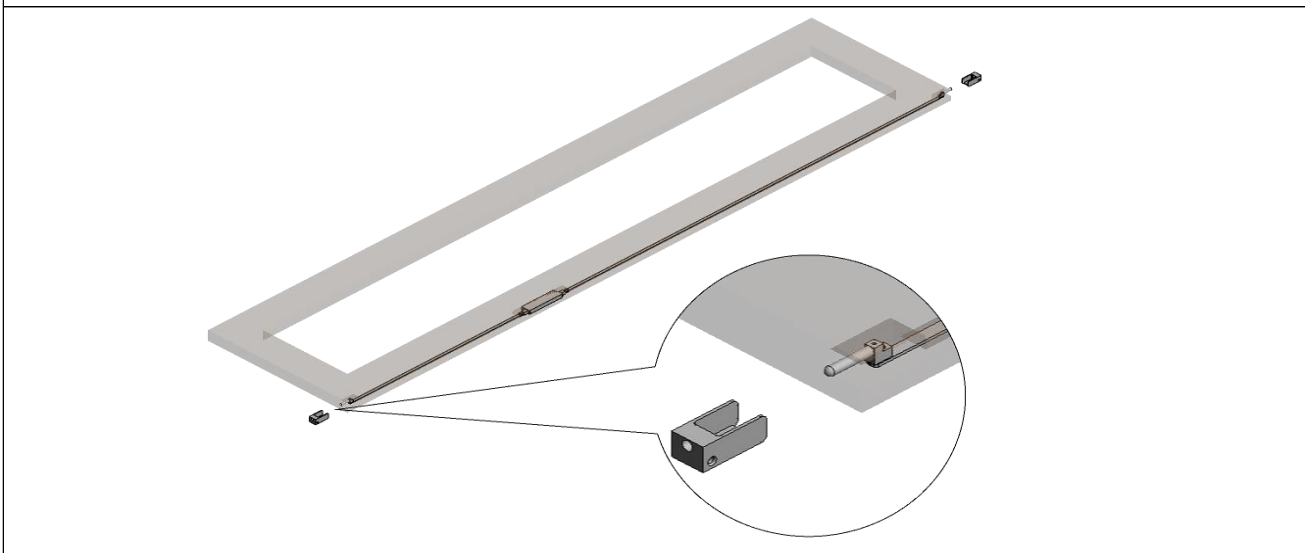
Step 5: Screw lock rods to lock box. The short bottom lock rod attaches to the euro lock end of the lock box and the top lock rod (which is cut to length) attaches to the handle end of the lock box.



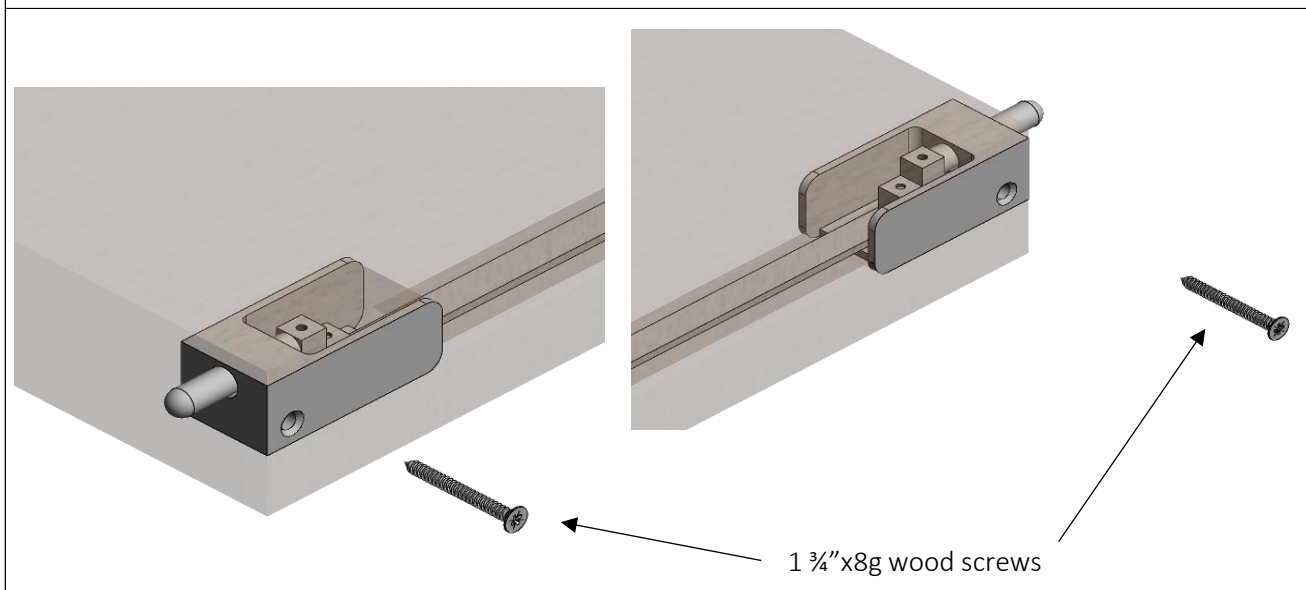
Step 6: Insert assembly into routed door edge. Push handle backing plate into position prior to inserting lock body into door.



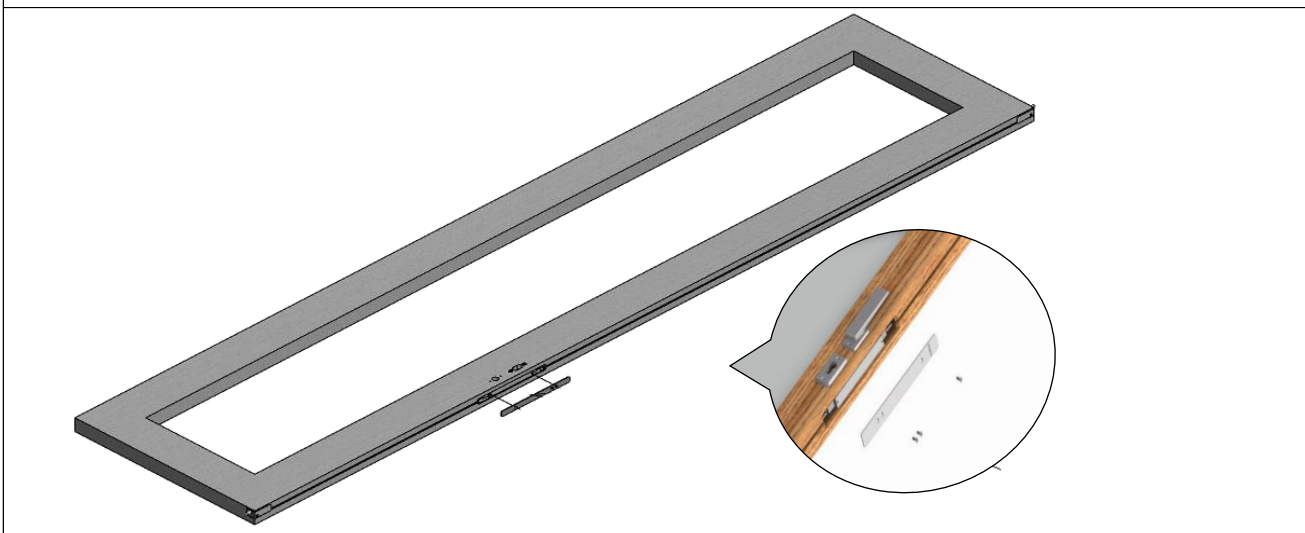
Step 7: Position shoot bolt blocks in both ends.



Step 8: Secure blocks with screws.

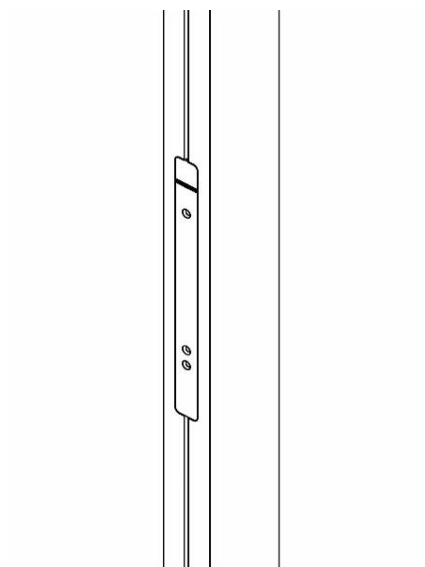


Step 9: Attach cover plate using M4x9 countersunk head screws.



FITTING OF ACCESSORIES

Step 10: If using our routing cover strip, please cut to length and insert coloured rubber seal into lock rod.



Step 11: Fit handle and cylinder plate with suitable fixings.



P C Henderson Ltd, Durham Road, Bowburn, Co. Durham, DH6 5NG, UK

UK Sales

t: +44 (0) 191 377 7345

e: sales@pchenderson.com

w: www.pchenderson.com

Export Sales

t: +44 (0) 191 377 7346

e: international@pchenderson.com

w: export.pchenderson.com

664265

LVL07

Jan-21