

# TANGENT ROUND THE CORNER 301 & 301H

HENDERSON

55kg 70kg Wood Metal Interior Exterior

Top hung system for round the corner applications

### Overview

Tangent Round the Corner is a robust top-hung door system for round the corner residential, commercial or light industrial wooden or metal doors. Catering for doors weighing up to 55kg and 70kg, the system can accomodate panelled, flushed or glazed doors.

The system is ideal for applications whereby a bunched unit of parked panels would be impractical. Only 3 to 5 panels should be hinged in 1 unit, but any number of untis may be used to suit panels from a minimum width of 711mm to a maximum of 900mm.

### Features and Benefits

- Caters for metal and wooden doors weighing up to 55kg and 70kg each
- Doors stack clear of the opening and park along the adjacent side wall
- Ideal for applications where a bunched unit of parked leaves would be impractical
- Doors can slide to one or both sides and can cover any width of opening by using any number of units on a single track



Wooden Doors

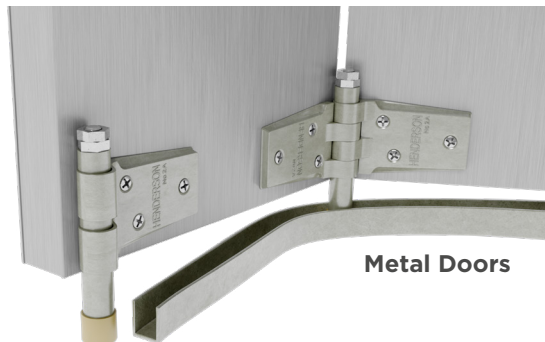
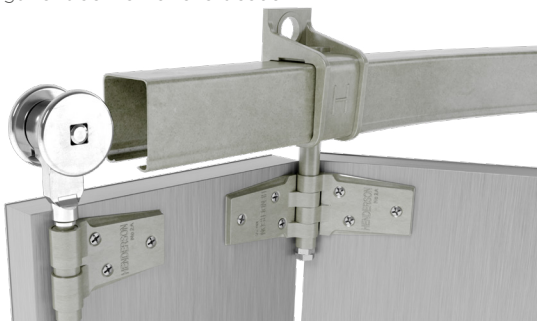
### Product and Door Specification

Product	Min Door Width	Max Door Width	Door Thickness Range	Max Door Weight
Tangent RTC 301	711mm	900mm	45 - 55mm	55kg
Tangent RTC 301H	711mm	900mm	45 - 55mm	70kg

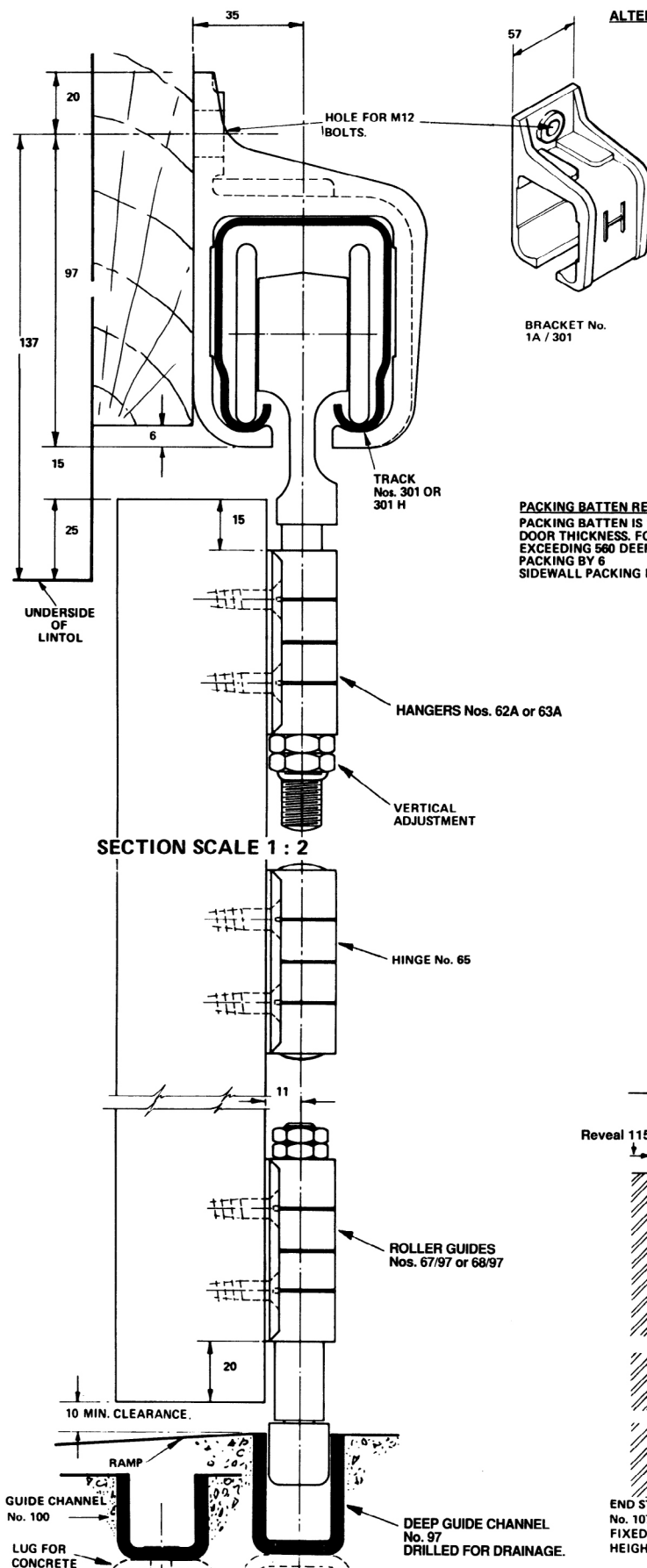
### Component Specification

Component	Description	Short Code	
		301	301H
Track	Available in 2000, 2500, 3000, 4000, 5000 and 6000mm lengths	301/****	301H/****
Track Curves	For single doors x1 and for bi-parting doors x2	600B	600BH
Brackets Fix every 900mm max and at track joints and curves. Fix jointing brackets/sleeve at both curved ends	Face fixed, single	1A/301	
	Face fixed, single jointing	1AX/301	
	Face fixed, jointing	4RX/301TS	
	End clip	1A/301EC	
Hangers 1 for every 2 door leaves	Intermediate hanger	62A	
	End hanger	63A	
Hinges 3 in height	Backflap hinge	65	
Guides 1 per door joint and end door	Intermediate guide	67/97	
	Intermediate guide spindle	67/97SP	
	End guide	68/97	
Channel	Galvanised steel channel in 2000, 2500, 3000, 4000 and 6000mm lengths (100 channel not available in 6000mm)	97/****	100/****
Channel Curve	Galvanised steel channel curve	601/97	601/100
Stops	Zinc plated steel door stop with single rubber buffer	109	
	Zinc plated steel door stop with double rubber buffer	107	

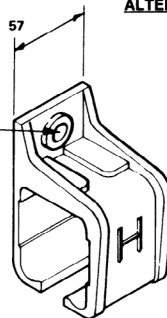
\*\*\*\* Replace by length of track for full short code



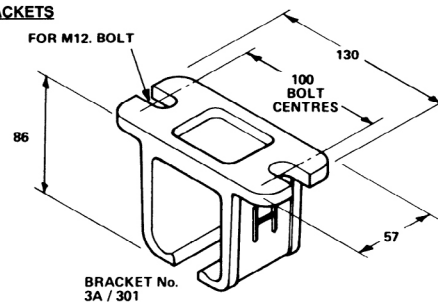
Metal Doors



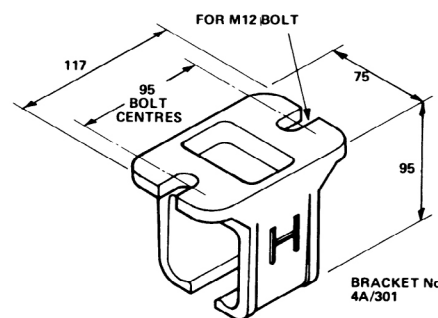
#### ALTERNATIVE BRACKETS



BRACKET No. 1A / 301



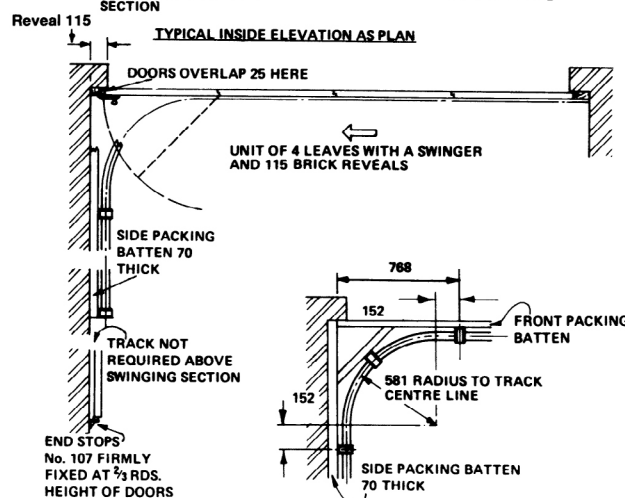
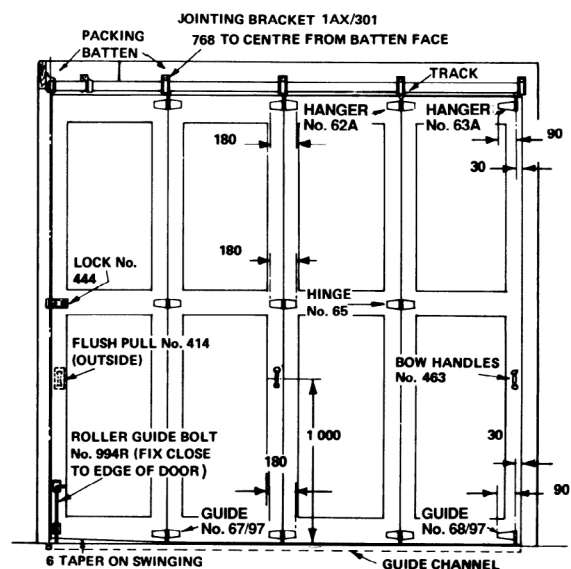
BRACKET No. 3A / 301



BRACKET No. 4A/301

**PACKING BATTEN REQUIREMENTS**  
PACKING BATTEN IS 16 LESS THAN DOOR THICKNESS. FOR REVEALS EXCEEDING 560 DEEP, INCREASE PACKING BY 6  
SIDEWALL PACKING IS ALWAYS 70

SECTION SCALE 1 : 2



For further information, please contact us on:

**UK Sales**

T: +44 (0) 191 377 7345

E: [sales@pchenderson.com](mailto:sales@pchenderson.com)

W: [www.pchenderson.com](http://www.pchenderson.com)

**Export Sales**

T: +44 (0) 191 377 7346

E: [international@pchenderson.com](mailto:international@pchenderson.com)

W: [export.pchenderson.com](http://export.pchenderson.com)