

MAJESTIC

For bottom rolling straight sliding doors weighing up to 270kg



Majestic is a durable system perfectly suited for heavy high class joinery installations weighing up to 270kg. Majestic features a concealed bottom roller enabling the weight of the door to be transferred to the bottom track, making it ideal for applications where there is not enough structural support to carry a top hung system.

NOTE: At least 175mm depth at the bottom of the door must be available to accommodate the concealed bottom rollers when choosing this system.

Product Information

Product	Door Thickness Range	Max. Door Weight
Majestic	44 – 57mm	270kg

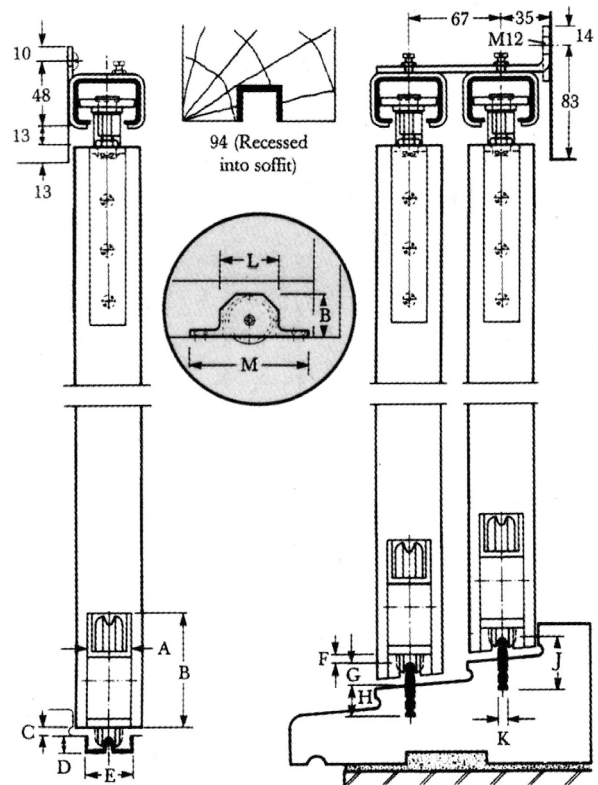
Product Specification

Component	Description	Short Code
Top Guide Channel Twice the width of doors	Galvanised steel top guide channel with safety lip in 2000, 2500 and 3000mm	900/****
Brackets Fix every 900mm max. and at channel joints	Face fixed single track bracket	1/900
	Soffit fixed single track bracket	3/900
	Face fixed double track bracket	5/900
Top Guide Rollers 2 per door	Top guide rollers with concealed edge fixings and double adjustable anti-rattle rollers	203/900
	Top guide roller for corner fixing	54/900
Bottom Rollers 2 per door	Brass wheel bottom roller with maintenance free roller bearing	916
Bottom Rail	Brass bottom rail available in 1500 and 3000mm lengths	917/****
	Brass recessed bottom rail - 3000mm length	817/3000
Stop	Zinc plated steel door stop with single rubber buffer	109
	Stainless steel door stop with single rubber buffer	109/SS
	Zinc plated steel with double rubber buffer	107

**** Replace by length of track for full short code



SECTION DETAILS



Dimensions

A	B	C	D	E	F	G	H	J	K	L	M
32	82	6	13	35	6	16	22	38	8	111	229

Hardware

Guide Channel



900

Brackets



1/900



3/900



5/900

Top Guide Rollers

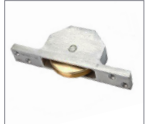


203/900



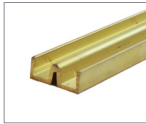
54/900

Bottom Rollers



916

Bottom Rail



917

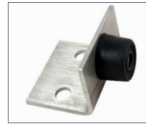


817

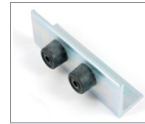
Stops



109



109/SS



107

Accessories



Round Flush Pull Set
(385/S) satin, also available in chrome, black and polished brass



Square Flush Pull Set
(53/S) satin, also available in chrome and black



Oval Flush Pull (144S)
satin, also available in black



Rectangle Flush Pull (125/S) satin, also available in chrome



Rectangle Flush Pull (400) satin, also available in stainless steel



Rectangle Flush Pull (414) aluminium, heavy duty



Lug for Fixing Rails into Concrete (917/918LUG)



Cup for Fixing Rails into Concrete (UNICUP)

View our full range of accessories on page 136