



# The Husky Range Brochure

Sliding and Folding Door Hardware

**HENDERSON**



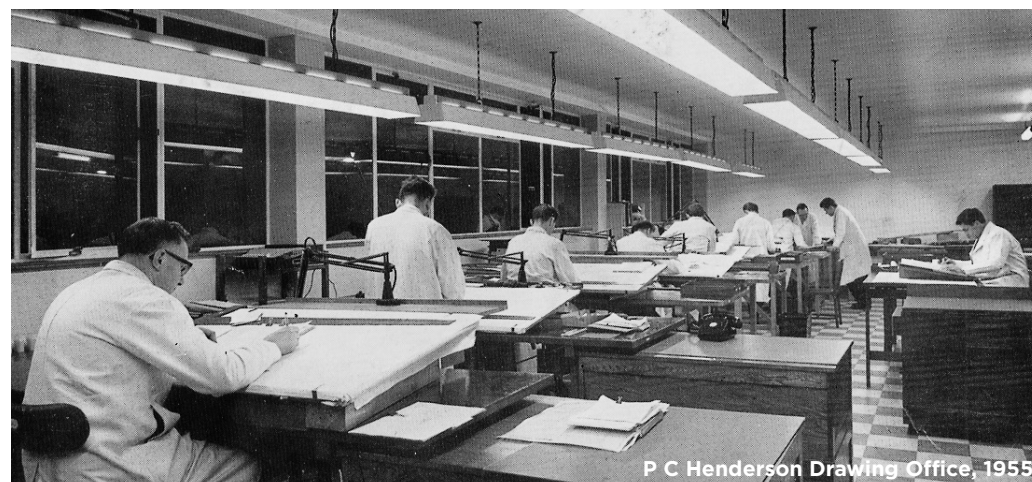
# Our Heritage

## Research, Design & Development

With over 100 years' experience in the design and development of sliding and folding door hardware systems, our continual improvement ethos runs through everything we do. As a registered member of Made in Britain, the official trademark for British Manufacturing, our products can be seen in a wide variety of residential, commercial and industrial applications across the world.

All our products are rigorously tested in our on-site, purpose built testing facility in excess of 100,000 cycles, to maintain our market leading position and ensure our products are built to last. As a result, we offer a 10 year manufacturer's warranty on all sliding and folding products.

Certified to ISO 9001, our manufacturing centre of excellence ensures all aspects of each door hardware system we deliver is of the very highest quality. With an enviable reputation in the market, our quality processes and procedures underpin our business running through production, customer support, product design and technical specification.



P C Henderson Drawing Office, 1955

Our customer service and technical support team are always on hand to offer advice for your door hardware project and have exceptional product knowledge and capability.

We deliver projects across a range of sectors to customers globally and as such can provide advice for the most complex and ambitious of projects.

The team can support at any stage of planning and specifying the system. We have also created a library of installation videos and fitting instructions to guide you through the installation process, which are accessible from our website.

## Specification & Support

# Husky Case Study

Ralpine Design are a modern design company based in Geneva, Switzerland - specialising in the design and construction of made to measure pieces of furniture, bespoke storage solutions, unique internal architecture elements as well as complex renovation projects.

## Requirement

Ralpine Design was approached by their client with a design brief to produce a library and display unit, surrounding a doorway separating the properties lounge and dining room. The client also wanted to close off the two rooms where necessary but equally open up the two rooms as one when required.

## Solution

The system needed to be durable as well as being able to confidently support doors weighing 25kg. With the ability to cater for doors weighing up to 100kg, it was decided that our Husky 100 sliding door system was the most suitable product to meet project requirements. The system was used to hold two bi-parting wooden doors on a 3000mm opening, utilising a face fixed aluminium track for added quality.

As the majority of the mechanism would be hidden by the unit, specifying a product that would cater for heavier doors, offered the benefit of a considerable service life and longevity.

## Why P C Henderson?

"The Husky 100 system was a dream to work with and allowed us to achieve the project brief perfectly. We pride ourselves on the quality of construction and the materials we use so it's extremely important to us that we have instilled confidence in the suppliers we work with", commented Rob Leeman at Ralpine Design.

"P C Henderson has a huge range of products to suit virtually any type of application. The product quality is exceptional, they're incredibly reasonably priced and with the backing of a fantastic customer service function - why wouldn't we use them!?"



# Introducing the Husky Range

The Husky Range is home to our industry leading sliding and folding hardware systems, which have been expertly designed, manufactured and tested in-house, to offer high-quality hardware for a variety of different projects.

For residential and commercial applications, our range of Husky sliding door systems are a great way to save space, open up rooms, increase natural light and provide easy access.

The latest addition to the range, Huskyfold 30, provides solutions for room dividers, partitions and wardrobes, creating flexible living and working environments and allowing an entire room to be opened up at ease.

## Range Overview

- Catering for sliding door weighing up to 120kg
- Catering for folding door weighing of up to 30kg
- Solutions for wood, metal and glass doors of varying thickness's
- Available for interior applications
- Easy-to-install
- Range of accessories available for Husky 120 Pro systems
- Designed, manufactured and tested in-house in County Durham, UK



# Product Matrix

The Husky Range Brochure aims to make product specification as easy as possible. As such, each product page contains a multitude of **product information and technical drawings** to help you find the right hardware solution for your project. The Husky range of systems are available in a **handy kit pack format** which contains all components required for installation, and can also be specified individually for bespoke projects.

Sliding					
Product	Application	Operation	Door Material	Max. Door Weight	Page No.
Husky Sliding 100	Internal	Top Hung	Wood / Metal	100kg	6
Husky 120 Pro	Internal	Top Hung	Wood / Metal	120kg	8
Husky 120 Pro Accessories	Internal	Top Hung	Wood	120kg	10
Husky 120 Pro Glass Conversion Kits	Internal	Top Hung	Glass	75kg or 100kg	12
Husky 120 Pro Telescopic	Internal	Top Hung	Wood	120kg	14

Folding					
Product	Application	Operation	Door Material	Max. Door Weight	Page No.
Huskyfold 30	Internal	Top Hung	Wood	30kg	16

Accessories	
Product	Page No.
Round Flush Pull Set	18
Square Flush Pull Set	18
Oval Flush Pull	18



# Husky Sliding 100

Versatile sliding system for wooden or metal doors weighing up to 100kg



Scan for the  
Installation  
Video



Providing solutions for a range of applications including sliding wardrobes, passage doors and room dividers, Husky 100 is an extremely versatile system. The hardware has been designed to cater for wooden or metal doors weighing up to 100kg and can be both face fixed or soffit fixed depending on the application.

Husky 100 is available in a variety of kit pack sizes to cater for varying door widths. Each kit is available with a choice of steel or aluminium track, with an anodised aluminium track also available upon request. For bespoke projects, Husky Sliding 100 can be specified by individual components, contact P C Henderson for more information.

For bi-parting door applications, a one door fittings kit should be purchased.

For a more professional system, please see our new Husky 120 Pro hardware on Page 8.

## Product Specification

Product Code		Track Length	Max. Door Width	Door Thickness Range	Max. Door Weight
Steel Track*	Aluminium Track*				
H100/15	H100/15A	1500mm	800mm	20 - 50mm	100kg
H100/18	H100/18A	1800mm	950mm	20 - 50mm	100kg
H100/20	H100/20A	2000mm	1050mm	20 - 50mm	100kg
H100/24	H100/24A	2400mm	1250mm	20 - 50mm	100kg

\* Anodised aluminium track available upon request

## Kit Contents

Component	Quantity	Product Code	
		Steel Track	Aluminium Track
Track	1	280/****	280A/****
Face Fixed Jointing Brackets	2	-	281AX
Faced Fixed Brackets	5 or 8	281	281
Hangers*	2	284	284
Guide	1	102N	102N
Clip Stop	1	601H	601H
Track Stop	1	287	287

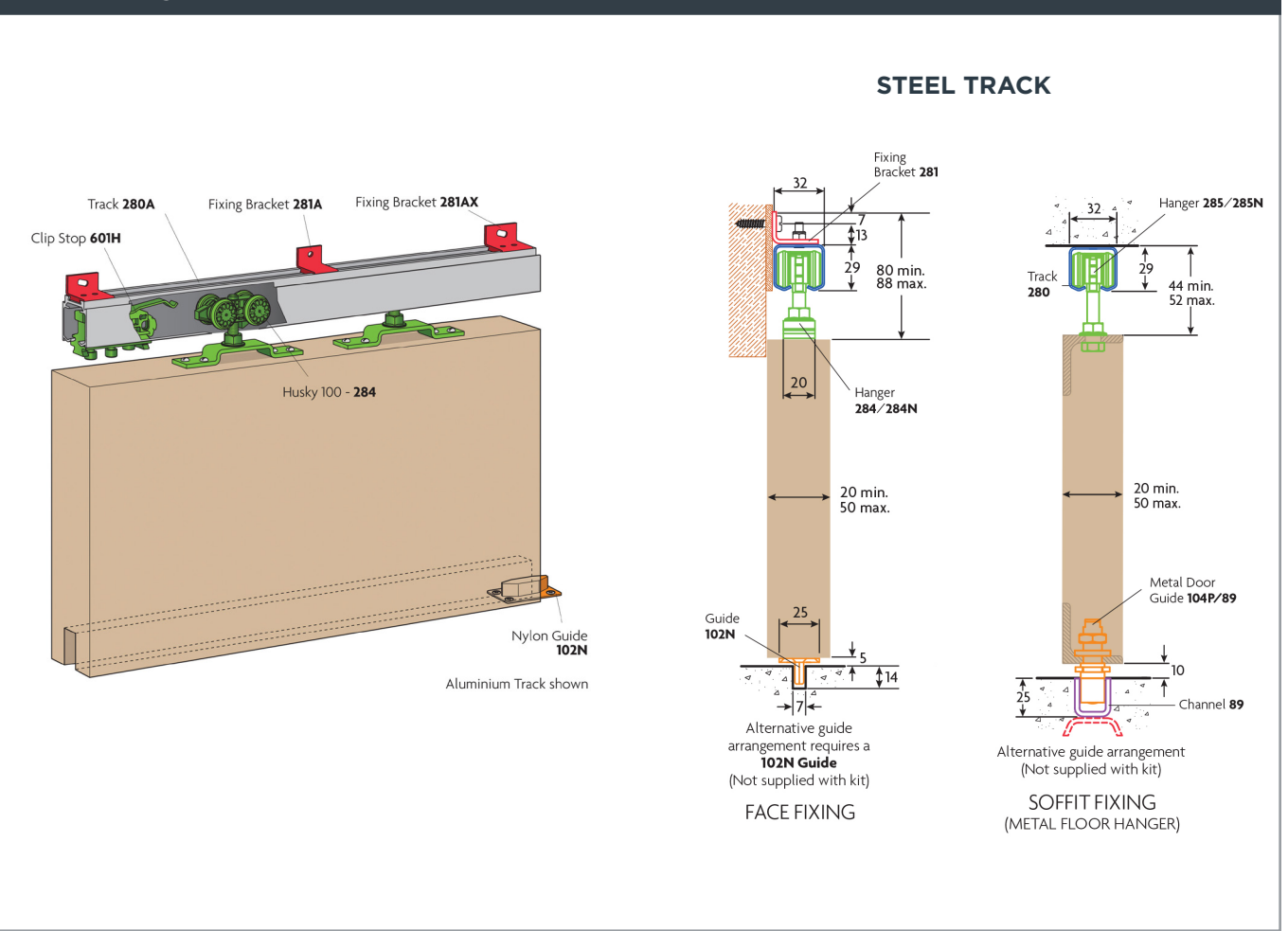
\*\*\*\*Replace by length of track for full short code

\*For metal doors, 285 hangers must be specified.

## Optional Accessories

Component	Product Code
1 Door Fittings Kit	H100
Hanger for Metal Doors	285

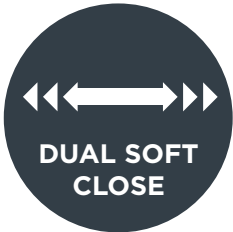
## Product Diagrams





# Husky 120 Pro

High performing, professional sliding door system for wooden or metal doors weighing up to 120kg



Husky 120 Pro is a high performing, professional level sliding system ideally suited to sliding wardrobes, passage doors and room dividers. Catering for wooden and metal doors weighing up to 120kg, the system has been designed with the customer in mind to offer an exceptionally smooth running system which also boasts easy installation.

The unique design of the track and hangr assembly allows for easier hardware maintenance, and the face fixed brackets offer a discreet finish. Combined with high quality components for low initial friction, Husky 120 Pro is an incredibly robust and durable system.

Husky 120 Pro is available in kit pack format, providing flexibility for a variety of door widths and can be face fixed or soffit fixed to suit your application. For bi-parting door applications, a fittings kit can be purchased. Alternatively, Husky 120 Pro is also available as individual components to enhance the flexibility of the system.

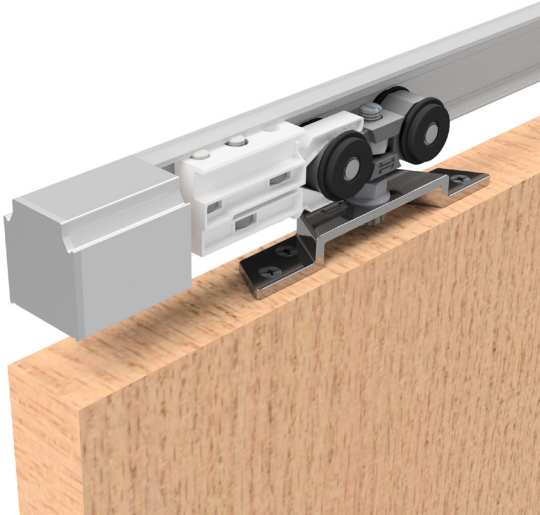
Your system can be further enhanced with a range of accessories including Dual Soft Close, Compact 120, Simultaneous Action, and SnapFit fascia, please see page 10 for more details. For glass panels, see page 12.

Product Specification				
Product Code	Track Length	Max. Door Width	Door Thickness Range	Max. Door Weight
HP120/15A	1500mm	800mm	20 - 45mm	120kg
HP120/18A	1800mm	950mm	20 - 45mm	120kg
HP120/20A	2000mm	1050mm	20 - 45mm	120kg
HP120/25A	2500mm	1250mm	20 - 45mm	120kg
HP120/30A	3000mm	1500mm	20 - 45mm	120kg

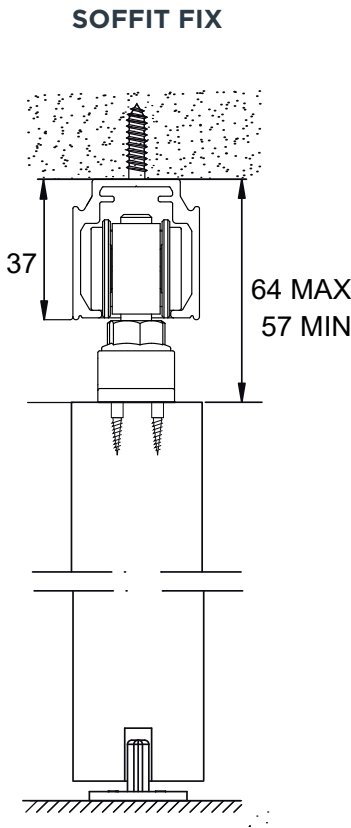
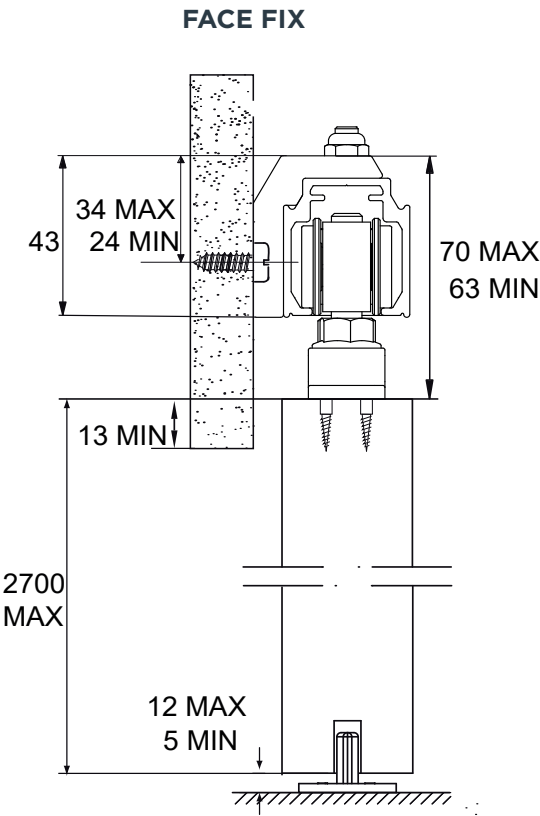
Kit Contents		
Component	Quantity	Product Code
Track - 1500, 1800, 2000, 2500, 3000, 4000 and 6000mm	1	280HP/**AN
Hangers	2	284HP
Wall Brackets	4	281HP
End Caps	2	280EC
Clip Stop	2	601HP
Guide	1	102N

\*\*Replace by length of track for full short code (For example, 1500mm = 15, 1800mm = 18)

Optional Accessories	
Component	Short Code
1 Door Fittings Kit	HP120
Hanger for Metal Doors	285HP



## Product Diagrams



# Husky 120 Pro Accessories

Optional accessories to enhance your Husky 120 Pro Kit

## Husky 120 Pro Dual Soft Close

For sliding doors weighing up to 120kg



Suitable for wooden and metal sliding doors weighing up to 120kg, this newly designed dual soft close mechanism is for use with our Husky 120 Pro sliding door hardware system.

The dual soft close AND open prevents the door from slamming by gently decelerating the door and pulling it into its stationary position, increasing the overall longevity of the product.

The soft close comes pre-assembled and is easy to install. Once in the track, the unit is concealed.

Please note: Husky 120 Pro kit must be purchased in addition to the soft close.

Product Code	Door Width Range	Door Weight Range
SOFTHP/60	600 - 950mm	10 - 60kg
SOFTHP/120	600 - 950mm	60 - 120kg
SOFTHP/WD	950 - 2500mm	20 - 120kg



## Husky 120 Pro Simultaneous Kit

For sliding wooden doors weighing up to 120kg



For a maximum door weight of 120kg, this Simultaneous Action kit has been designed so that when one door is pulled, the other will open or close at the same time.

Suitable for wooden internal, bi-parting doors, the kit provides a solution for wider doorways, and connecting adjacent spaces together. As the doors work in unison, larger traffic flow can move between two rooms easily.

Featuring a polypropylene coated cable for quiet operation and a tension spring to ensure smooth running, the kit also comes complete with pulley wheels, and door brackets.

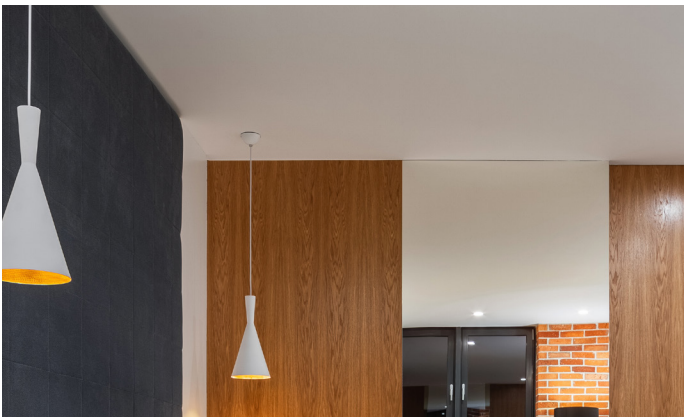
Please note: Husky 120 Pro kit must be purchased in addition to the simultaneous action.

Product Code	Door Thickness Range	Max. Door Width	Door Weight Range
SIMHP120	25 - 50mm	1250mm	25 - 120kg



## Compact 120

Low Headroom kit for wooden sliding doors weighing up to 120kg



The Compact 120 Low Headroom kit reduces the clearance between the track and top of the door to 2mm - making the hardware hardly visible.

With ease of installation and door adjustment as a priority, the system caters for doors weighing up to 120kg, with as low as 35mm door thickness and can be vertically adjusted to maximise door height.

Ideal for floor to ceiling door installations and applications where there is reduced door clearance, the kit is suitable for wardrobe doors and room dividers with one or more wooden doors.

Please note: Husky 120 Pro kit must be purchased in addition to the Compact 120 kit.

Product Code	Max. Door Width	Min. Door Thickness	Max Door Weight
CP120	1500mm	35mm	120kg



## SnapFit Fascia

Fascia for Husky 120 Pro sliding hardware



SnapFit is an aluminium fascia kit pack for use with Husky 120 Pro sliding door systems.

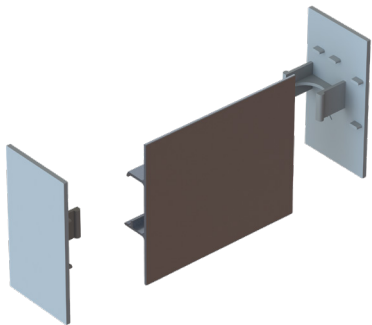
Designed for use in both soffit-fix and face-fix applications, SnapFit provides a modern, professional finish.

The easy-to-install fascia comes complete with end caps as standard and is available in 1800mm, 2000mm, 3000mm, 4000mm and 6000mm lengths.

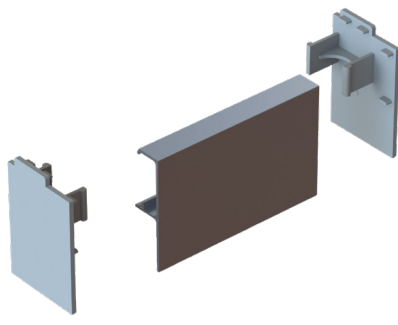
Please note: Husky 120 Pro kit must be purchased in addition to the fascia.

Product Code	Description
SFF/FF/****A 1800, 2000, 3000, 4000 & 6000mm	SnapFit Fascia - Face Fixed
SFF/SF/****A 1800, 2000, 3000, 4000 & 6000mm	SnapFit Fascia - Soffit Fixed

\*\*\*\*Replace by length of track for full short code



Face Fix Application



Soffit Fix Application



# Husky 120 Pro Glass Conversion Kits

For use with sliding glass doors weighing up to 75kg and 100kg

## Husky Pro Glass Patch Kit

For sliding glass doors weighing up to 100kg



The Glass Patch kit is the ideal solution for lightweight glass applications such as office doors and small domestic glass partitions.

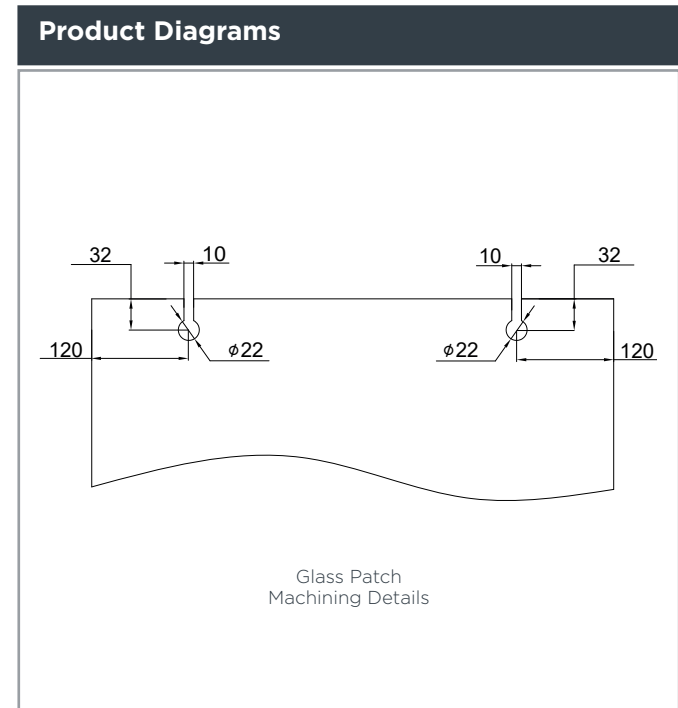
This conversion kit allows our Husky 120 Pro sliding door hardware to be used on 10mm or 12mm laminated hard glass panels weighing up to 100kg. The panels must be machined prior to installation.

Designed especially with aesthetics and functionality at the forefront, the patches are easy to install.

Please note: Husky 120 Pro kit must be purchased in addition to the glass patches.



Component	Product Code	Glass Panel Thickness	Max Door Weight
Husky Pro Glass Patch Kit	GP100	10 or 12mm	25 - 100kg
Guide	8-12/SN	8mm, 10mm or 12mm	-



# Husky Pro Glass Clamp Kit

For sliding glass doors weighing up to 75kg

COMING AUTUMN 2024!



The Husky Glass Clamp kit is suitable for lightweight glass applications in residential and light commercial settings such as offices doors and internal glass partitions.

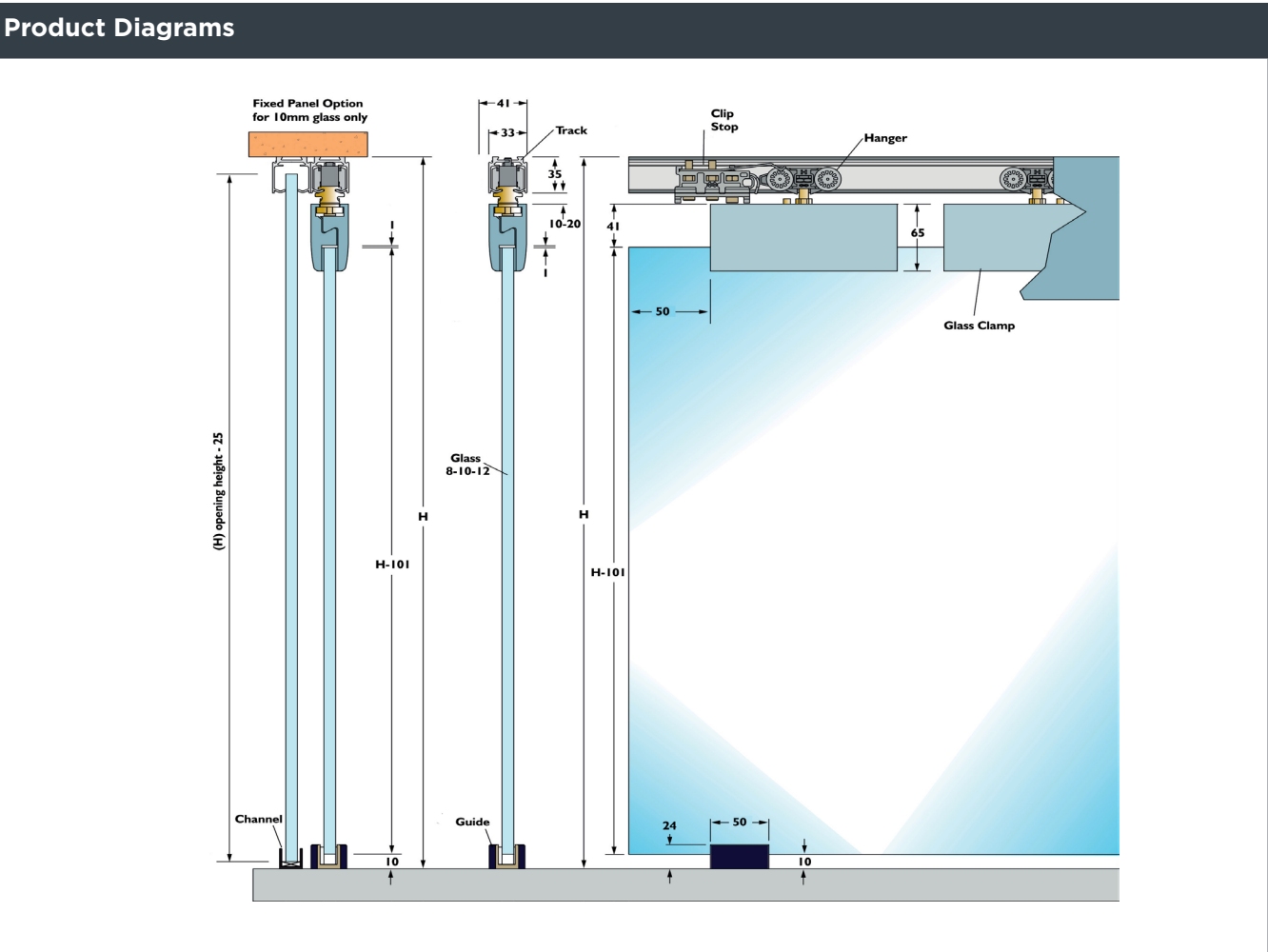
The product is extremely versatile, allowing the kit to be face fixed or soffit fixed without compromising on the functionality of the system.

The glass clamps fit to the glass panel, without the need to machine the glass prior to installing.

Please note: Husky 120 Pro kit must be purchased in addition to the glass clamps.



Component	Product Code	Max. Door Width	Min. Door Thickness	Max Door Weight
Husky Pro Glass Clamp Kit	8/HP/75	1250mm	8mm	75kg
	10/HP/75		10mm	
	12/HP/75		12mm	
Guide	8-12/SN	-	8mm, 10mm or 12mm	-



# Husky 120 Pro Telescopic

For sliding telescopic doors weighing up to 120kg



Husky 120 Pro Telescopic is designed using a toothed belt and pulley system, whereby the doors are linked together so that as one door is opened or closed, the others will follow at the required speeds.

The Telescopic range is ideal for wide openings in residential applications to create room dividers or partition doors. When open, the doors neatly stack to one or both sides of the opening, allowing for a clear walkway. Telescopic is available for various door configurations including options for bi-parting doors.

Please note: The track must be purchased in addition to the kit.

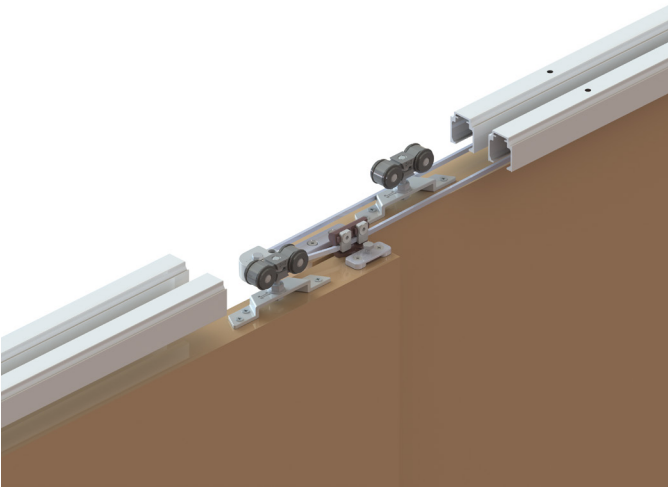


Product Kit Specification				
Product Code	No. Of Doors	Door Width Range	Door Thickness Range	Max. Door Weight
TELHP120/2	2	500 - 1200mm	32 - 47mm	120kg
TELHP120/3	3	500 - 1200mm	32 - 47mm	120kg
TELHP120/4SIM	4 (2+2)	500 - 1200mm	32 - 47mm	120kg

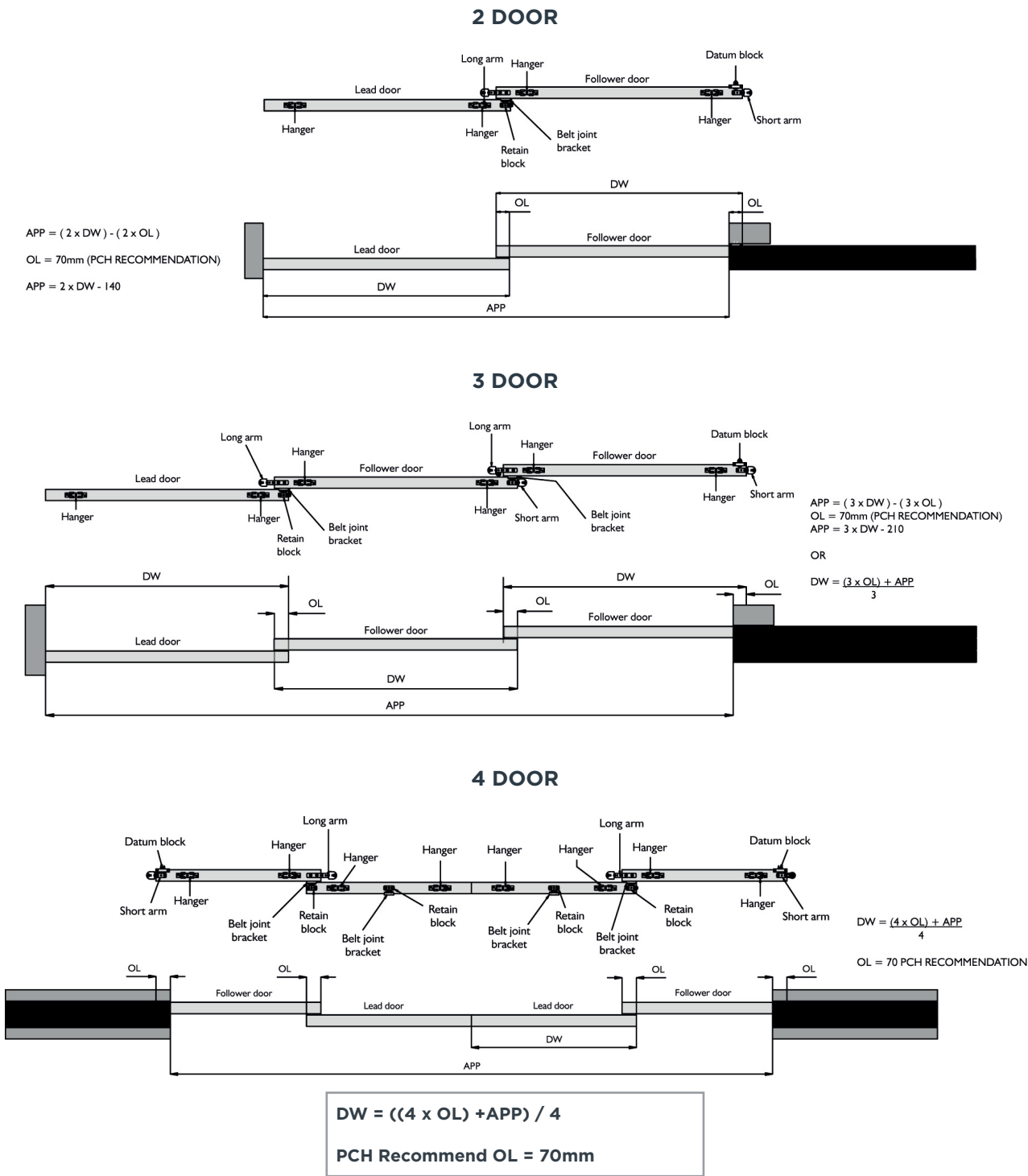
Track Specification - Must be purchased in addition to the kit	
Description	Product Code
Anodised aluminium track - 1500, 1800, 2000, 2500, 3000, 4000 and 6000mm	280HP/**AN

\*\*Replace by length of track for full short code (For example, 1500mm = 15, 1800mm = 18)

Kit Contents			
Component	2 Door Kit	3 Door Kit	4 Door Kit
Hanger	4	6	8
Clip Stop / Track Stop	2	2	2
Short Wheel Assembly	1	2	2
Long Wheel Assembly	1	2	2
Belt Retain Block	1	2	4
Pulley Wheel	-	-	2
Toothed Belt	3 metres	6 metres	16 metres
Datum Block	1	1	2
Fixed Floor Guide	1	1	2
Adjustable Floor Guide	1	2	2
Belt Clamp	3	6	10



## Product Diagrams





# Huskyfold 30

NEW!

For folding wooden doors weighing up to 30kg



Huskyfold 30 is an internal folding door solution, ideal for dividing rooms and flexible living areas. Both open and broken plan living can be achieved by easily stacking the doors to one or both sides of the opening to open up an area, and when closed, can separate two living areas into individual spaces. With no bottom channel required, the systems offers a seamless transition between spaces.

Designed with easy installation as a priority, Huskyfold 30 includes a convenient fast fix hanger assembly and spring loaded pivot, allowing for doors to be hung quickly. The system features hinge handles for easy closure of doors and high quality hinges offering a 2mm clearance.

Catering for doors weighing up to 30kg each, the system provides a range of configurations, as well as the option to specify a fittings kit when additional doors are required. We recommend purchasing flush bolts with this system, to secure the doors in place when closed.

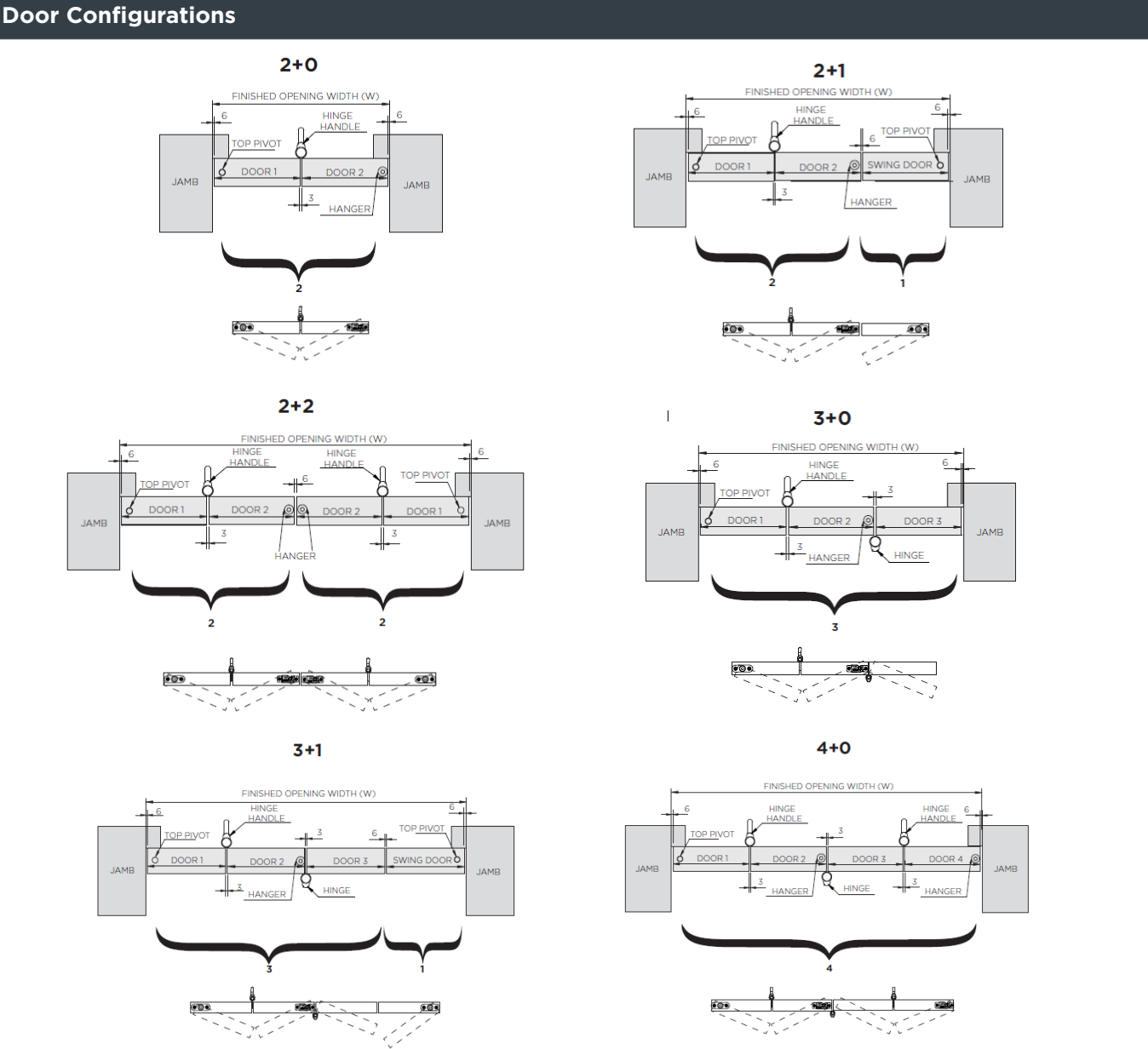


Product Specification					
Product Code	Door Configuration	Max. Door Height	Max. Door Width	Door Thickness Range	Max. Door Weight
HF30/2/0	2+0	2700mm	850mm	20-44mm	30kg
HF30/2/1	2+1	2700mm	850mm	20-44mm	30kg
HF30/2/2	2+2	2700mm	850mm	20-44mm	30kg
HF30/3/0	3+0	2700mm	850mm	20-44mm	30kg
HF30/3/1	3+1	2700mm	850mm	20-44mm	30kg
HF30/4/0	4+0	2700mm	850mm	20-44mm	30kg

Optional Accessories		
Component	Description	Product Code
Fittings Kits	For additional 2 doors	HF30/2/0/TL
	For additional 4 doors	HF30/4/0/TL
Flush Bolts	110mm flush bolt	FB110S

Flush Bolt Quantity Calculator for Door Configurations					
2+0	2+1	2+2	3+0	3+1	4+0
1	1	2	1	2	2

Kit Contents						
Component	Door Configurations					
	2+0	2+1	2+2	3+0	3+1	4+0
Track	1	1	1	1	1	1
Hanger Assembly	1	1	2	1	1	2
Top Pivot	1	2	2	1	2	1
Bottom Pivot	1	2	2	1	2	1
Hinge Handle	1	1	2	1	1	2
Hinge	2	2	4	5	5	7



Opening Size Formula		
Door Configuration	Opening Width	Opening Height
2+0	(DW x 2) + 15	DH + 70
2+1	(DW x 2) + 21	
2+2	(DW x 2) + 24	
3+0	(DW x 2) + 18	
3+1	(DW x 2) + 24	
4+0	(DW x 2) + 21	

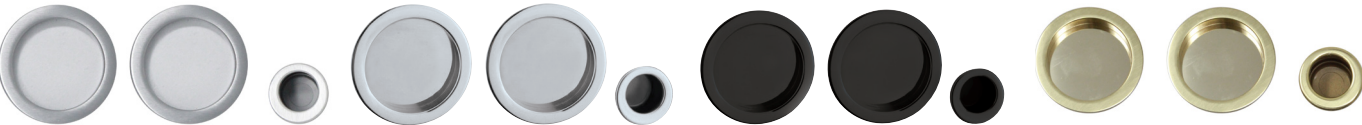
Key	
DW	Door Width
DH	Door Height

# Accessories

Enhance your sliding or folding door systems with our range of accessories.

COMING  
AUTUMN  
2024!

## Round Flush Pull Set



Product Information			
Product Code	Finish	Flush Pull Diameter	Finger Pull Diameter
FPR/S	Satin	57mm	41mm
FPR/C	Chrome		
FPR/B	Black		
FPR/PB	Polished Brass		

## Square Flush Pull Set



Product Information			
Product Code	Finish	Flush Pull Diameter	Finger Pull Diameter
FPS/S	Satin	53 x 53mm	41mm
FPS/C	Chrome		
FPS/B	Black		
FPS/PB	Polished Brass		

## Oval Flush Pull



Product Information			
Product Code	Finish	Height	Width
FPO/SS	Stainless Steel	144mm	44mm
FPO/CS	Chrome		
FPO/B	Black		
FPO/PB	Polished Brass		

# Why P C Henderson?

Based in County Durham, P C Henderson has been creating the highest quality sliding and folding door hardware for over 100 years.

Whether you require bespoke solutions for complex projects or handy kit packs for easy installation - we can help!

We have offices in the UK, Ireland, the Netherlands and China along with an extensive network of distributors and representatives across the globe - exporting to over 70 countries worldwide.

Our expert, in-house product designers use valuable customer feedback to continually adapt, enhance and add to our existing product range to make sure we meet and exceed customer expectations.

We pride ourselves on our exceptional customer service. The team here at P C Henderson are a group of knowledgeable, passionate and long standing individuals, with extensive experience working on projects of all sizes across the world.

With a technical sales department also on-hand, expert advice on all aspects of specification, installation and maintenance is available for our complete range of sliding or folding hardware.

# Contact Us

Wherever a sliding or folding door can work, we offer a solution!

To find out more and view our whole product range, visit our website:  
**[www.pchenderson.com](http://www.pchenderson.com)**

Our friendly customer service team can specify even the most complex and ambitious of projects:

**Telephone:** 0191 377 7345  
**Email:** [sales@pchenderson.com](mailto:sales@pchenderson.com)

Durham Road, Bowburn, Co. Durham, DH6 5NG,  
United Kingdom

ACCESSORIES





# HENDERSON



[www.pchenderson.com](http://www.pchenderson.com)

[sales@pchenderson.com](mailto:sales@pchenderson.com) | +44 0191 3777345

Durham Road, Bowburn, Co. Durham, DH6 5NG, United Kingdom

Part of ASSA ABLOY