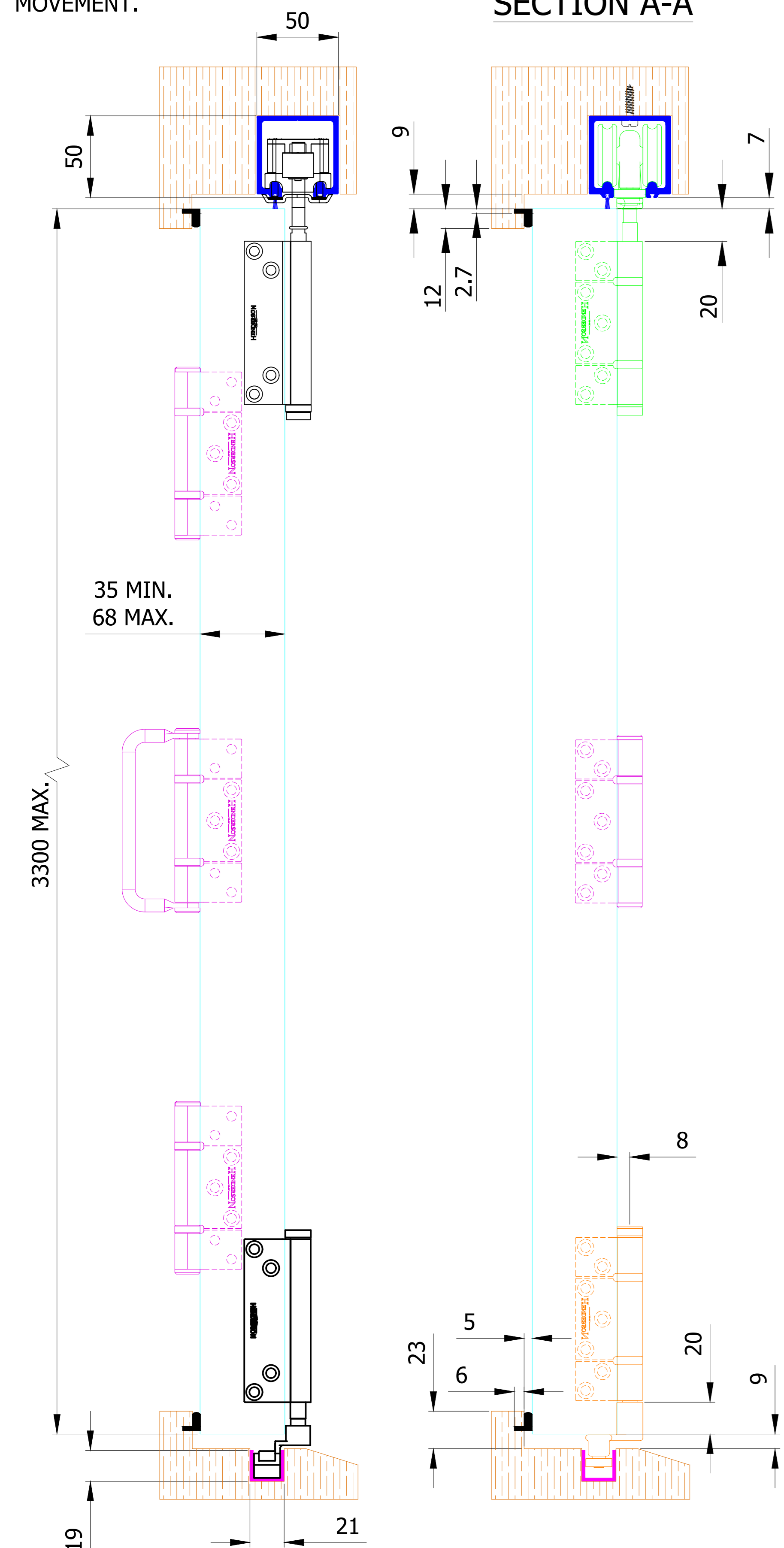


DIMENSION 50mm IS TRACK WIDTH.
ALLOW 1mm GAPS EITHER SIDE FOR
MOVEMENT.

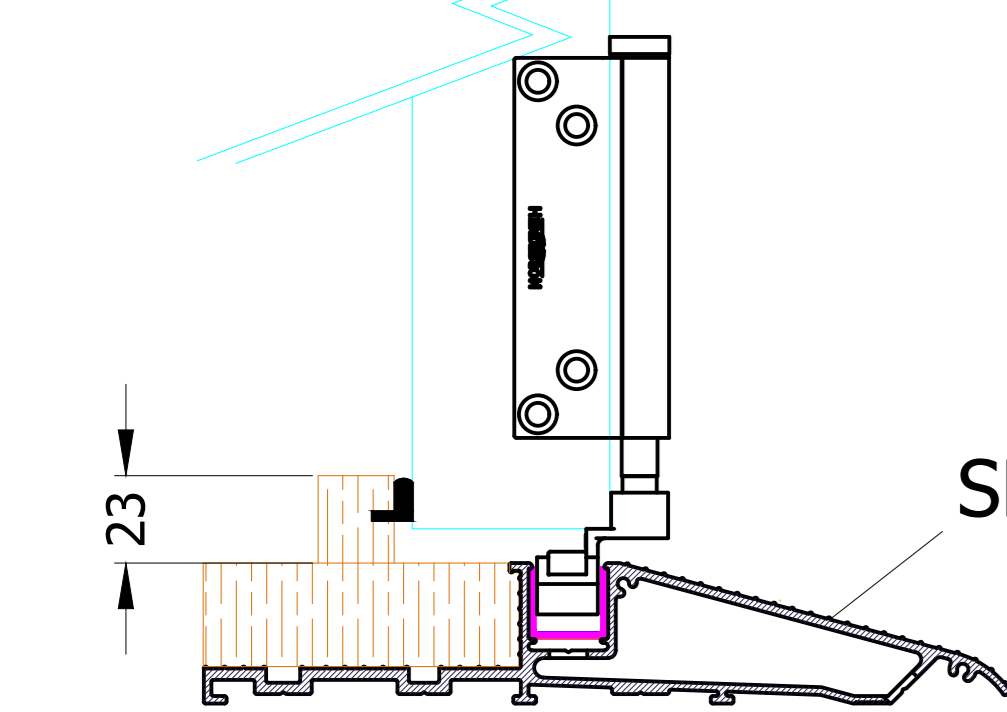
SECTION A-A



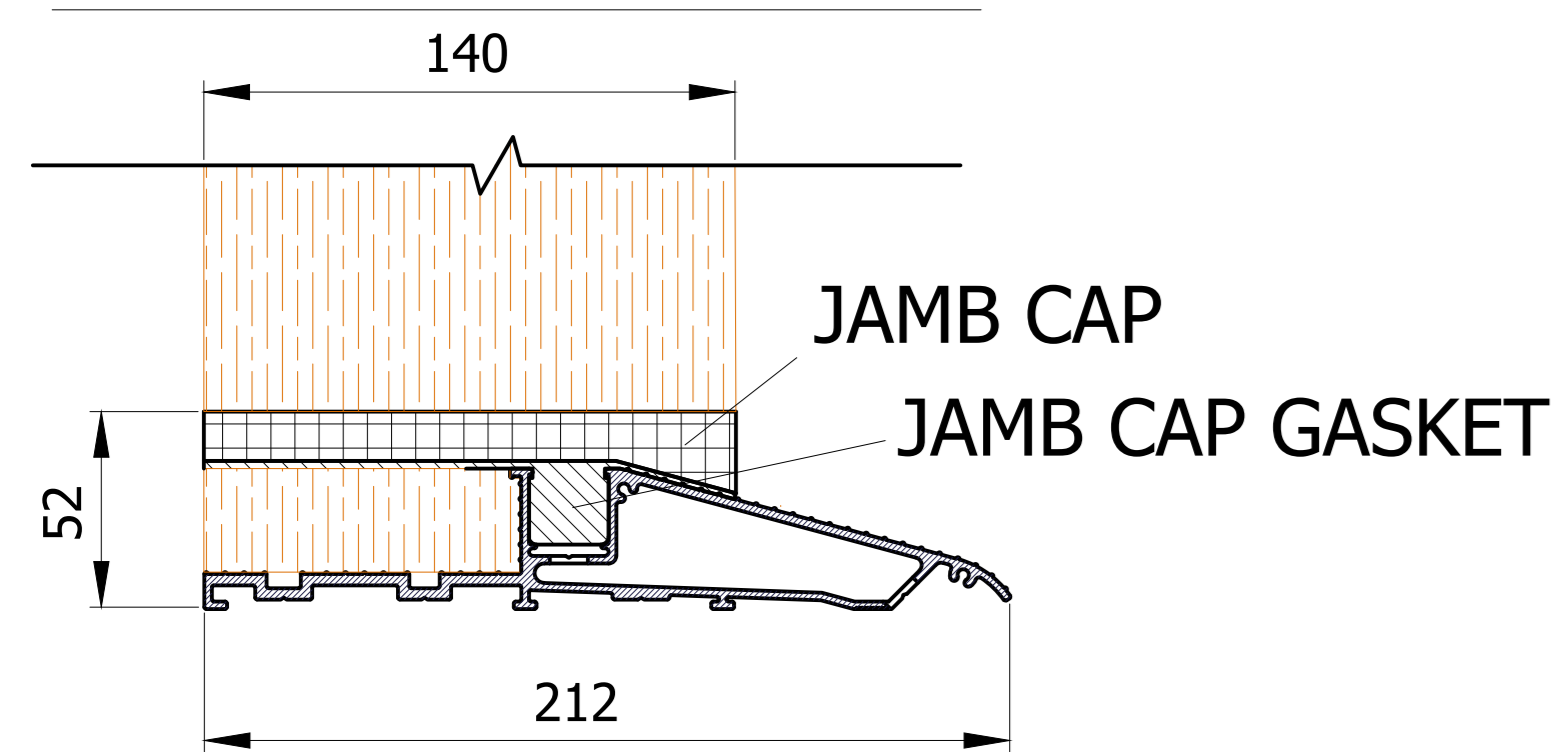
WHEN USED IN CONJUNCTION WITH THE ALUMINIUM SUPPORT CHANNEL 94SC, THE OUT DIMENSION BECOMES 23H X 25W.

OPTIONAL ALUMINIUM THRESHOLD

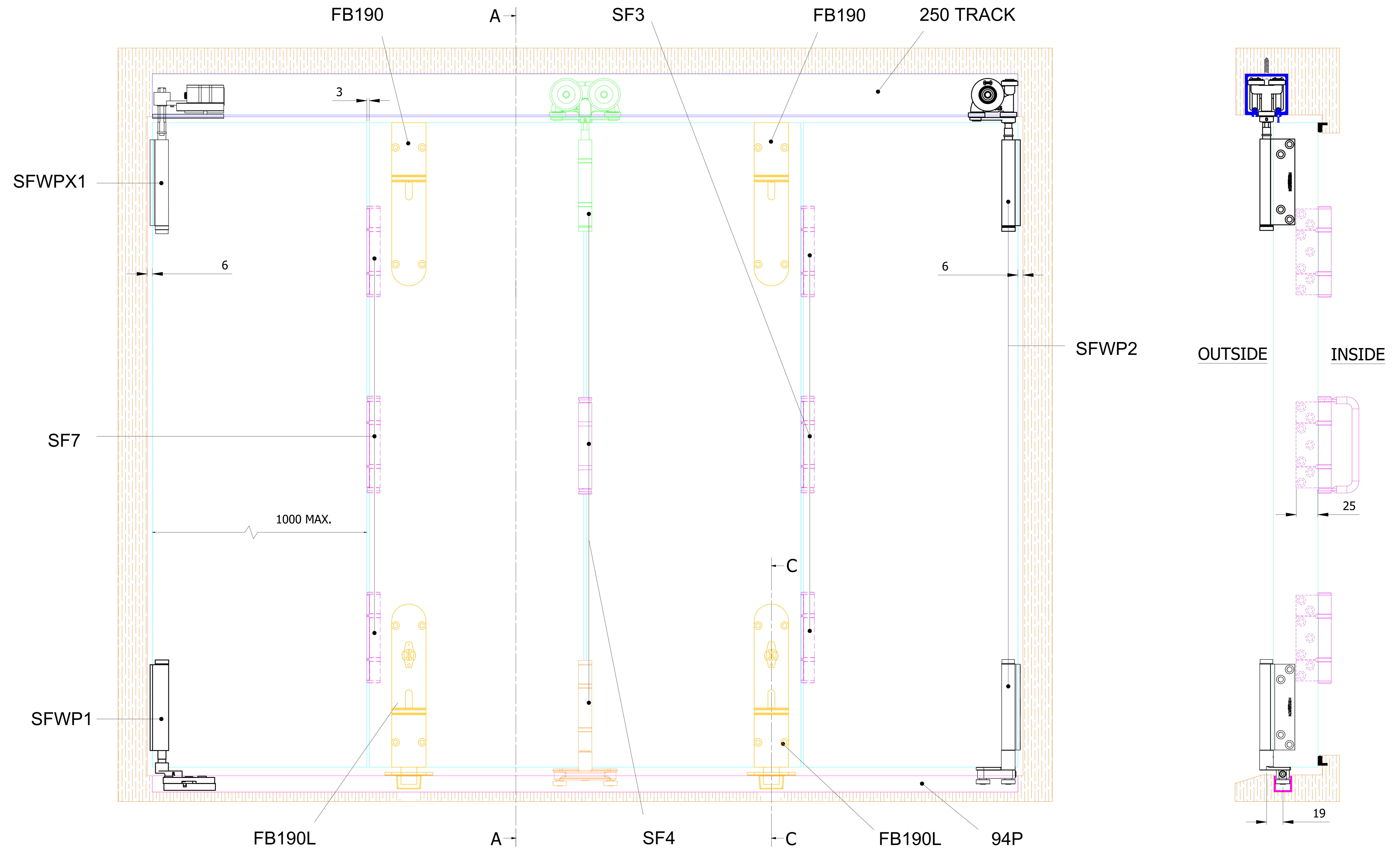
SF94T ALUMINIUM THRESHOLD



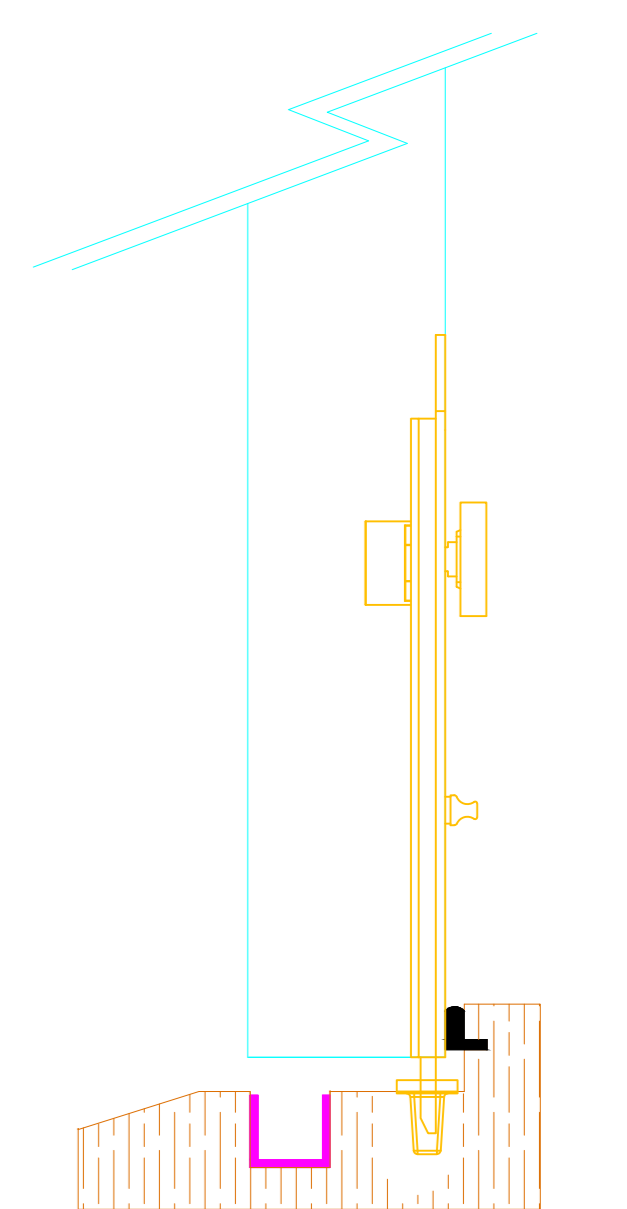
OPTIONAL JAMB KIT ASSY



ALTERNATIVE ALUMINIUM THRESHOLD COMES COMPLETE WITH 94P AND ENDCAPS AND IS PREDRILLED FOR DRAINAGE



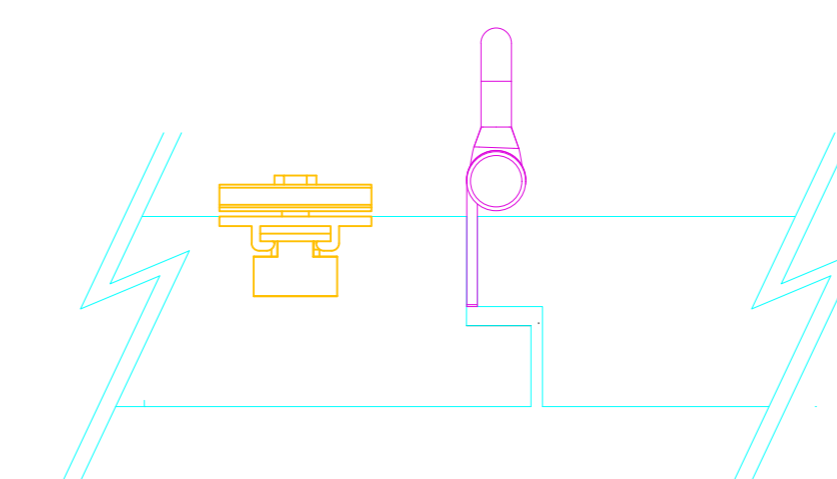
SECTION C-C



NOTES:

1. DRAWING IS FOR REFERENCE AND SUBJECT TO CHANGE WITHOUT NOTICE.
2. APPLICATION IS FOR EXTERNAL TIMBER FOLDING DOORS WEIGHT MAX 100Kg.
3. SQUARE EDGE DOORS ARE SHOWN, SYSTEM CAN BE USED ON REBATED DOORS - REBATE SHOULD BE OPPOSITE SIDE TO HARDWARE - SEE VIEW E.
4. REFER TO FITTING INSTRUCTIONS FOR ROUTING DETAILS REQUIRED
5. 190mm FLUSHBOLTS SHOWN ALTERNATIVE SIZES ARE AVAILABLE - 450 AND 600mm.
6. FOR DOORS BETWEEN 35-47mm THICK AT ALTERNATIVE TO THE SECUREFOLD FLUSHBOLT IS REQUIRED.
7. ALL DIMENSIONS ARE IN MILLIMETERS.

VIEW E: EXAMPLE REBATED DOOR



Description:	SECUREFOLD PRO
	OUTWARD OPENING 4+0
PCH-code:	SFWPX O/W 4+0
CAD-scale:	----
Drawing-size:	A0
Revision:	A

HENDERSON

www.pchenderson.com