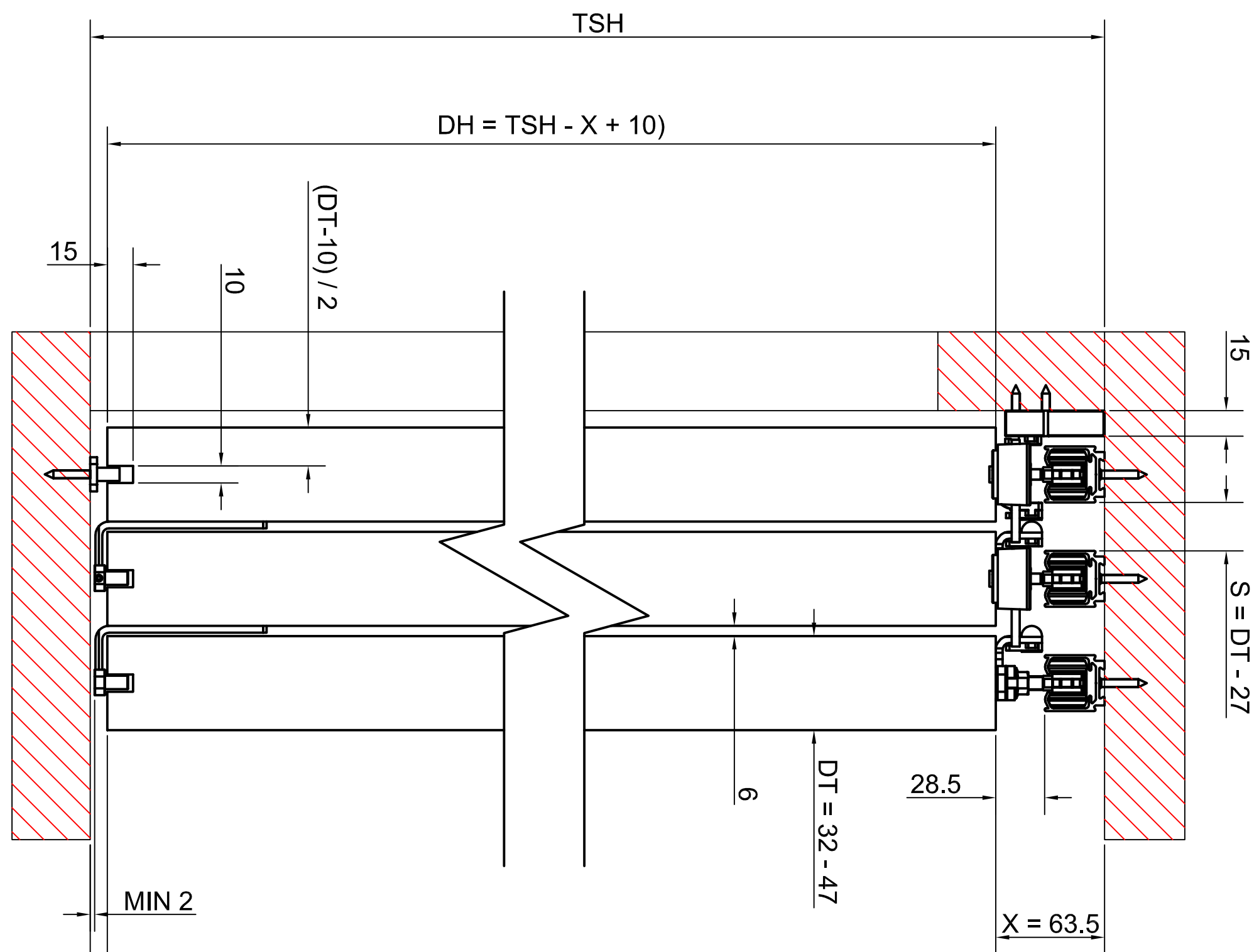


END VIEW



KEY:

- DT = DOOR THICKNESS
- DH = DOOR HEIGHT
- X = PCH RECOMMENDED TOP CLEARANCE (63.5MM)
- TSH = TRACK SET HEIGHT
- S = GAP REQUIRED BETWEEN TRACKS

NOTES:

1. DRAWING IS FOR REFERENCE AND SUBJECT TO CHANGE WITHOUT NOTICE.
2. APPLICATION IS FOR TIMBER DOORS WEIGHT MAX 80Kg.
3. REFER TO FITTING INSTRUCTIONS FOR ROUTING DETAILS REQUIRED
4. ALL DIMENSIONS ARE IN MILLIMETERS.

Descr	HUSKY TELESCOPIC
PCH-code	3 DOOR TEL80/3
Calc	NTS
Drawn	A3
Revision	A

SHEET 1 OF 2

HENDERSON

www.pchenderson.com

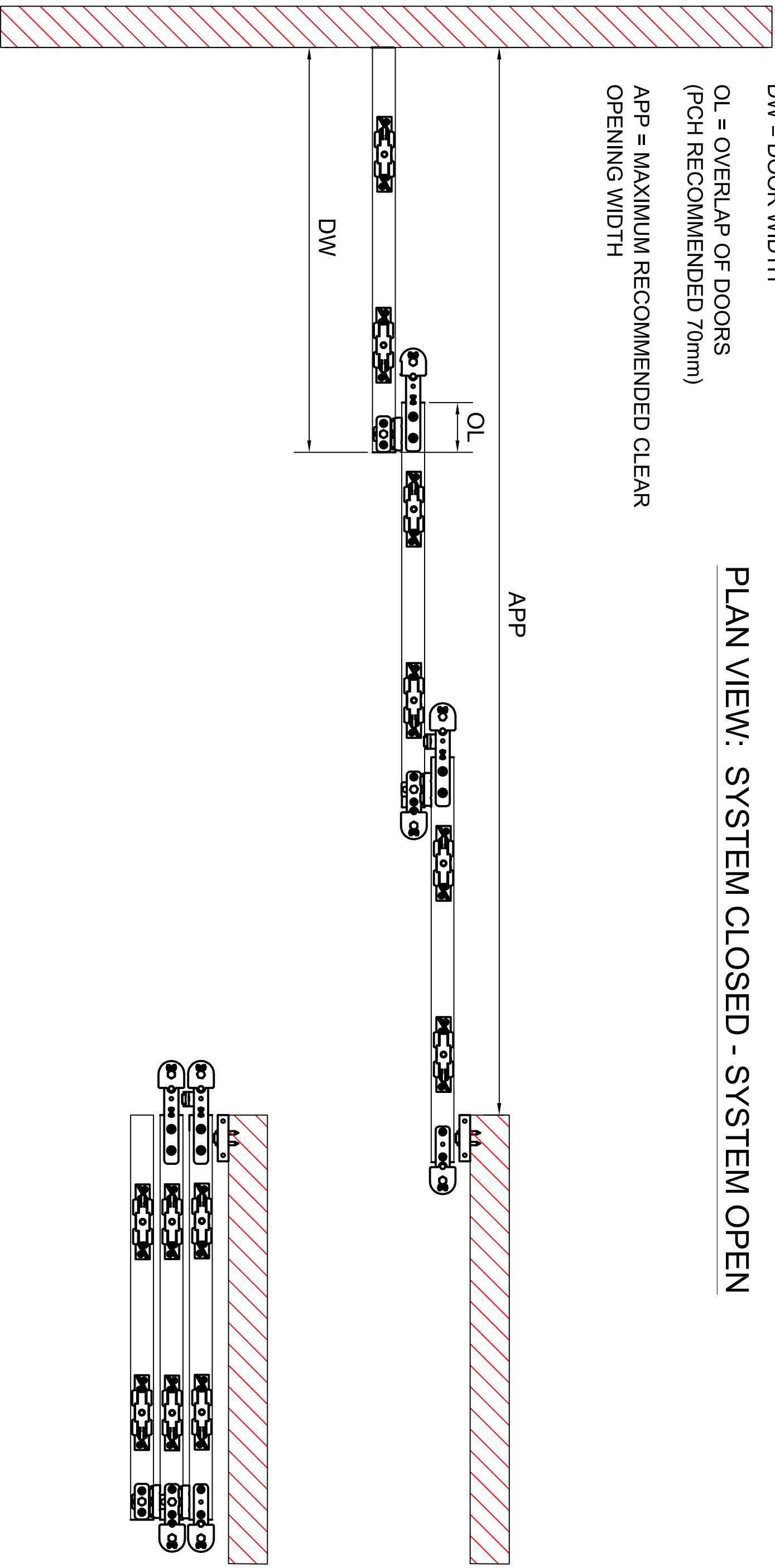
KEY:

DW = DOOR WIDTH

OL = OVERLAP OF DOORS
(PCH RECOMMENDED 70mm)

APP = MAXIMUM RECOMMENDED CLEAR
OPENING WIDTH

PLAN VIEW: SYSTEM CLOSED - SYSTEM OPEN



**SYSTEM
OPEN**

**SYSTEM
CLOSED**

CALCULATIONS:

$$APP = (3 \times DW) - (3 \times OL)$$

$$PCH \text{ RECOMMEND } OL = 70MM$$

$$\Rightarrow APP = 3 \times DW - 210$$

OR

$$DW = (APP + 210) / 3$$

NOTES:

1. DRAWING IS FOR REFERENCE AND SUBJECT TO CHANGE WITHOUT NOTICE.
2. TRACK AND BELT REMOVED FOR CLARITY
3. APPLICATION IS FOR TIMBER DOORS WEIGHT MAX 80kg.
4. ALL DIMENSIONS ARE IN MILLIMETERS.

Descr	HUSKY TELESCOPIC
PCH-code	3 DOOR
CalcCode	TEL80/3
DrawIng-size	NTS
Revision	A3
	A

HENDERSON

www.pchenderson.com

SHEET 2 OF 2