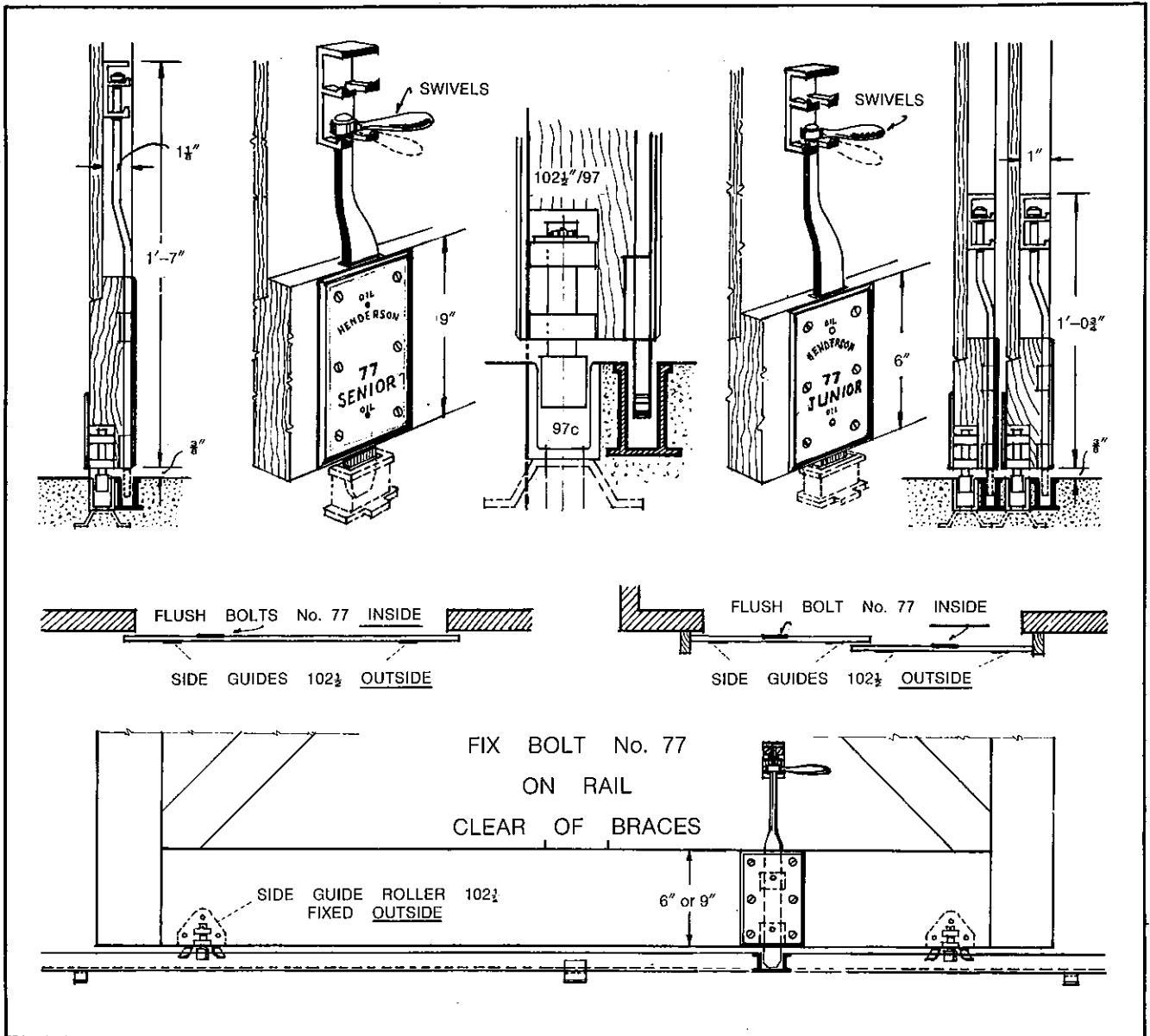


FLUSH BOLTS No. 77 FIXING DETAILS

Junior size 77J for doors from 1 3/8 to 1 7/8 in. thickness with 6 in. wide bottom rails.

Senior size 77S for doors from 1 7/8 to 2 3/8 in. thickness with 9 in. wide bottom rails.



POINTS TO OBSERVE

Bolts No. 77 are designed for framed doors filled in with G and T boards as shown above. They are not suitable for flush doors. The flat bolt shoot does not swivel, having an up and down movement only. The handle alone swivels. Suitable sockets for concrete are provided.

Bolts No. 77 fix on the bottom rail, never on door stiles. If rails are wider or narrower than 9 in. and 6 in. respectively mortising out for the shoot or packing out behind the plate will adjust matters.

They should be used in conjunction with Patented Side Guide Rollers No. 102 1/2, and cannot be used with under Guide Rollers that is when the bottom guide channel is central under the door or doors.

HENDERSON

DURHAM ROAD, BOWBURN, CO. DURHAM, DH6 5NG ENGLAND

TEL: 44(0)191 3770701 FAX: 44(0)191 3770755

e-mail: international@pchenderson.com

www.pchenderson.com