

# Securefold Ultra

Featuring R-Loc

LVL 1: October 2016

## FOR TIMBER, FOLDING, EXTERIOR DOORS UP TO 100KG EACH

Securefold Ultra possesses all of the features and benefits of the Securefold system but features a further enhancement of an additional level of security. The system incorporates a number of enhanced components to make it one of the most secure bi-folding hardware systems on the market and has been tested to both PAS 24 (UK) and BS EN 1657 RC2 (European) security standards.

Designed and manufactured in the UK, this unique and robust system has been extensively tested for weather and corrosion resistance. It is made from marine grade stainless steel and is available in four finishes. Securefold Ultra also includes the addition of R-Loc - a clever ratchet system that enables installers to easily raise or lower a door. Increasing the door height is a single handed operation and R-Loc allows the installer to walk away in confidence that the system is locked in place.

### Applications

- Residential and commercial timber exterior folding applications
- Extremely weather and corrosion resistant with all components being made from 316 stainless steel, anodised aluminium and polymers
- End folding timber doors folding to one or both sides
- Standard folding configuration features doors folding outward. Inward folding doors can be used where the doors are not directly exposed to the weather

### Key Product Features

- Three points of locking on every external door seam
- A unique interlocking anti-tamper hinge, making it difficult to force out of position or dismantle
- Multipoint lock with anti-snap and anti-bump cylinder to withstand attack
- Tested to PAS 24 and BS EN 1627 RC2 and security standards
- Can be combined with Yale's YS170 multipoint lock, which holds the coveted Secured by Design and Insurance Approved accreditation, for further enhanced security standards
- Key free options are also available to add extra security and the 'wow' factor to your project

### Door Specification

For individual door leaves:

Maximum leaf height	3300mm
Maximum leaf weight	100kg
Maximum leaf width	1000mm
Maximum leaf thickness	35-68mm

\*For thick and/or narrow width doors please contact P C Henderson Technical Department

\*\*For doors between 35 - 44mm an alternative to the Securefold flushbolt is required

### Gear Specification

Track	250
Material	Anodised Aluminium (anodising 25 microns)
Standard Lengths	2000, 2500, 3000, 3500, 4000, 5000 and 6000mm
Hanger/Hinge/Guide Sets	SFU1 - Pivot Set SFU2R - End Hanger Set Right Hand* SFU2L - End Hanger Set Left Hand* SF3 - Hinge Set with Handle SFU4 - Intermediate Hanger Set SF7 - Hinge Set Offset Outward Opening SF8 - Rebated End Hanger** SFU9 - Pivot Hinge required for Ultra security SF10 - Face Fix Handle (Optional)
Channel	94P - Polypropylene Guide Channel 94SC - Anodised Aluminium Support Channel
Seals	Threshold and channel lengths correspond with standard track length AQ63B - Door Perimeter Seal Brown AQ21B - Frame Perimeter Seal Brown BS10 - Track Seal Black
Accessories	Lockable and non-lockable flush bolts available in 190, 450 & 600mm versions in gold, satin, chrome or black finish

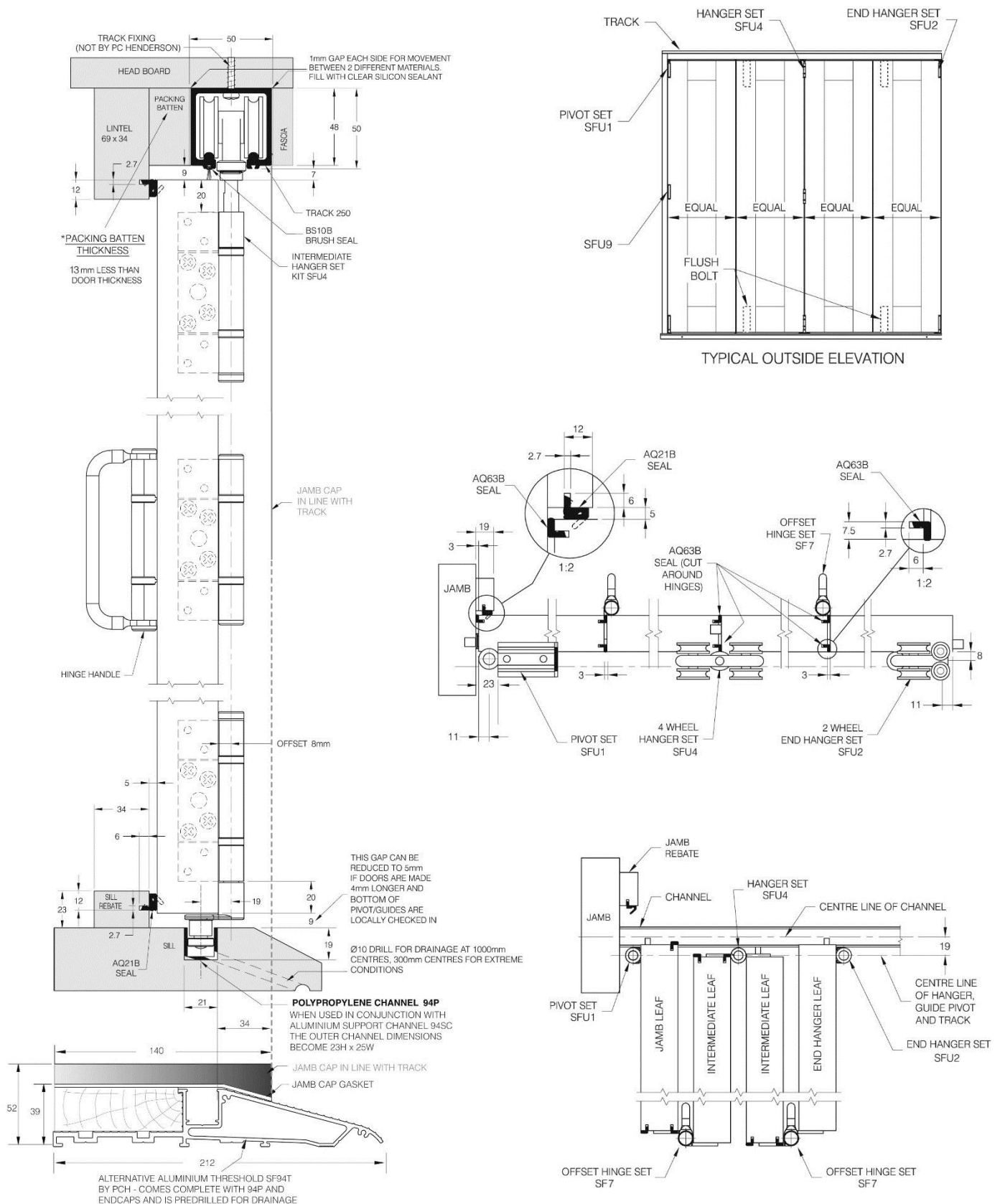
\*End hanger/guides are handed inside looking out

\*\* End hanger set for a pair of rebated meeting door



# Securefold Ultra

Featuring R-Loc



**HENDERSON**

P C Henderson Ltd, Durham Road, Bowburn, Co. Durham, DH6 5NG  
 T: +44 (0) 191 377 0701 | E: sales@pchenderson.com | W: www.pchenderson.com